

AUSTRALASIAN HFG STANDARD COMPONENTS

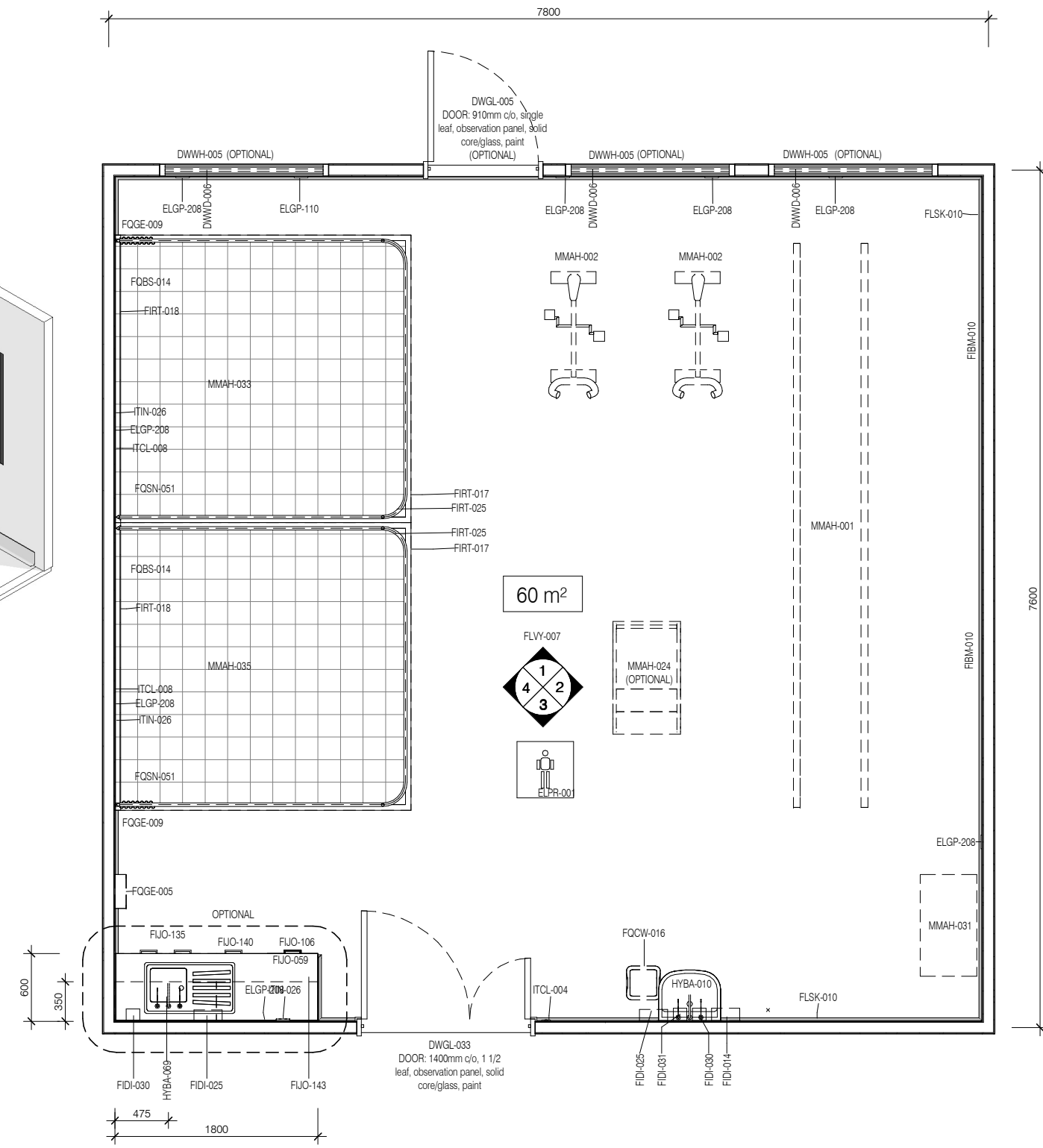
Room Layout Sheet

RLS Room Code: **GYAH-60**

1:50 2.5m 2 1.5 1 0.5 0

Room Name:

GYMNASIUM, 60m²



PLAN

CODE	DESCRIPTION
CLGE-001	CEILING: plasterboard, bulkhead, paint
DWPR-006	DOOR PROTECTION: protection plate, to 900 AFFL, PVC, prefinished
DWPR-010	DOOR PROTECTION: to door frame, PVC, prefinished
DWWD-006	BLIND: venetian
DWWH-005	WINDOW
ELBO-015	SWITCH: light, single
ELGP-110	GPO: single, wall mounted, cleaner
ELGP-208	GPO: double, wall mounted
ELPR-001	BODY PROTECTED ELECTRICAL AREA
FIBM-010	MIRROR: fixed, safety glass, full length
FIDI-014	DISPENSER: disposable glove
FIDI-025	DISPENSER: paper/hand towel
FIDI-030	DISPENSER: soap
FIDI-031	DISPENSER: soap antiseptic
FUJO-059	BENCH TOP: 600D, joinery under, laminate finish
FUJO-106	CUPBOARD: drawer unit, 4 equal
FUJO-135	CUPBOARD: underbench, double door, adj shelves
FUJO-140	CUPBOARD: underbench, single door, adj shelves
FUJO-143	CUPBOARD: wall mount, double door, adj shelves
FIRT-017	STEEL MESH: framed, ceiling mount
FIRT-018	STEEL MESH: framed, wall mount
FIRT-025	TRACK: curtain, bedscreen, U shaped

CODE	DESCRIPTION
FLSK-010	SKIRTING: vinyl, floor vinyl coved, 150H, prefinished
FLVY-007	FLOOR FINISH: vinyl, seamless, coved, standard slip resistant
FQBS-014	CHAIR: client
FQCW-016	BIN: waste, general, 20L
FQGE-005	CLOCK: analogue, battery operated
FQGE-009	CURTAIN: bed screen
FQSN-051	LOCKER: 2 drawers, open under, lockable, mobile
HYBA-010	BASIN: handwash, Type B
HYBA-069	SINK: single, with drainer, 930mmL
HYTP-037	TAPWARE: mixer, elbow levers
ITCL-004	BUTTON: nurse call, emergency
ITCL-008	BUTTON: nurse call, staff assist
ITIN-026	OUTLET: data, double RJ45, wall mounted
ITNE-053	TELEPHONE: handset, wall mount, handsfree
MMAH-001	BAR: parallel
MMAH-002	BICYCLE: exercise
MMAH-024	STAIRS: exercise
MMAH-031	WEIGHTS: pulley, wall mount
MMAH-033	PLINTH: double width
MMAH-035	PLINTH: single width
WLWA-004	WALL FINISH: paint, acrylic, washable
WLWA-007	WALL FINISH: splashback
WLWA-010	WALL FINISH: splashback, vinyl

REV	DESCRIPTION	DATE
3	Coding and naming updated	20.03.2017

FOR GUIDANCE

SCALE	RLS Room Code	REV
1 : 50 @ A3	GYAH-60	3



AUSTRALASIAN HFG STANDARD COMPONENTS

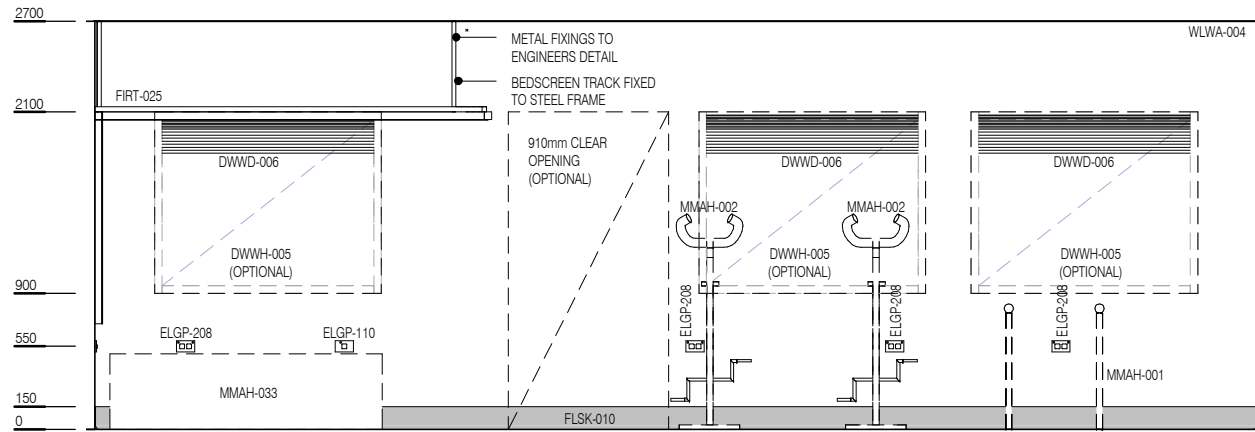
Room Layout Sheet

RLS Room Code: **GYAH-60**

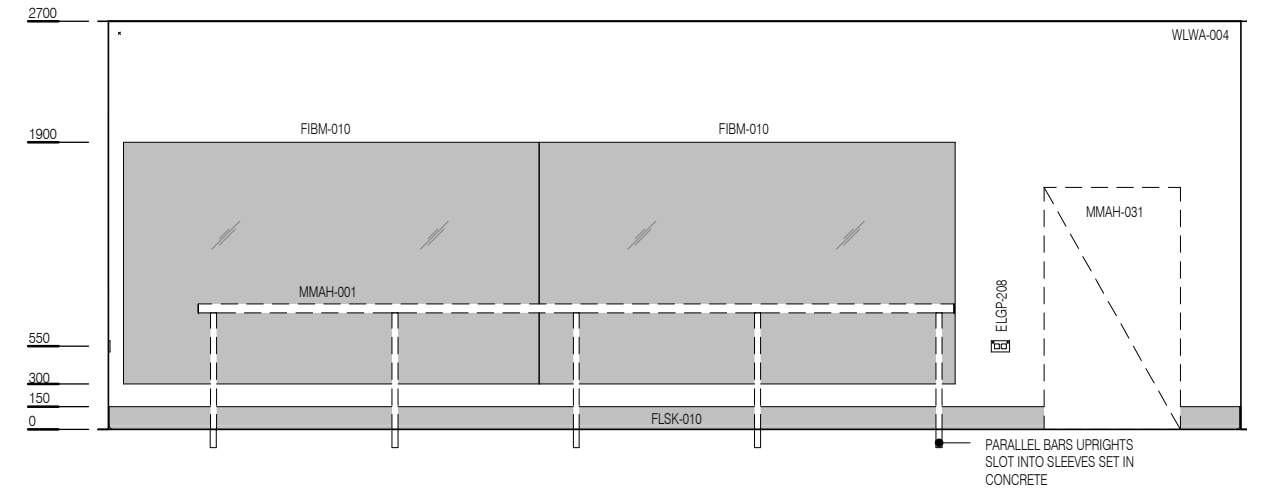
1:50

Room Name:

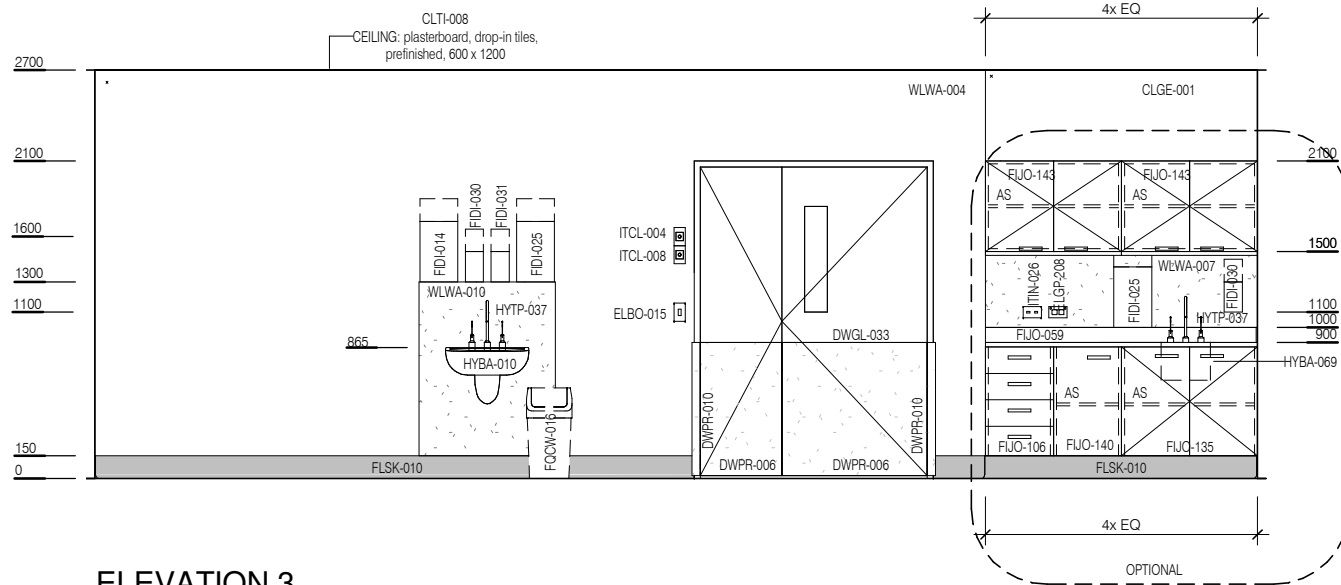
GYMNASIUM, 60m²



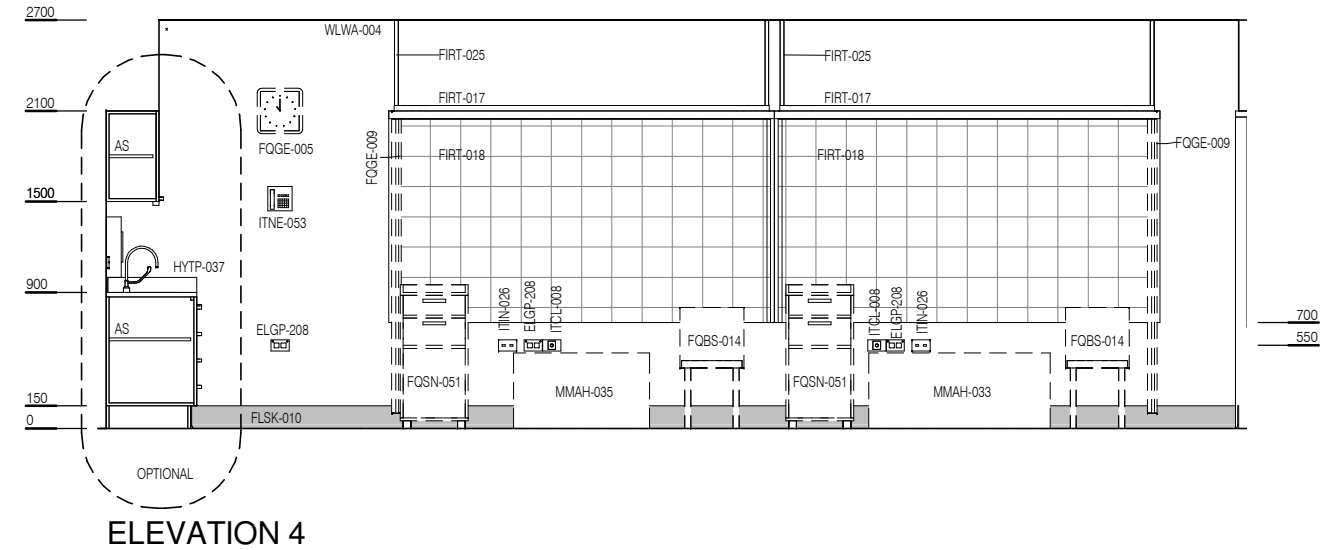
ELEVATION 1



ELEVATION 2



ELEVATION 3



ELEVATION 4

CODE	DESCRIPTION
CLGE-001	CEILING: plasterboard, bulkhead, paint
DWPR-006	DOOR PROTECTION: protection plate, to 900 AFFL, PVC, prefinished
DWPR-010	DOOR PROTECTION: to door frame, PVC, prefinished
DWWD-006	BLIND: venetian
DWWH-005	WINDOW
ELBO-015	SWITCH: light, single
ELGP-110	GPO: single, wall mounted, cleaner
ELGP-208	GPO: double, wall mounted
ELPR-001	BODY PROTECTED ELECTRICAL AREA
FIBM-010	MIRROR: fixed, safety glass, full length
FIDI-014	DISPENSER: disposable glove
FIDI-025	DISPENSER: paper/hand towel
FIDI-030	DISPENSER: soap
FIDI-031	DISPENSER: soap antiseptic
FUJO-059	BENCH TOP: 600D, joinery under, laminate finish
FUJO-106	CUPBOARD: drawer unit, 4 equal
FUJO-135	CUPBOARD: underbench, double door, adj shelves
FUJO-140	CUPBOARD: underbench, single door, adj shelves
FUJO-143	CUPBOARD: wall mount, double door, adj shelves
FIRT-017	STEEL MESH: framed, ceiling mount
FIRT-018	STEEL MESH: framed, wall mount
FIRT-025	TRACK: curtain, bedscreen, U shaped

CODE	DESCRIPTION
FLSK-010	SKIRTING: vinyl, floor vinyl coved, 150H, prefinished
FLVY-007	FLOOR FINISH: vinyl, seamless, coved, standard slip resistant
FQBS-014	CHAIR: client
FQCW-016	BIN: waste, general, 20L
FQGE-005	CLOCK: analogue, battery operated
FQGE-009	CURTAIN: bed screen
FQSN-051	LOCKER: 2 drawers, open under, lockable, mobile
HYBA-010	BASIN: handwash, Type B
HYBA-069	SINK: single, with drainer, 930mmL
HYTP-037	TAPWARE: mixer, elbow levers
ITCL-004	BUTTON: nurse call, emergency
ITCL-008	BUTTON: nurse call, staff assist
ITIN-026	OUTLET: data, double RJ45, wall mounted
ITNE-053	TELEPHONE: handset, wall mount, handsfree
MMAH-001	BAR: parallel
MMAH-002	BICYCLE: exercise
MMAH-024	STAIRS: exercise
MMAH-031	WEIGHTS: pulley, wall mount
MMAH-033	PLINTH: double width
MMAH-035	PLINTH: single width
WLWA-004	WALL FINISH: paint, acrylic, washable
WLWA-007	WALL FINISH: splashback
WLWA-010	WALL FINISH: splashback, vinyl

REV	DESCRIPTION	DATE
3	Coding and naming updated	20.03.2017

FOR GUIDANCE

SCALE	RLS Room Code	REV
1 : 50 @ A3	GYAH-60	3

