

# AUSTRALASIAN HFG STANDARD COMPONENTS

Room Layout Sheet

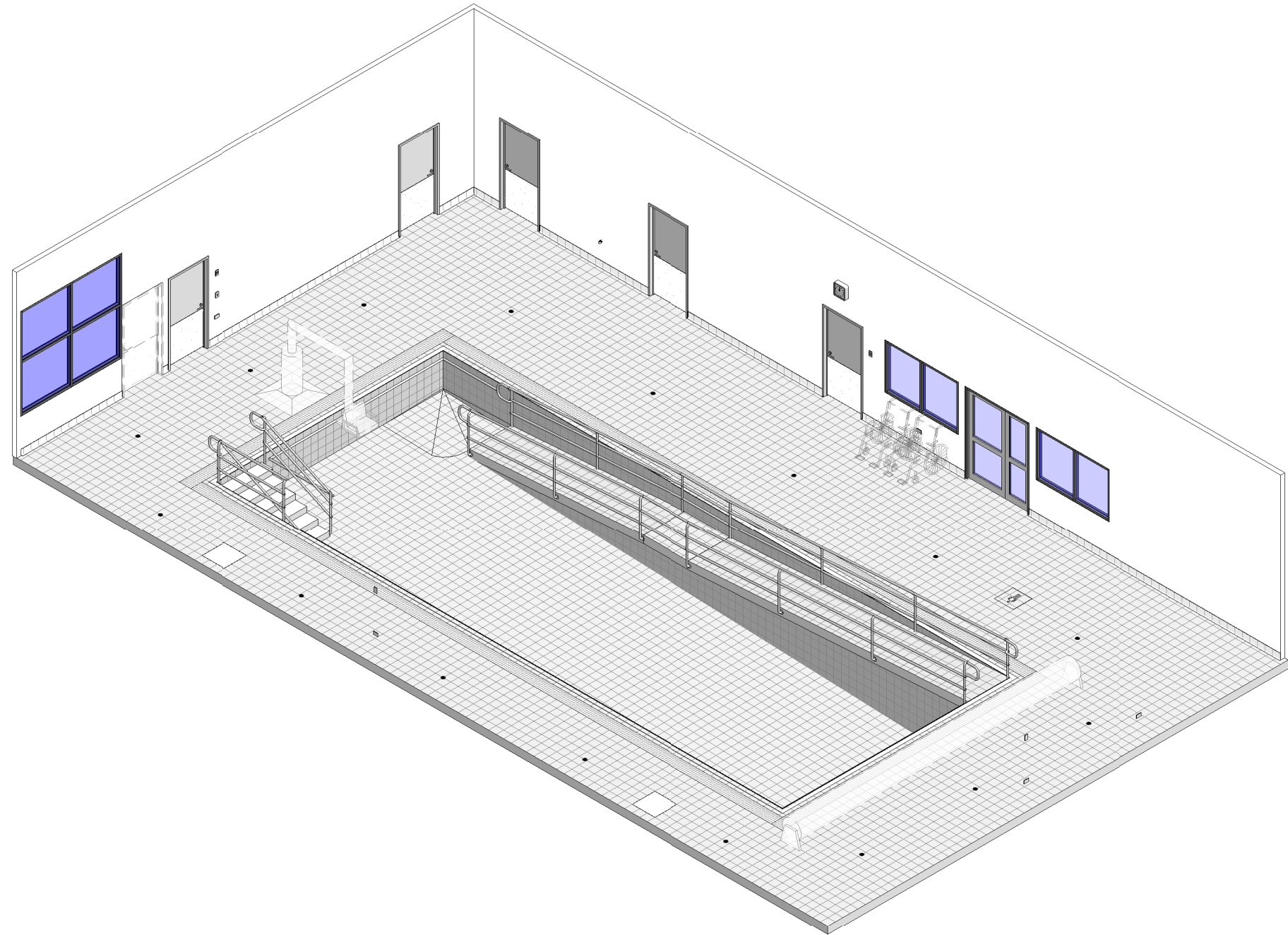
RLS Room Code: **HYDP**

Room Name:

1:100 5m 4 3 2 1 0

**HYDROTHERAPY POOL**

CODE	DESCRIPTION
DWOB-007	OBSERVATION: internal window, alum/safety glass, powdercoat/paint
DWPR-005	DOOR PROTECTION: protection plate to 900 AFFL
DWWH-005	WINDOW
ELBO-015	SWITCH: light, single
ELGP-106	GPO: single, special, for equipment
ELGP-113	GPO: single, wall mounted, waterproof, RCD protected
ELPR-001	BODY PROTECTED ELECTRICAL AREA
FLGE-010	FLOOR FINISH: tiles, ceramic, non-slip
FLSK-004	SKIRTING: tiles, coved, to match floor tiles
FQGE-005	CLOCK: analogue, battery operated
HYDR-004	DRAIN: floor waste
HYTP-008	OUTLET: cold water
ITCL-004	BUTTON: nurse call, emergency
MMAH-017	HOIST: pool, hydraulic
MMAH-032	BLANKET: pool, auto-operated
MMBE-045	WHEELCHAIR
WLWA-011	WALL FINISH: tiles, ceramic, glazed



# AUSTRALASIAN HFG STANDARD COMPONENTS

Room Layout Sheet

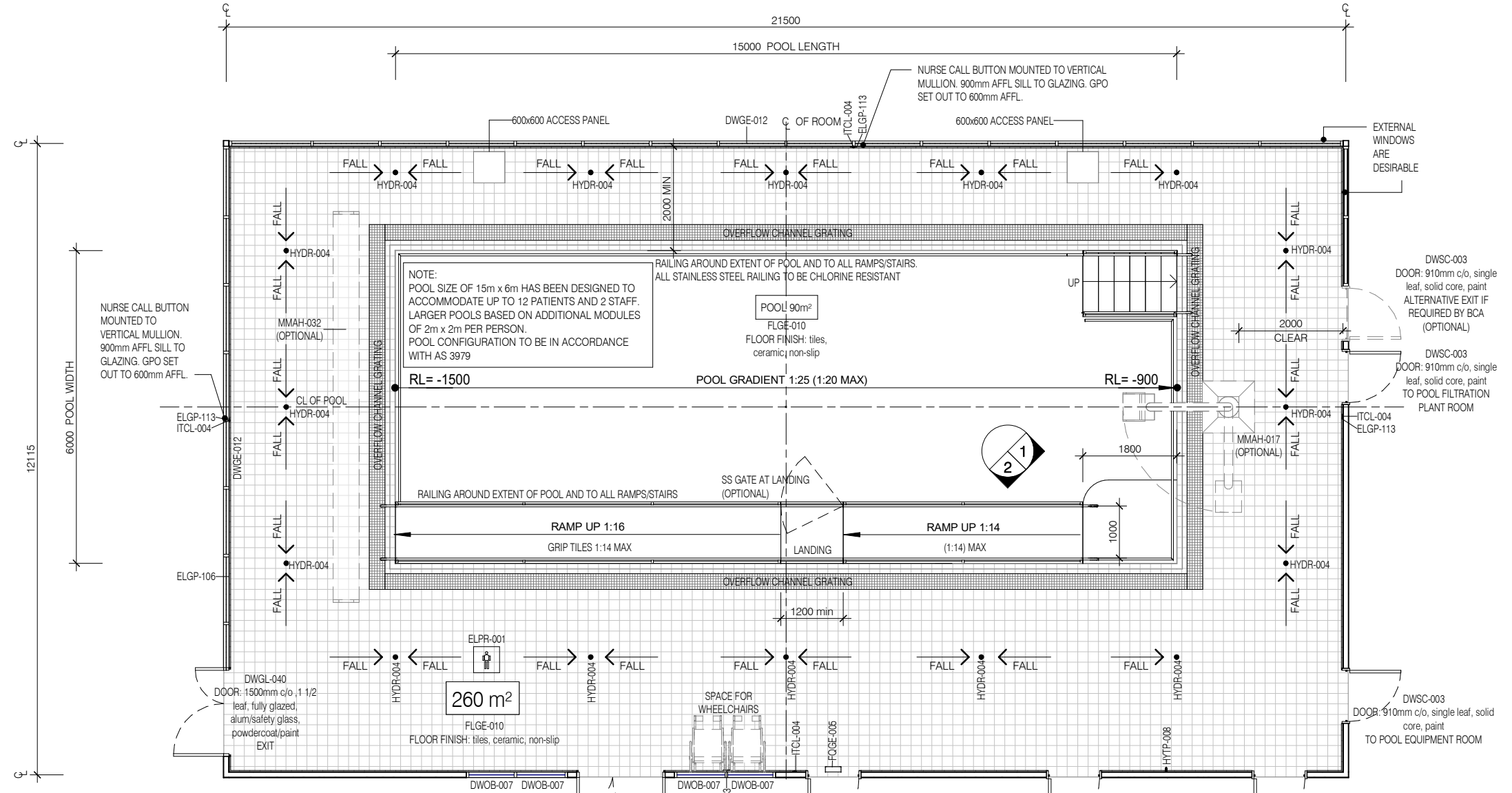
RLS Room Code: **HYDP**

1:100 5m 4 3 2 1 0

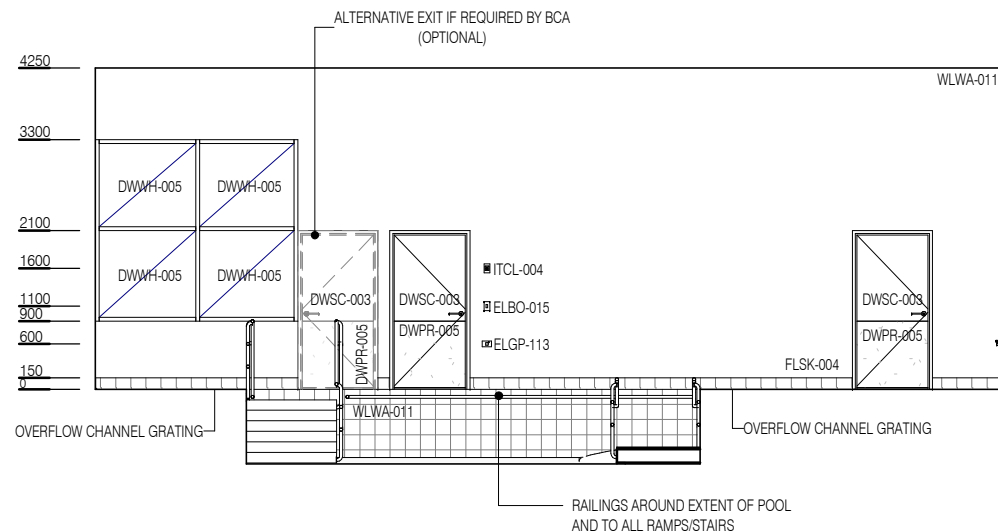
Room Name:

**HYDROTHERAPY POOL**

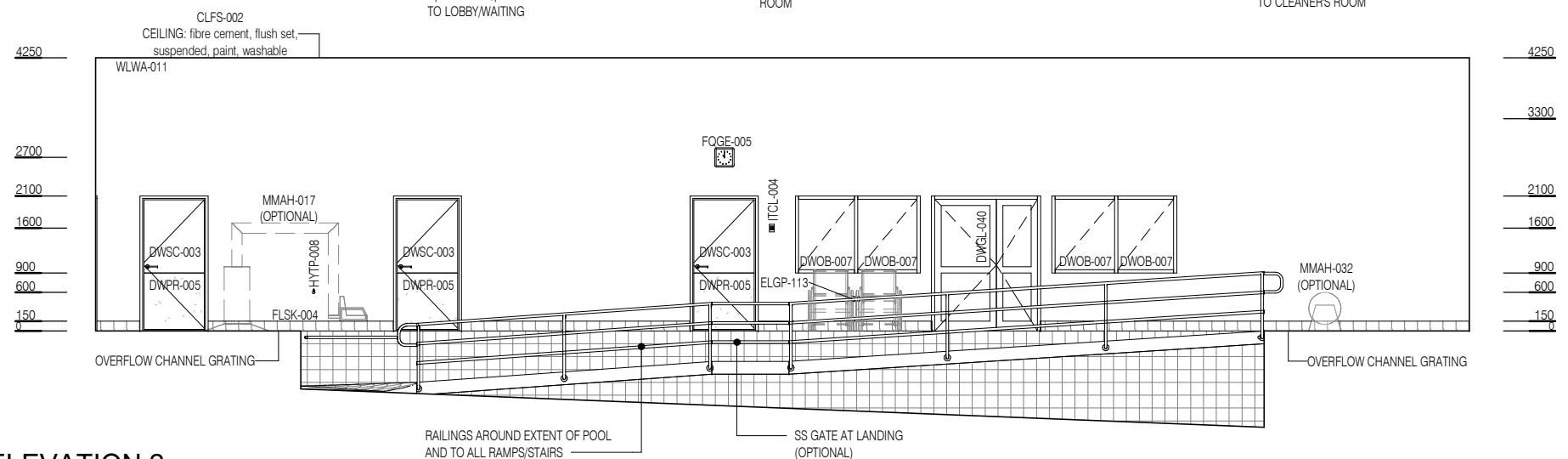
CODE	DESCRIPTION
DWOB-007	OBSERVATION: internal window, alum/safety glass, powdercoat/paint
DWPR-005	DOOR PROTECTION: protection plate to 900 AFFL
DWWH-005	WINDOW
ELBO-015	SWITCH: light, single
ELGP-106	GPO: single, special, for equipment
ELGP-113	GPO: single, wall mounted, waterproof, RCD protected
ELPR-001	BODY PROTECTED ELECTRICAL AREA
FLGE-010	FLOOR FINISH: tiles, ceramic, non-slip
FLSK-004	SKIRTING: tiles, coved, to match floor tiles
FOGE-005	CLOCK: analogue, battery operated
HYDR-004	DRAIN: floor waste
HYTP-008	OUTLET: cold water
ITCL-004	BUTTON: nurse call, emergency
MMAH-017	HOIST: pool, hydraulic
MMAH-032	BLANKET: pool, auto-operated
MMBE-045	WHEELCHAIR
WLWA-011	WALL FINISH: tiles, ceramic, glazed



**PLAN**



**ELEVATION 1**



**ELEVATION 2**



REV	DESCRIPTION	DATE
6	General update following ERG review	26.04.2021

**FOR GUIDANCE**

SCALE	RLS Room Code	REV
1 : 100 @ A3	HYDP	6