

AUSTRALASIAN HFG STANDARD COMPONENTS

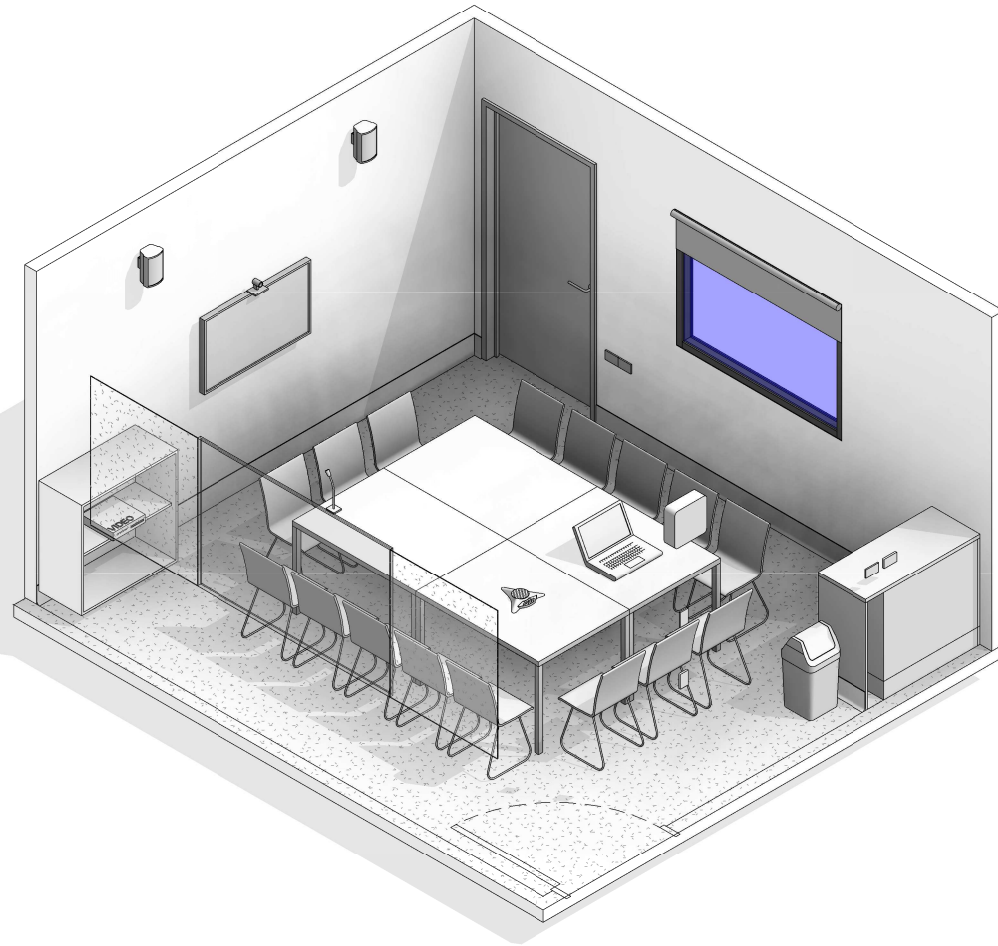
Room Layout Sheet

RLS Room Code: **MEET-L-20**

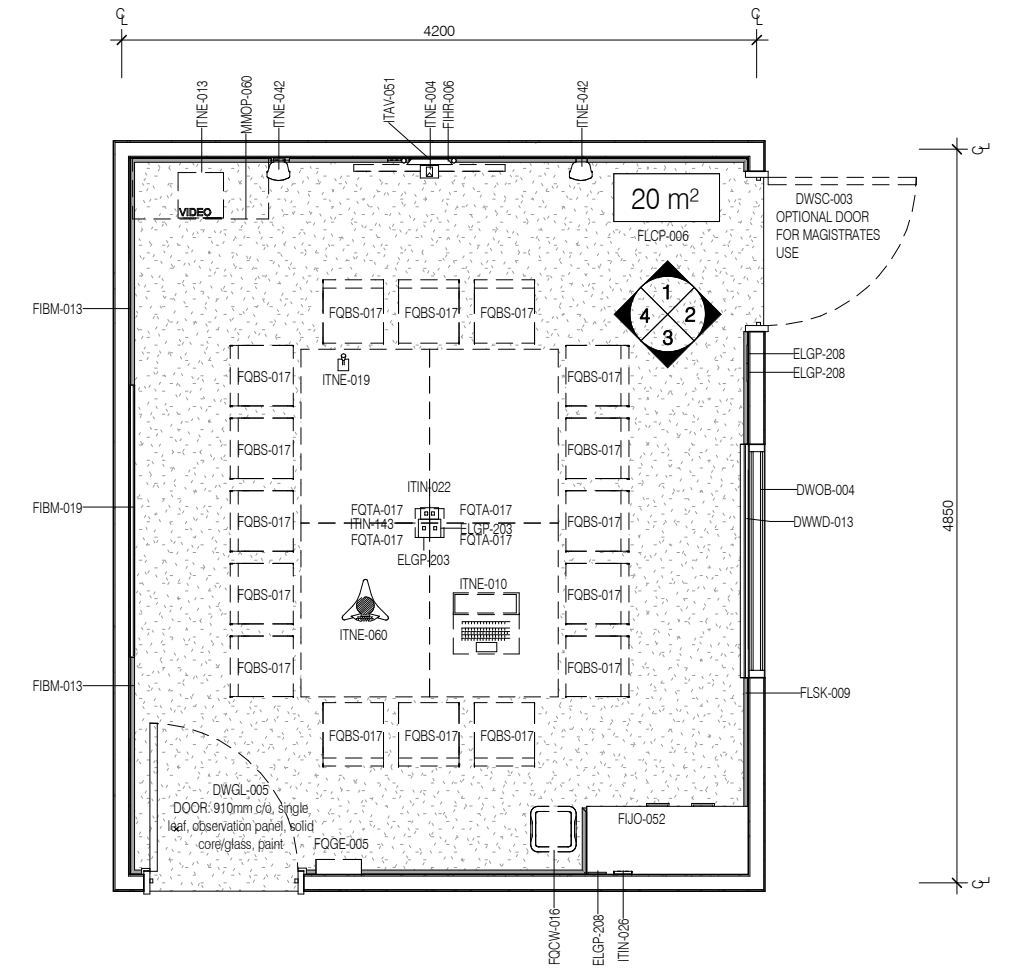
1:50 2.5m 2 1.5 1 0.5 0

Room Name:

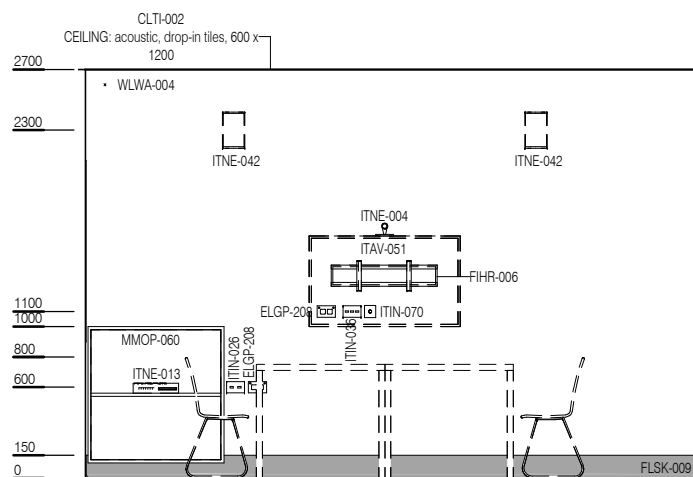
MEETING ROOM, 20m²



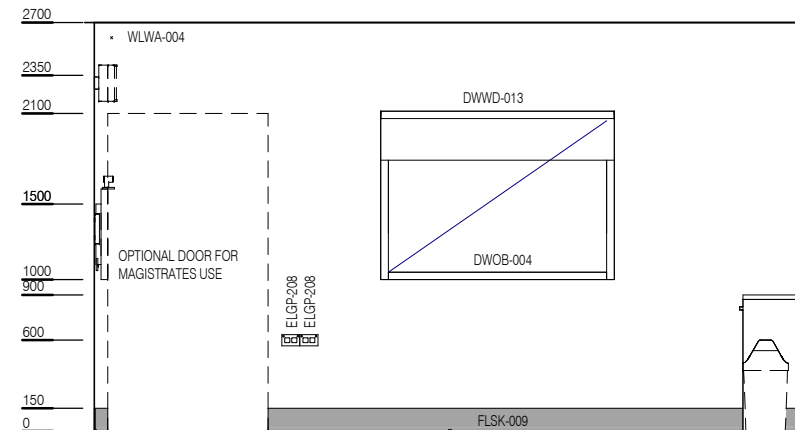
CODE	DESCRIPTION
DWOB-004	OBSERVATION: internal window, alum/glass, internal blinds, powdercoat
DWPR-006	DOOR PROTECTION: protection plate, to 900 AFFL, PVC, prefinished
DWPR-010	DOOR PROTECTION: to door frame, PVC, prefinished
DWWD-013	WINDOW DRESSING: external window
ELBO-015	SWITCH: light, single
ELGP-203	GPO: double, in floorbox
ELGP-208	GPO: double, wall mounted
FIBM-013	NOTICEBOARD: fixed, fabric covered
FIBM-019	WHITEBOARD: fixed, magnetic
FIHR-006	BRACKET: for display screen, wall mounted
FIJO-052	BENCH TOP: 450D, joinery under, laminate finish
FIJO-136	CUPBOARD: underbench, double door, adj shelves, lockable
FLCP-006	FLOOR FINISH: carpet, carpet tiles, 90/10 wool/nylon
FLSK-009	SKIRTING: vinyl, feather edged, 150H, prefinished
FOBS-017	CHAIR: meeting room
FOCW-016	BIN: waste, general, 20L
FOGE-005	CLOCK: analogue, battery operated
FQTA-017	TABLE: rectangular 1200L x 900W, work height
ITAV-051	DISPLAY SCREEN: audio visual
ITCL-004	BUTTON: nurse call, emergency
ITIN-022	OUTLET: data, double RJ45, in floorbox
ITIN-026	OUTLET: data, double RJ45, wall mounted
ITIN-036	OUTLET: data, triple RJ45, wall mounted
ITIN-070	OUTLET: MATV
ITIN-143	FLOORBOX: for power, data, AV, flush mounted
ITNE-004	CAMERA: video conferencing
ITNE-010	COMPUTER: laptop or other mobile device
ITNE-013	CONTROL UNIT: video conferencing
ITNE-019	MICROPHONE: videoconferencing
ITNE-042	SPEAKER: video conferencing, wall mount
ITNE-060	TELEPHONE: teleconferencing module
ITSE-006	BUTTON: duress, fixed
MMOP-060	RACK: AV
WLWA-004	WALL FINISH: paint, acrylic, washable



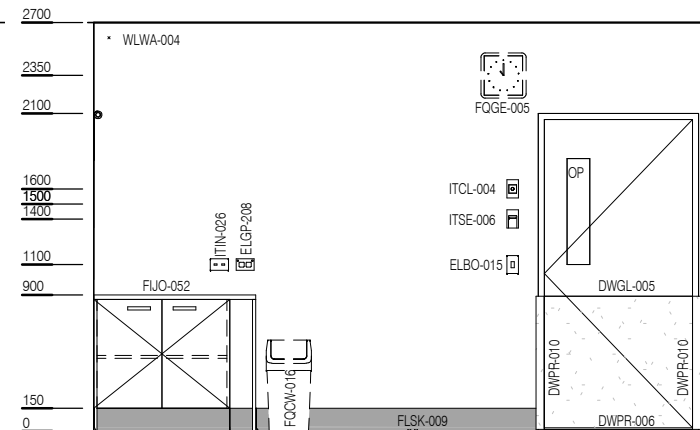
PLAN



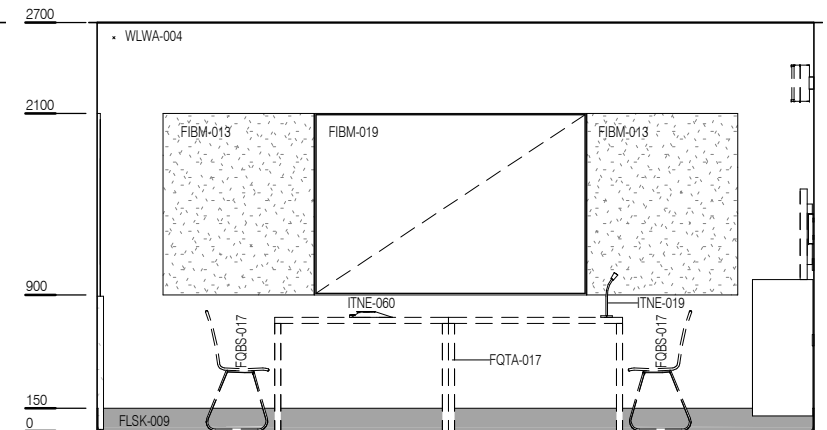
ELEVATION 1



ELEVATION 2



ELEVATION 3



ELEVATION 4



REV	DESCRIPTION	DATE
6	Coding and naming updated	20.03.2017

FOR GUIDANCE

SCALE	RLS Room Code	REV
1 : 50 @ A3	MEET-L-20	6