

AUSTRALASIAN HFG STANDARD COMPONENTS

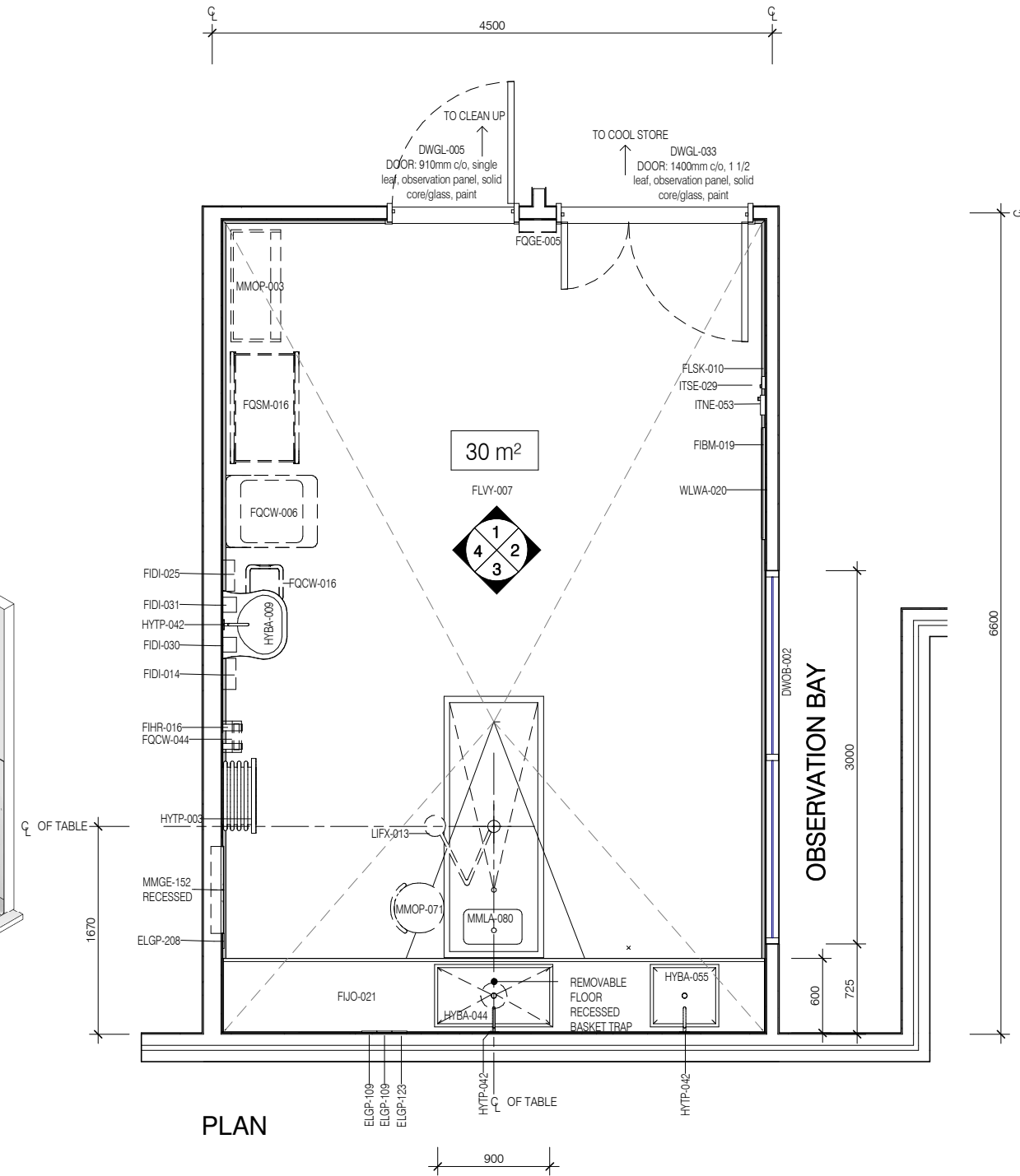
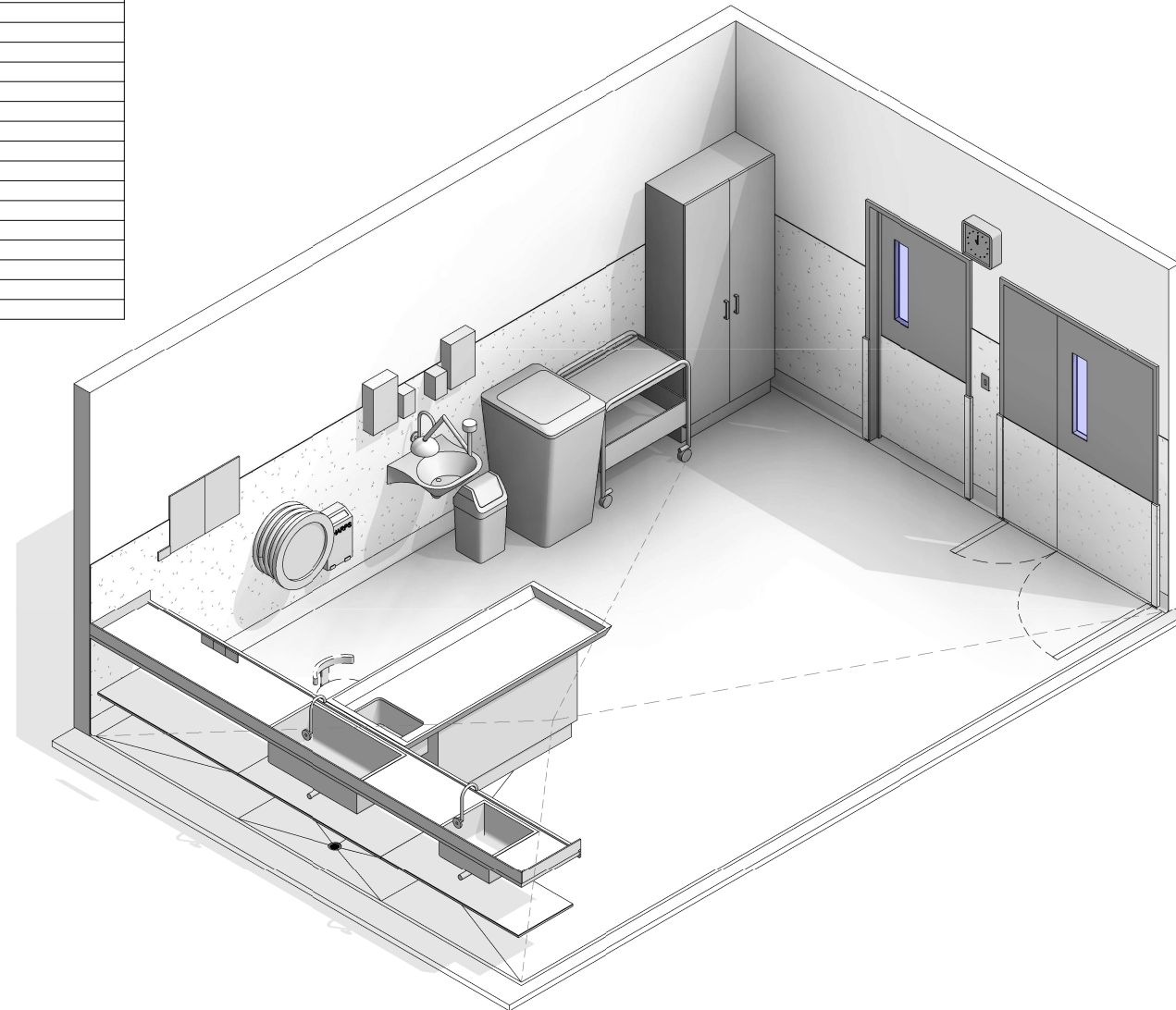
Room Layout Sheet

RLS Room Code: **MOR-AU**

Room Name:

1:50 2.5m 2 1.5 1 0.5 0
MORTUARY - AUTOPSY ROOM

CODE	DESCRIPTION
DWOB-002	OBSERVATION: internal window, alum/glass, door height, powdercoat
DWPR-006	DOOR PROTECTION: protection plate, to 900 AFFL, PVC, prefinished
DWPR-010	DOOR PROTECTION: to door frame, PVC, prefinished
ELBO-015	SWITCH: light, single
ELGP-109	GPO: single, wall mounted
ELGP-123	GPO: emergency power, single, wall mounted
ELGP-208	GPO: double, wall mounted
FIBM-019	WHITEBOARD: fixed, magnetic
FIDI-014	DISPENSER: disposable glove
FIDI-025	DISPENSER: paper/hand towel
FIDI-030	DISPENSER: soap
FIDI-031	DISPENSER: soap antiseptic
FIHR-016	BRACKET: for sharps bin
FIJO-021	BENCH: 600D, open under, stainless steel lipped
FIJO-197	SHELF: stainless steel, underbench
FLSK-010	SKIRTING: vinyl, floor vinyl coved, 150H, prefinished
FLVY-007	FLOOR FINISH: vinyl, seamless, coved, standard slip resistant
FQCW-006	BIN: waste, clinical, 240L
FQCW-016	BIN: waste, general, 20L
FQCW-044	BIN: waste, sharps, wall mounted
FQGE-005	CLOCK: analogue, battery operated
FQSM-016	TROLLEY
HYBA-009	BASIN: handwash, Type A, scrub
HYBA-044	SINK: draining
HYBA-055	SINK: single, 500 x 450 x 250D
HYDR-001	DRAIN: special requirements
HYDR-004	DRAIN: floor waste
HYTP-003	HOSE REEL: retractable
HYTP-042	TAPWARE: sensor
ITNE-053	TELEPHONE: handset, wall mount, handsfree
ITSE-029	INTERCOM: audio, wall mount
LIFX-013	LIGHT: procedure, ceiling mounted, small
MMGE-152	VIEWER: X-ray, 2 screen
MMLA-080	TABLE: post mortem
MMOP-003	CABINET: instrument
MMOP-071	STOOL: operating, mobile
WLWA-004	WALL FINISH: paint, acrylic, washable
WLWA-020	WALL FINISH: vinyl, to 1500 AFFL



PLAN



REV	DESCRIPTION	DATE
3	Coding and naming updated	20.03.2017

FOR GUIDANCE

SCALE	RLS Room Code	REV
1 : 50 @ A3	MOR-AU	3

AUSTRALASIAN HFG STANDARD COMPONENTS

Room Layout Sheet

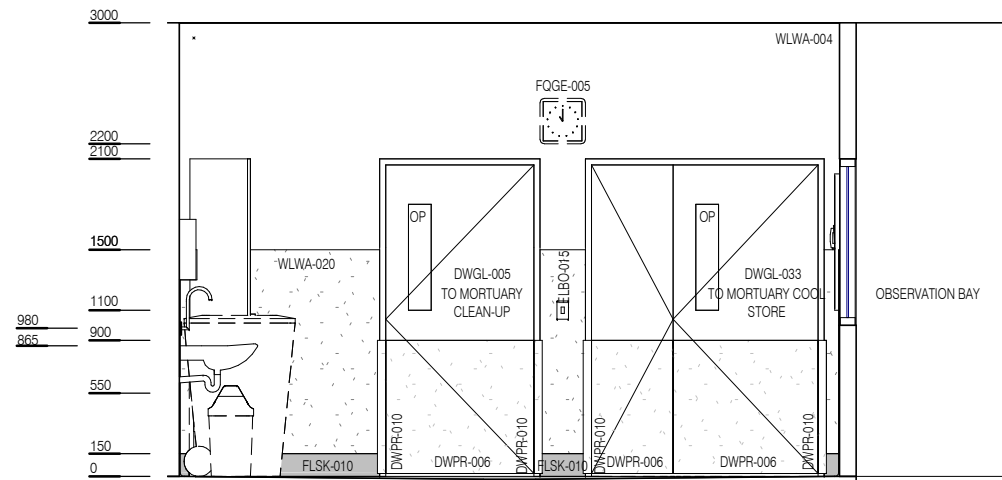
RLS Room Code: **MOR-AU**

1:50 2.5m 2 1.5 1 0.5 0

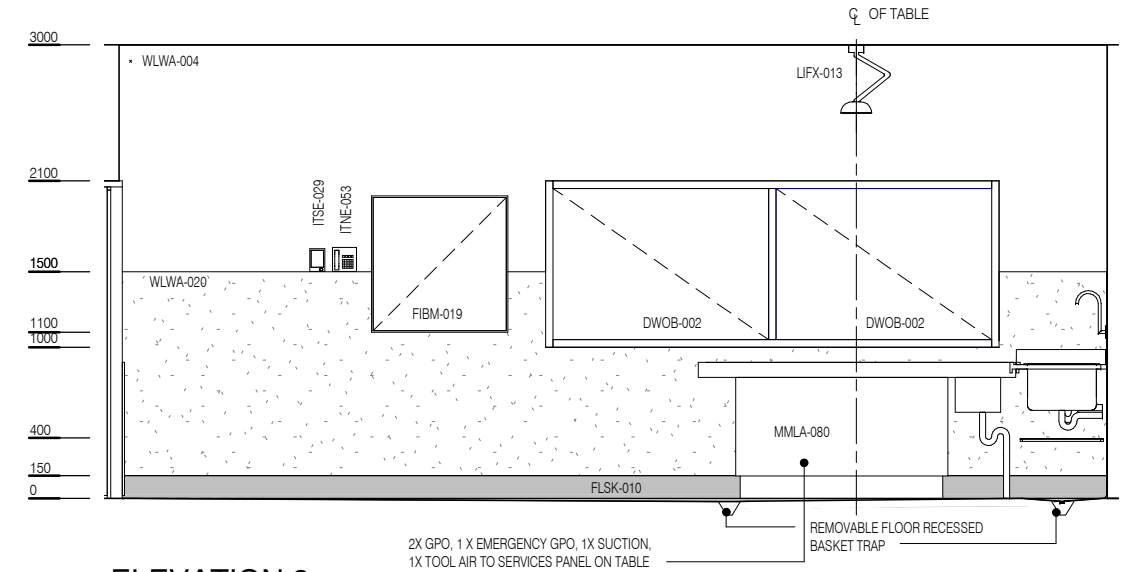
Room Name:

MORTUARY - AUTOPSY ROOM

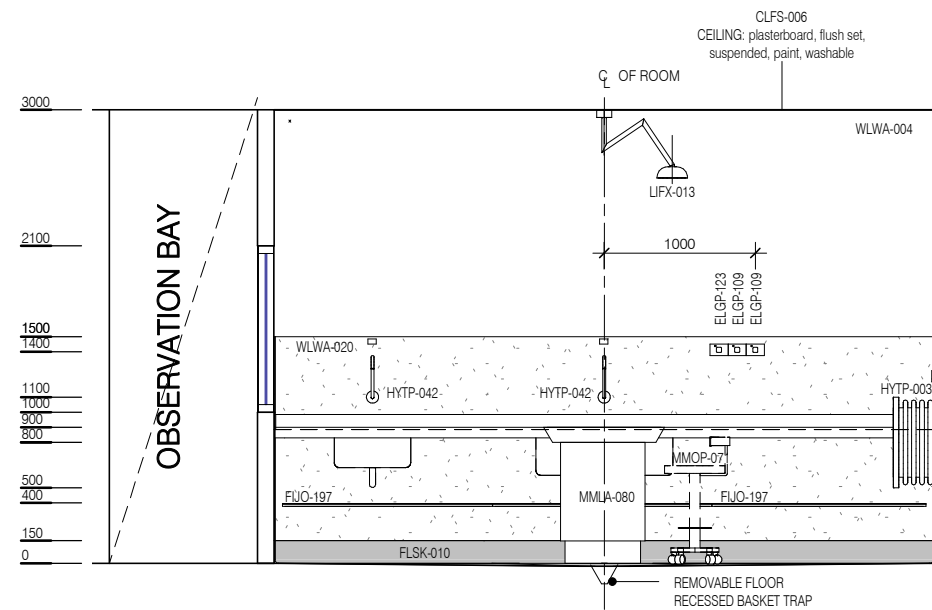
CODE	DESCRIPTION
DWOB-002	OBSERVATION: internal window, alum/glass, door height, powdercoat
DWPR-006	DOOR PROTECTION: protection plate, to 900 AFFL, PVC, prefinished
DWPR-010	DOOR PROTECTION: to door frame, PVC, prefinished
ELBO-015	SWITCH: light, single
ELGP-109	GPO: single, wall mounted
ELGP-123	GPO: emergency power, single, wall mounted
ELGP-208	GPO: double, wall mounted
FIBM-019	WHITEBOARD: fixed, magnetic
FIDI-014	DISPENSER: disposable glove
FIDI-025	DISPENSER: paper/hand towel
FIDI-030	DISPENSER: soap
FIDI-031	DISPENSER: soap antiseptic
FIHR-016	BRACKET: for sharps bin
FUJO-021	BENCH: 600D, open under, stainless steel lipped
FUJO-197	SHELF: stainless steel, underbench
FLSK-010	SKIRTING: vinyl, floor vinyl coved, 150H, prefinished
FLVY-007	FLOOR FINISH: vinyl, seamless, coved, standard slip resistant
FQCW-006	BIN: waste, clinical, 240L
FQCW-016	BIN: waste, general, 20L
FQCW-044	BIN: waste, sharps, wall mounted
FQGE-005	CLOCK: analogue, battery operated
FQSM-016	TROLLEY
HYBA-009	BASIN: handwash, Type A, scrub
HYBA-044	SINK: draining
HYBA-055	SINK: single, 500 x 450 x 250D
HYDR-001	DRAIN: special requirements
HYDR-004	DRAIN: floor waste
HYTP-003	HOSE REEL: retractable
HYTP-042	TAPWARE: sensor
ITNE-053	TELEPHONE: handset, wall mount, handstree
ITSE-029	INTERCOM: audio, wall mount
LIFX-013	LIGHT: procedure, ceiling mounted, small
MMGE-152	VIEWER: X-ray, 2 screen
MMLA-080	TABLE: post mortem
MMOP-003	CABINET: instrument
MMOP-071	STOOL: operating, mobile
WLWA-004	WALL FINISH: paint, acrylic, washable
WLWA-020	WALL FINISH: vinyl, to 1500 AFFL



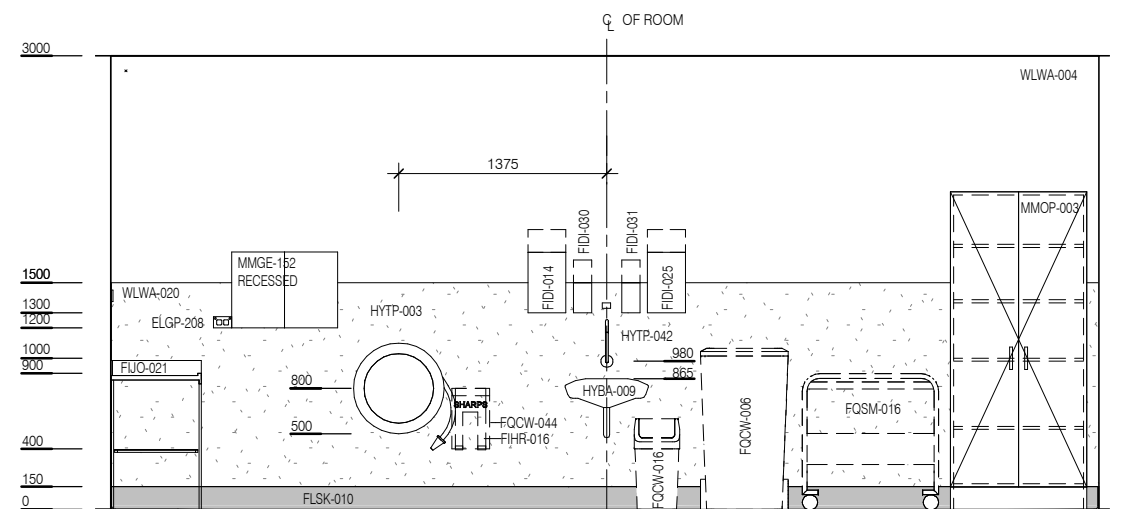
ELEVATION 1



ELEVATION 2



ELEVATION 3



ELEVATION 4



REV	DESCRIPTION	DATE
3	Coding and naming updated	20.03.2017

FOR GUIDANCE

SCALE	RLS Room Code	REV
1 : 50 @ A3	MOR-AU	3