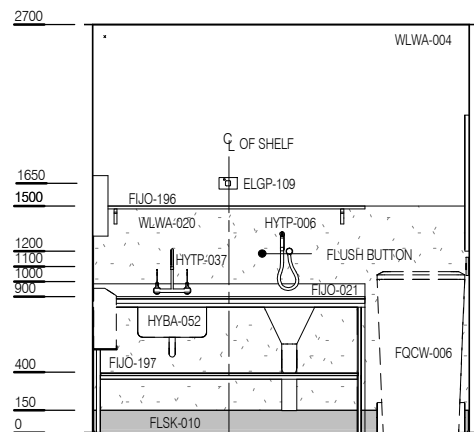
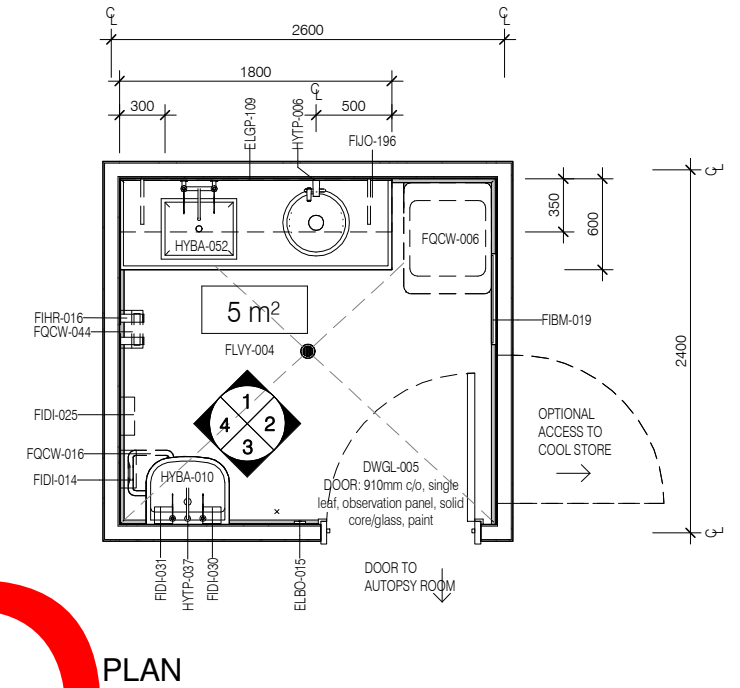
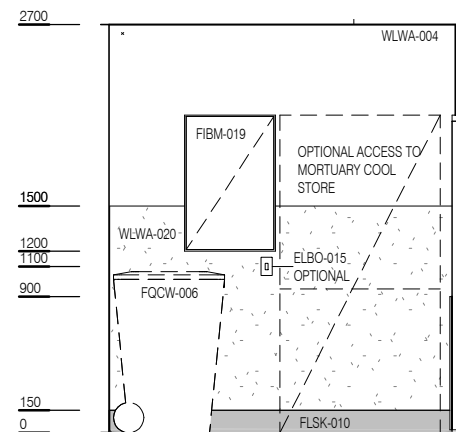


CODE	DESCRIPTION
DWPR-006	DOOR PROTECTION: protection plate, to 900 AFFL, PVC, prefinished
DWPR-010	DOOR PROTECTION: to door frame, PVC, prefinished
ELBO-015	SWITCH: light, single
ELGP-109	GPO: single, wall mounted
FIBM-019	WHITEBOARD: fixed, magnetic
FIDI-014	DISPENSER: disposable glove
FIDI-025	DISPENSER: paper/hand towel
FIDI-030	DISPENSER: soap
FIDI-031	DISPENSER: soap antiseptic
FIHR-016	BRACKET: for sharps bin
FLJO-021	BENCH: 600D, open under, stainless steel lipped
FLJO-100	BENCH LEGS: stainless steel, for bench top
FLJO-196	SHELF: stainless steel, overbench, wall mount
FLJO-197	SHELF: stainless steel, underbench
FLSK-010	SKIRTING: vinyl, floor vinyl coved, 150H, prefinished
FLVY-004	FLOOR FINISH: vinyl, seamless, coved, non-slip, safety
FOCW-006	BIN: waste, clinical, 240L
FOCW-016	BIN: waste, general, 20L
FOCW-044	BIN: waste, sharps, wall mounted
HYBA-010	BASIN: handwash, Type B
HYBA-046	SINK: flushing rim
HYBA-052	SINK: single, 450 x 350 x 250D
HYDR-004	DRAIN: floor waste
HYTP-006	HOSE: spray, pressure control
HYTP-037	HOSE: spray, pressure control
HYTP-037	HOSE: spray, pressure control
HYTP-037	HOSE: spray, pressure control
WLWA-020	WALL FINISH: vinyl, to 1500 AFFL

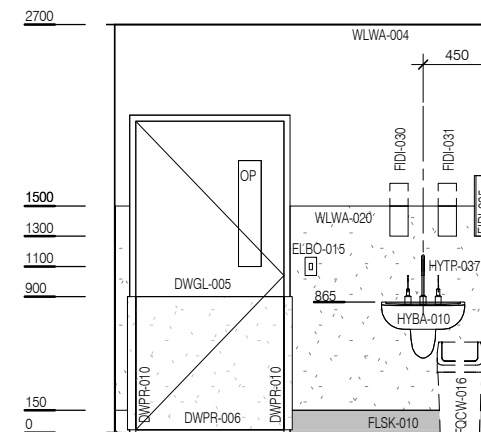
RETIRED



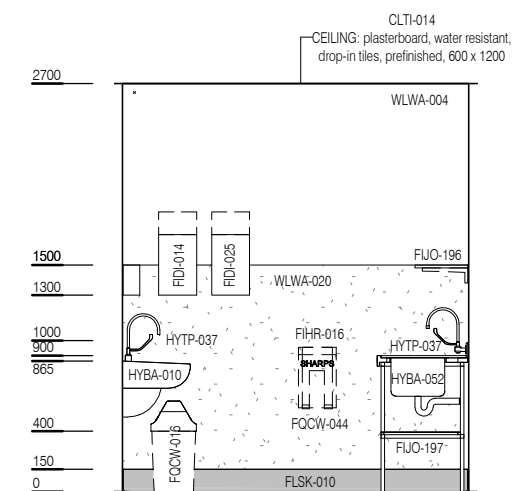
ELEVATION 1



ELEVATION 2



ELEVATION 3



ELEVATION 4