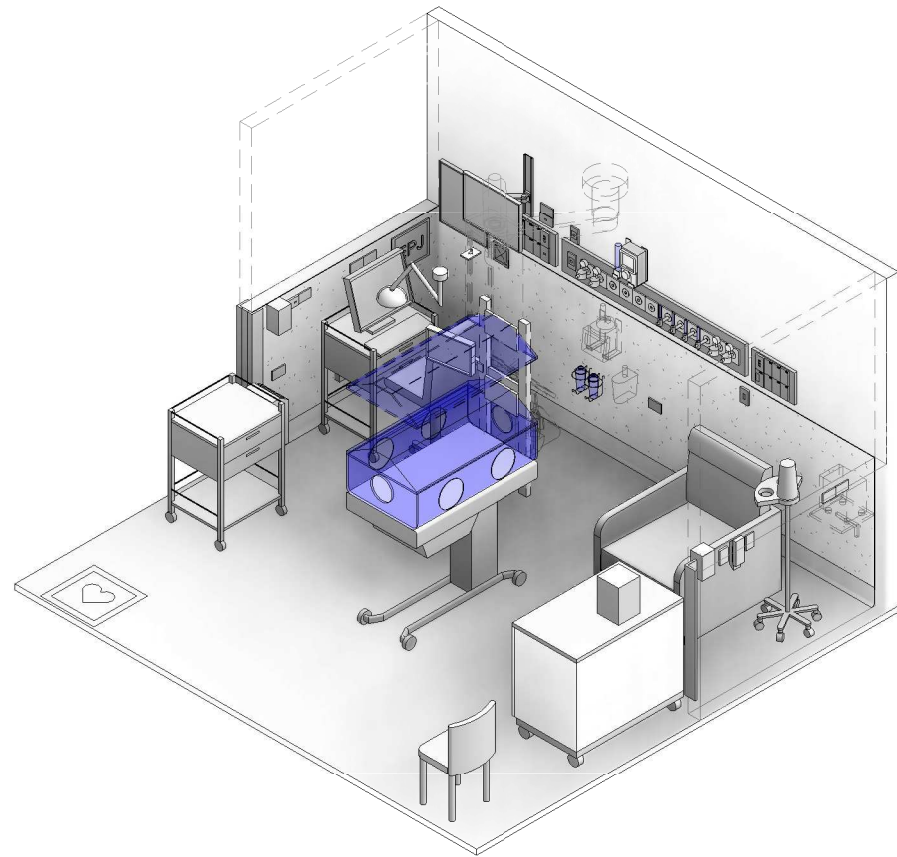
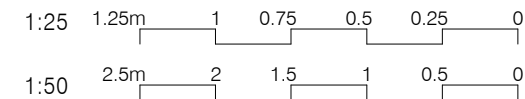


AUSTRALASIAN HFG STANDARD COMPONENTS

Room Layout Sheet

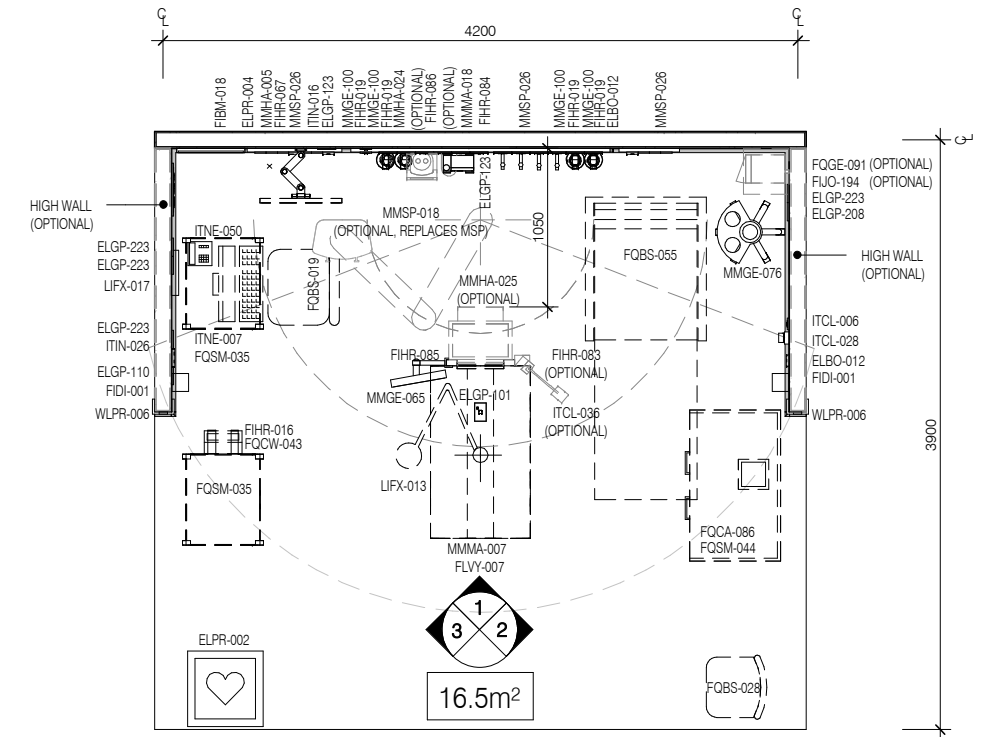
RLS Room Code: NBIC-HD



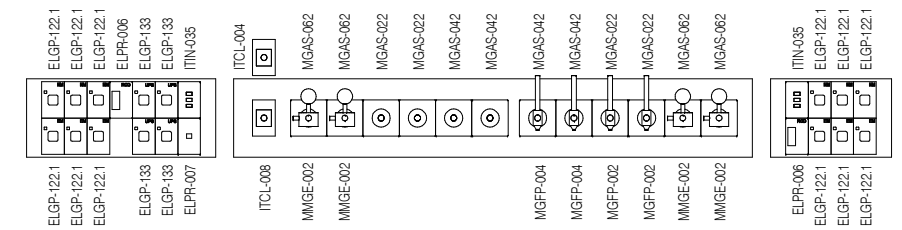
CODE	DESCRIPTION
ELBO-005	EQUIPOTENTIAL JUNCTION BOX
ELBO-012	SWITCH: light, dimmer
ELGP-101	GPO: single, ceiling mounted
ELGP-110	GPO: single, wall mounted, cleaner
ELGP-122.1	GPO: emergency power, single, on services panel (V)
ELGP-123	GPO: emergency power, single, wall mounted
ELGP-133	GPO: UPS, single, on services panel
ELGP-208	GPO: double, wall mounted
ELGP-223	GPO: emergency power, double, wall mounted
ELPR-002	CARDIAC PROTECTED ELECTRICAL AREA
ELPR-004	MONITOR: line isolation
ELPR-006	RCD: residual current device
ELPR-007	UPS: status indicator
FIBM-018	WHITEBOARD: fixed
FIDI-001	DISPENSER: alcohol based hand rub
FIHR-016	BRACKET: for sharps bin
FIHR-019	BRACKET: for suction bottle
FIHR-067	BRACKET: for monitor, wall mounted, articulated, adj height
FIHR-083	BRACKET: for neonatal camera, crib mounted
FIHR-084	BRACKET: for oxygen and air mixer
FIHR-085	BRACKET: for neonatal monitor, crib mounted
FIHR-086	BRACKET: for CPAP ventilator, wall mounted
FUJO-194	SHELF: laminate
FLSK-010	SKIRTING: vinyl, floor vinyl coved, 150H, prefinished
FLVY-007	FLOOR FINISH: vinyl, seamless, coved, standard slip resistant
FOBS-019	CHAIR: office, ergonomic, high
FOBS-028	CHAIR: visitor, clinical areas
FOBS-055	CHAIR: overnight fold out
FOCA-086	WARMER: bottle, mobile
FOCW-043	BIN: waste, sharps, on trolley
FOGE-091	FRIDGE: milk, small
FQSM-035	TROLLEY: small
FQSM-044	CUPBOARD: mobile, double door, adjustable shelves
ITCL-004	BUTTON: nurse call, emergency
ITCL-006	BUTTON: nurse call, patient to staff
ITCL-008	BUTTON: nurse call, staff assist
ITCL-028	HANDSET: nurse call, with patient to staff call button
ITCL-036	CAMERA: neonatal
ITIN-016	OUTLET: data, single RJ45, wall mounted
ITIN-026	OUTLET: data, double RJ45, wall mounted
ITIN-035	OUTLET: data, triple RJ45, on services panel
ITNE-007	COMPUTER: desktop, with display screen
ITNE-050	TELEPHONE: handset, desktop, handstree
LIFX-013	LIGHT: procedure, ceiling mounted, small
LIFX-017	LIGHT: night light
MGAS-022	OUTLET: medical air (MA), on services panel
MGAS-042	OUTLET: oxygen (O2), on services panel
MGAS-062	OUTLET: suction, on services panel
MGFP-002	FLOWMETER: medical air
MGFP-004	FLOWMETER: oxygen
MMGE-002	ADAPTER: suction
MMGE-065	MONITOR: patient, neonatal
MMGE-076	PUMP: breast
MMGE-100	SUCTION BOTTLE
MMHA-005	MONITOR: patient, cardiac
MMHA-024	VENTILATOR: continuous positive airway pressure (CPAP)
MMHA-025	VENTILATOR: neonatal
MMMA-007	INCUBATOR: infant, humidicrib
MMMA-018	MIXER: oxygen and air
MMSP-018	PENDANT: single, wet and dry combination (fixed or adjustable height)
MMSP-026	SERVICES PANEL: wall mounted
WLPR-006	WALL PROTECTION: corner guards
WLWA-004	WALL FINISH: paint, acrylic, washable
WLWA-025	WALL FINISH: vinyl, to 1200 AFFL

Room Name:

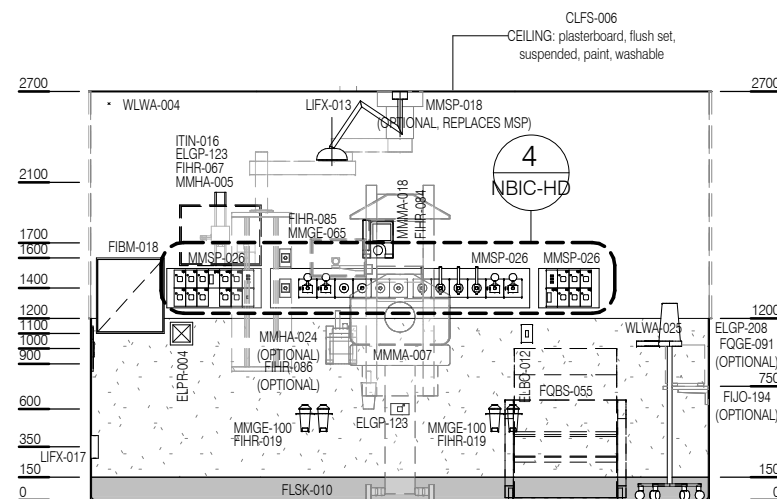
NEONATAL BAY - INTENSIVE CARE / HIGH DEPENDENCY CARE



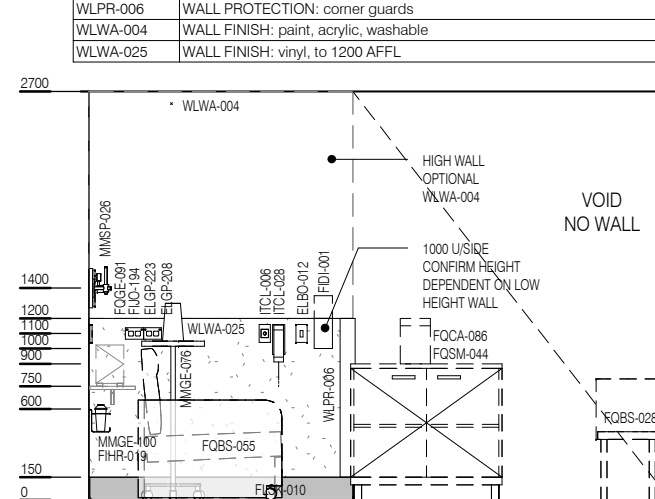
PLAN



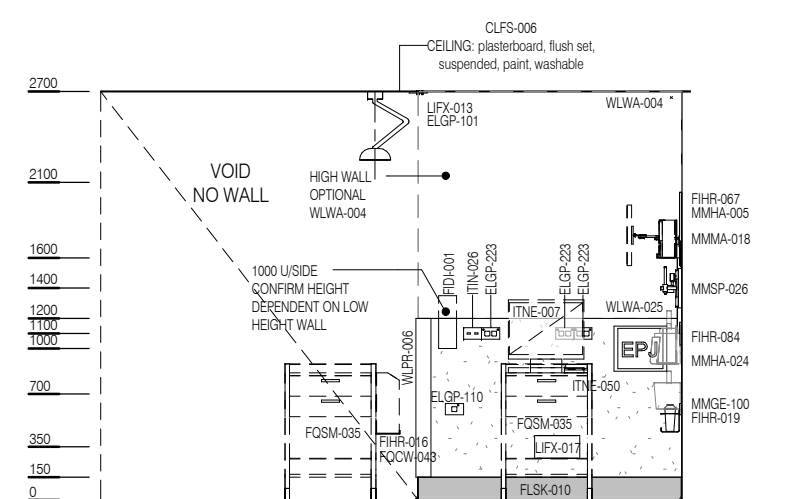
ELEVATION 4 (1 : 25 @ A3)



ELEVATION 1



ELEVATION 2



ELEVATION 3



REV	DESCRIPTION	DATE
4	General update following ERG review	13.05.2020

FOR GUIDANCE

SCALE	RLS Room Code	REV
1 : 50 @ A3	NBIC-HD	4