

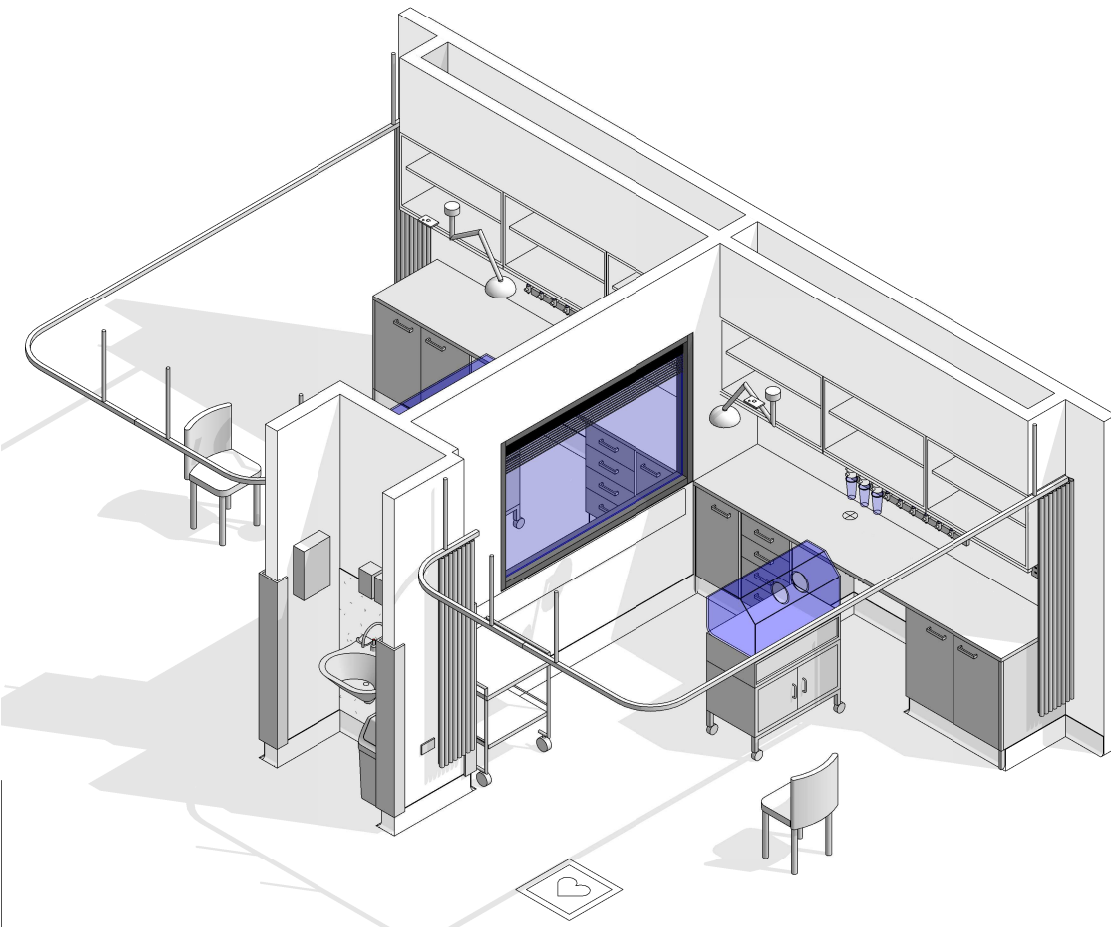
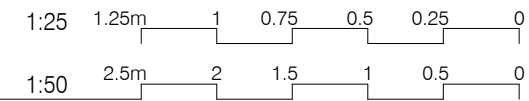
AUSTRALASIAN HFG STANDARD COMPONENTS

Room Layout Sheet

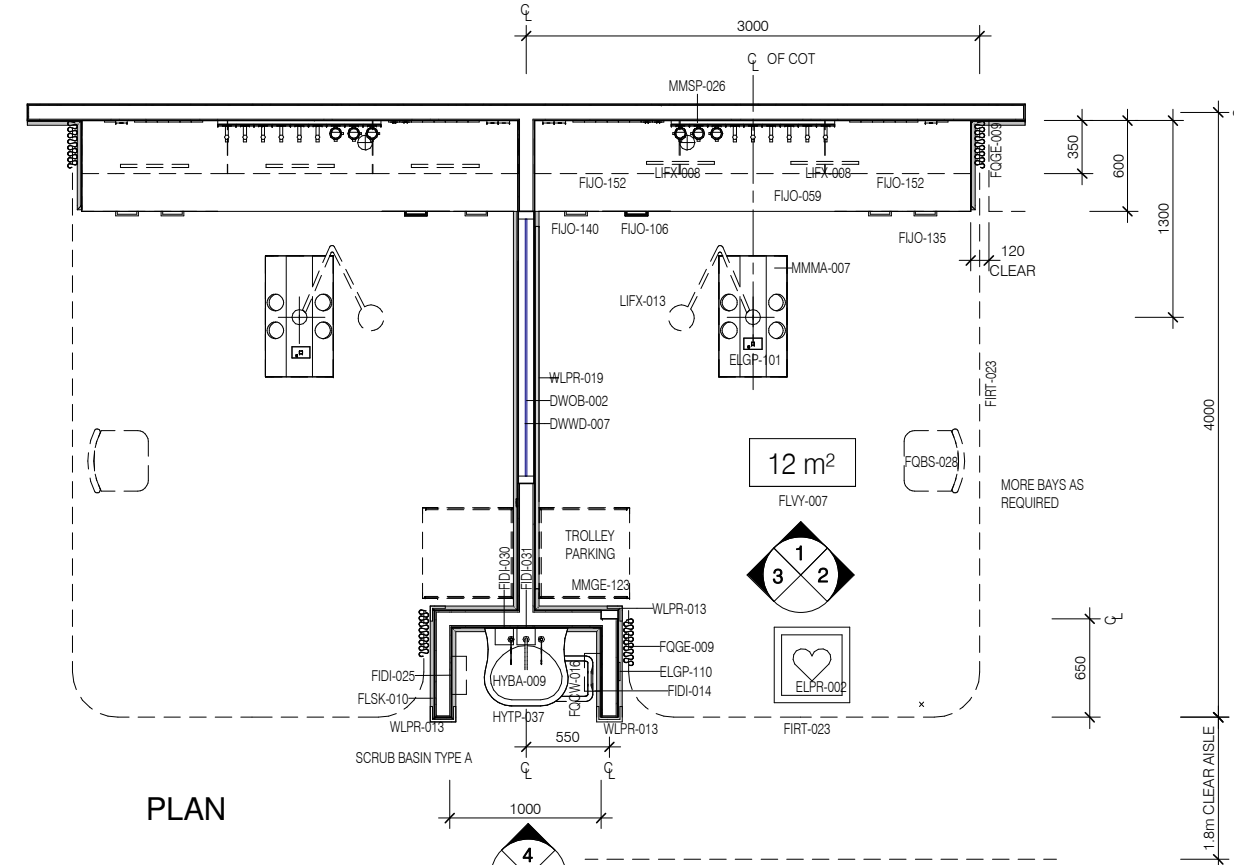
RLS Room Code: **NBICU**

Room Name:

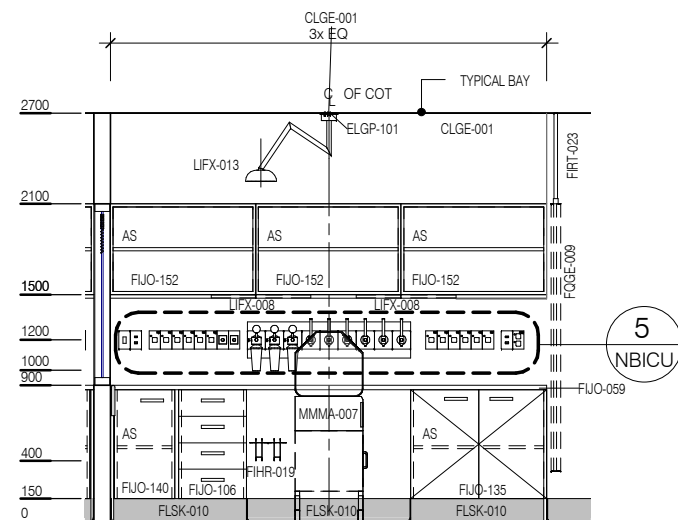
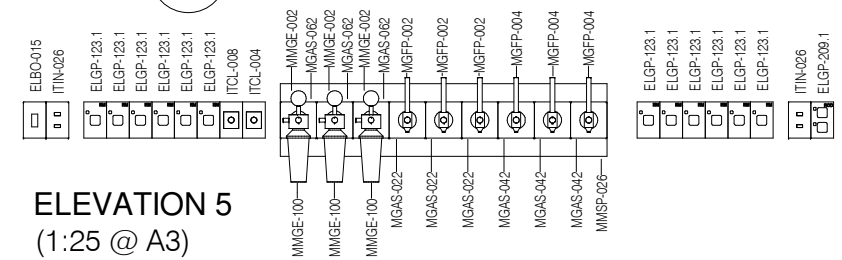
NEONATAL BAY - INTENSIVE CARE, 12m²



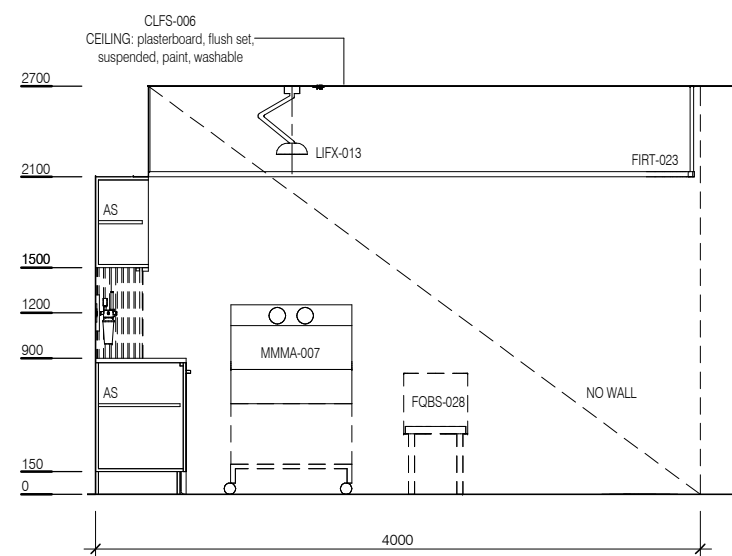
| CODE | DESCRIPTION |
|------------|---|
| CAC | Cable access cap |
| DWOB-002 | OBSERVATION: internal window, alum/glass, door height, powdercoat |
| DWWD-007 | BLIND: venetian, integral |
| ELBO-015 | SWITCH: light, single |
| ELGP-101 | GPO: single, ceiling mounted |
| ELGP-110 | GPO: single, wall mounted, cleaner |
| ELGP-123.1 | GPO: emergency power, single, wall mounted (V) |
| ELGP-209.1 | GPO: double, wall mounted, RCD protected (V) |
| ELPR-002 | CARDIAC PROTECTED ELECTRICAL AREA |
| FIDI-014 | DISPENSER: disposable glove |
| FIDI-025 | DISPENSER: paper/hand towel |
| FIDI-030 | DISPENSER: soap |
| FIDI-031 | DISPENSER: soap antiseptic |
| FIHR-019 | BRACKET: for suction bottle |
| FIJO-059 | BENCH TOP: 600D, joinery under, laminate finish |
| FIJO-106 | CUPBOARD: drawer unit, 4 equal |
| FIJO-135 | CUPBOARD: underbench, double door, adj shelves |
| FIJO-140 | CUPBOARD: underbench, single door, adj shelves |
| FIJO-152 | CUPBOARD: wall mount, shelf unit, adj shelves |
| FIRT-023 | TRACK: curtain, bedscreen, L shaped |
| FLSK-010 | SKIRTING: vinyl, floor vinyl coved, 150H, prefinished |
| FLVY-007 | FLOOR FINISH: vinyl, seamless, coved, standard slip resistant |
| FOBS-028 | CHAIR: visitor, clinical areas |
| FOCW-016 | BIN: waste, general, 20L |
| FOGE-009 | CURTAIN: bed screen |
| HYBA-009 | BASIN: handwash, Type A, scrub |
| HYTP-037 | TAPWARE: mixer, elbow levers |
| ITCL-004 | BUTTON: nurse call, emergency |
| ITCL-008 | BUTTON: nurse call, staff assist |
| ITIN-026 | OUTLET: data, double RJ45, wall mounted |
| LIFX-008 | LIGHT: task light, built in |
| LIFX-013 | LIGHT: procedure, ceiling mounted, small |
| MGAS-022 | OUTLET: medical air (MA), on services panel |
| MGAS-042 | OUTLET: oxygen (O2), on services panel |
| MGAS-062 | OUTLET: suction, on services panel |
| MGFP-002 | FLOWMETER: medical air |
| MGFP-004 | FLOWMETER: oxygen |
| MMGE-002 | ADAPTER: suction |
| MMGE-100 | SUCTION BOTTLE |
| MMGE-123 | TROLLEY: instrument |
| MMMA-007 | INCUBATOR: infant, humidicrib |
| MMSP-026 | SERVICES PANEL: wall mounted |
| WLPR-013 | WALL PROTECTION: corner guards, to 1500 AFFL, prefinished PVC |
| WLPR-019 | WALL PROTECTION: crash rail, at 900 AFFL, prefinished PVC |
| WLWA-004 | WALL FINISH: paint, acrylic, washable |
| WLWA-010 | WALL FINISH: splashback, vinyl |



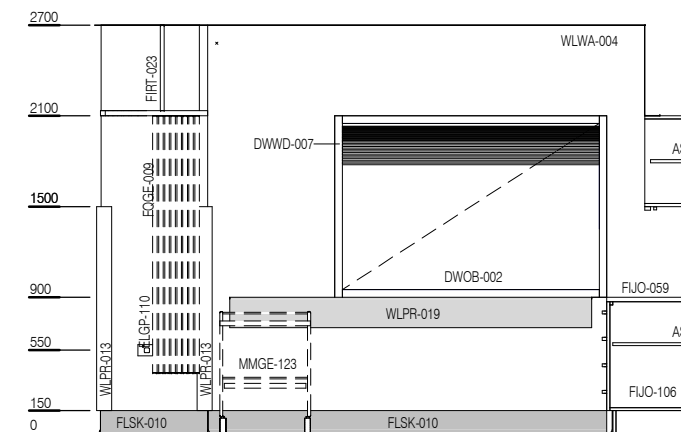
ELEVATION 5
(1:25 @ A3)



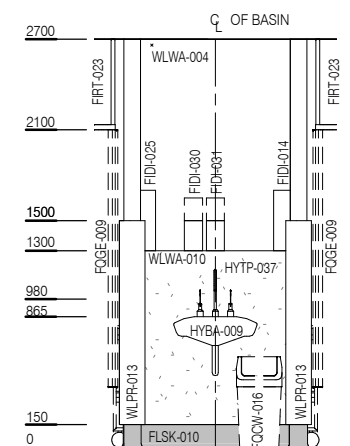
ELEVATION 1



ELEVATION 2



ELEVATION 3



ELEVATION 4

| REV | DESCRIPTION | DATE |
|-----|---------------------------|------------|
| 3 | Coding and naming updated | 20.03.2017 |

FOR GUIDANCE

| SCALE | RLS Room Code | REV |
|-------------|---------------|-----|
| 1 : 50 @ A3 | NBICU | 3 |

