

AUSTRALASIAN HFG STANDARD COMPONENTS

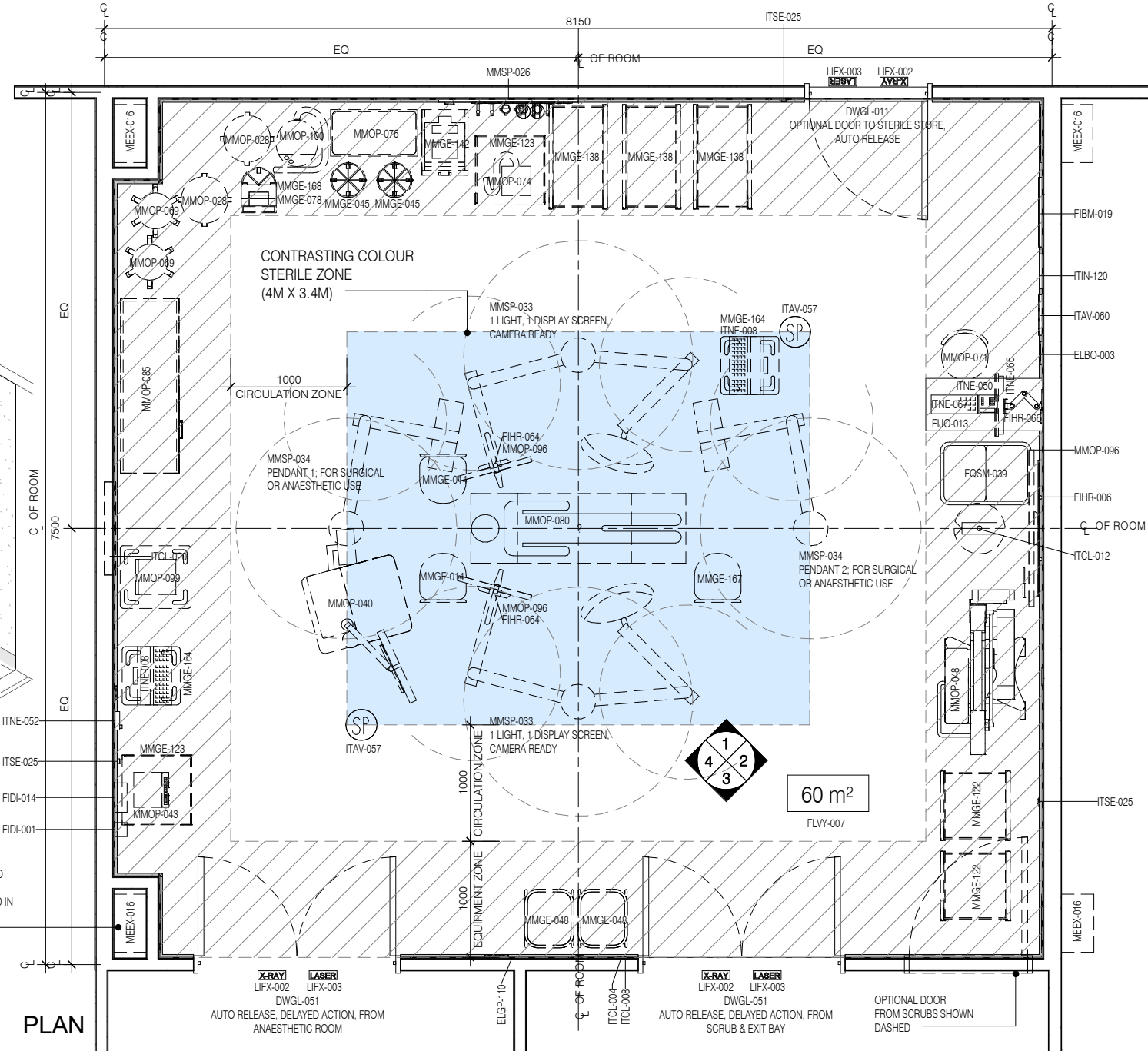
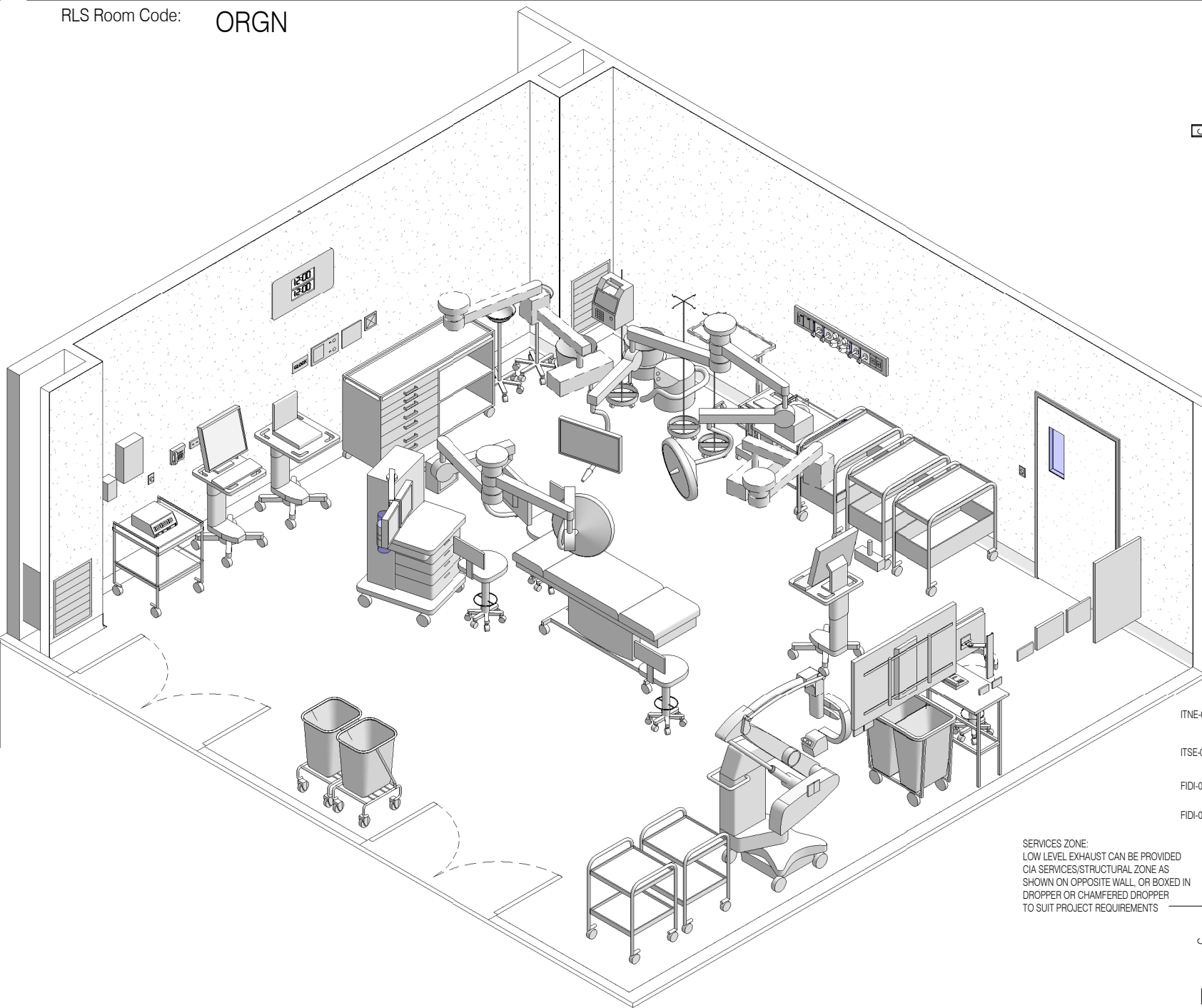
Room Layout Sheet

RLS Room Code: **ORGN**

1:50 2.5m 2 1.5 1 0.5 0

Room Name:

OPERATING ROOM - GENERAL



SERVICES ZONE:
LOW LEVEL EXHAUST CAN BE PROVIDED
VIA SERVICES/STRUCTURAL ZONE AS
SHOWN ON OPPOSITE WALL, OR BOXED IN
DROPPER OR CHAMFERED DROPPER
TO SUIT PROJECT REQUIREMENTS

PLAN

CODE	DESCRIPTION
DWPR-011	DOOR PROTECTION: protection plate, to full height
DWWH-007	SHUTTER: for observation panel, magnetic flap for laser protection
ELBO-003	CONTROL PANEL: lighting
ELBO-009	SWITCH: "Laser in use"
ELBO-016	SWITCH: "X-Ray in use"
ELGP-110	GPO: single, wall mounted, cleaner
ELGP-122.1	GPO: emergency power, single, on services panel (V)
ELGP-123.1	GPO: emergency power, single, wall mounted (V)
ELGP-223	GPO: emergency power, double, wall mounted
ELPR-004	MONITOR: line isolation
ELPR-006	RCD: residual current device
FIBM-019	WHITEBOARD: fixed, magnetic
FIDI-001	DISPENSER: alcohol based hand rub
FIDI-014	DISPENSER: disposable glove
FIHR-006	BRACKET: for display screen, wall mounted
FIHR-019	BRACKET: for suction bottle
FIHR-064	BRACKET: for display screen, arm mounted, rotating
FIHR-066	BRACKET: for display screen, wall mounted, articulated, adj height
FUJO-013	BENCH: 450D, open under, stainless steel

CODE	DESCRIPTION
FUJO-100	BENCH LEGS: stainless steel, for bench top
FLSK-010	SKIRTING: vinyl, floor vinyl coved, 150H, prefinished
FLVY-007	FLOOR FINISH: vinyl, seamless, coved, standard slip resistant
FQSM-039	TROLLEY: waste bag
ITAV-057	SPEAKER: ceiling recessed
ITAV-060	CONTROL PANEL: AV integration system, wall mount
ITCL-004	BUTTON: nurse call, emergency
ITCL-008	BUTTON: nurse call, staff assist
ITCL-012	CAMERA: observation
ITCL-020	CLOCK: clock system slave, dual digital / elapsed time
ITCL-023	CONTROL PANEL: master clock system
ITNE-026	OUTLET: data, double RJ45, wall mounted
ITIN-120	PATCH PANEL: data integration
ITNE-008	COMPUTER: for workstation on wheels
ITNE-052	TELEPHONE: handset, desktop, handsfree
ITNE-052	TELEPHONE: handset, wall mount
ITNE-066	COMPUTER: all-in-one, wall mounted
ITNE-067	KEYBOARD: keyboard and mouse only
ITSE-025	DOOR RELEASE: access control, remote activation
LIFX-002	LIGHT: illuminated sign, "X-Ray in Use"

CODE	DESCRIPTION
LIFX-003	LIGHT: illuminated sign, "Laser in Use"
MEEV-016	RETURN AIR: grille, low level
MMOP-022	OUTLET: medical air (MA), on services panel
MGAS-042	OUTLET: oxygen (O2), on services panel
MGAS-062	OUTLET: suction, on services panel
MGFP-001	ALARM PANEL: medical gases
MGFP-002	FLOWMETER: medical air
MGFP-004	FLOWMETER: oxygen
MMOP-007	CONTROL PANEL: tool air
MMGE-002	ADAPTER: suction
MMGE-014	CHAIR: anaesthetist
MMGE-045	IV STAND: mobile
MMGE-048	LINEN CARRIER: dirty, single
MMGE-078	PUMP: infusion
MMGE-100	SUCTION BOTTLE
MMGE-122	TROLLEY: gowns
MMGE-123	TROLLEY: instrument
MMGE-138	TROLLEY: preparation
MMGE-142	TROLLEY: sharps bin
MMGE-164	WORKSTATION ON WHEELS: clinical, mobile
MMGE-167	CHAIR: surgeon

CODE	DESCRIPTION
MMGE-168	STAND: infusion pump, mobile
MMOP-028	KICKBUCKET & STAND:
MMOP-040	MACHINE: anaesthetic
MMOP-043	MACHINE: electrosurgical, diathermy
MMOP-048	MICROSCOPE: ENT, surgical
MMOP-069	STAND: bowl, single
MMOP-071	STOOL: operating, mobile
MMOP-074	SYSTEM: smoke evacuation
MMOP-076	TABLE: mayo
MMOP-080	TABLE: operating, mobile, electric
MMOP-085	TROLLEY: anaesthetic
MMOP-096	DISPLAY SCREEN: AV integration
MMOP-099	DEVICE: imaging, ultrasound, anaesthetic
MMOP-100	WARMER: patient, intraoperative
MMSP-026	SERVICES PANEL: wall mounted
MMSP-033	LIGHT: operating, 2 arm, light 700 diam nom. / arm for display screen
MMSP-034	PENDANT: single, dual arm, surgical & anaesthetic combined (fixed or adjustable height)
WLWA-019	WALL FINISH: vinyl, full height

NOTE: REFER TO RDS FOR PENDANT MOUNTED SERVICES AS THESE ITEMS ARE NOT INCLUDED IN THIS SCHEDULE



REV	DESCRIPTION	DATE
5	Coding and naming updated	20.03.2017
6	GENERAL UPDATE FOLLOWING ERG.. REVIEW	02.07.2018

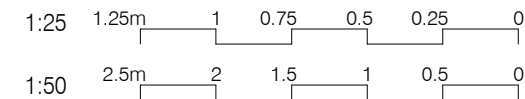
FOR GUIDANCE

SCALE	RLS Room Code	REV
1 : 50 @ A3	ORGN	6

AUSTRALASIAN HFG STANDARD COMPONENTS

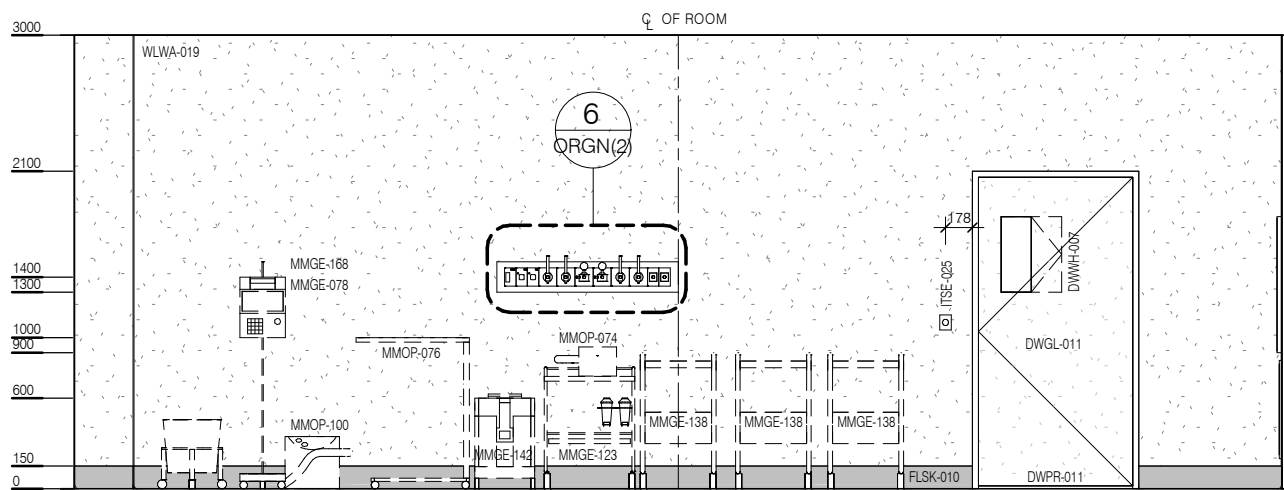
Room Layout Sheet

RLS Room Code: **ORGN**

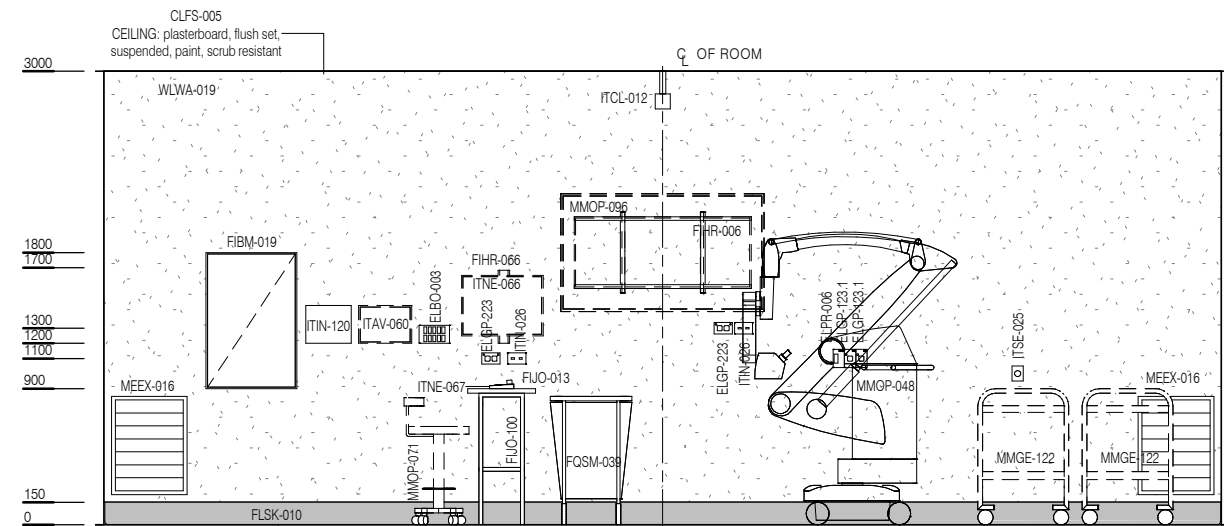


Room Name:

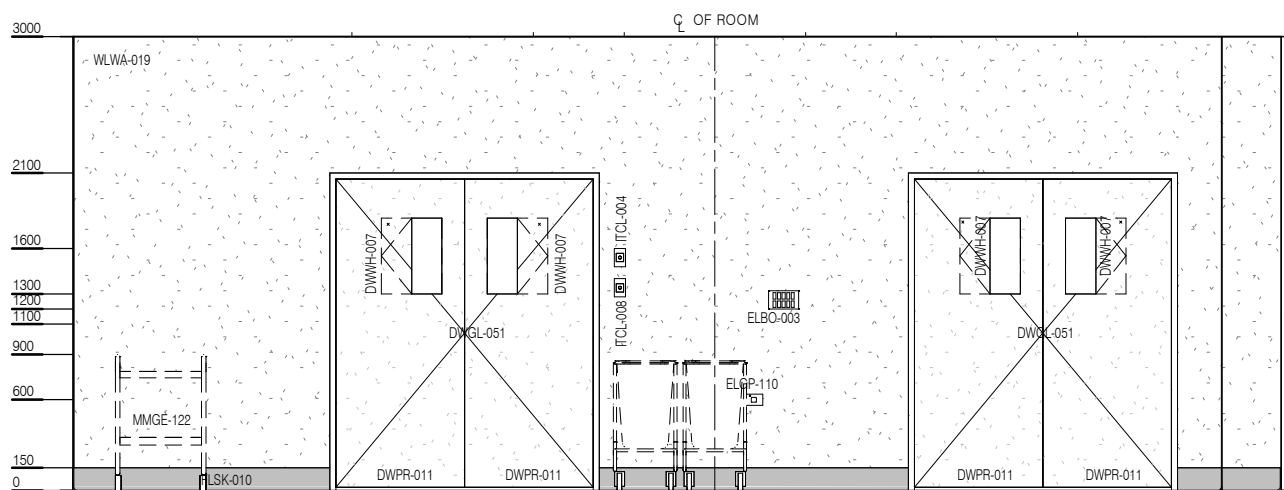
OPERATING ROOM - GENERAL



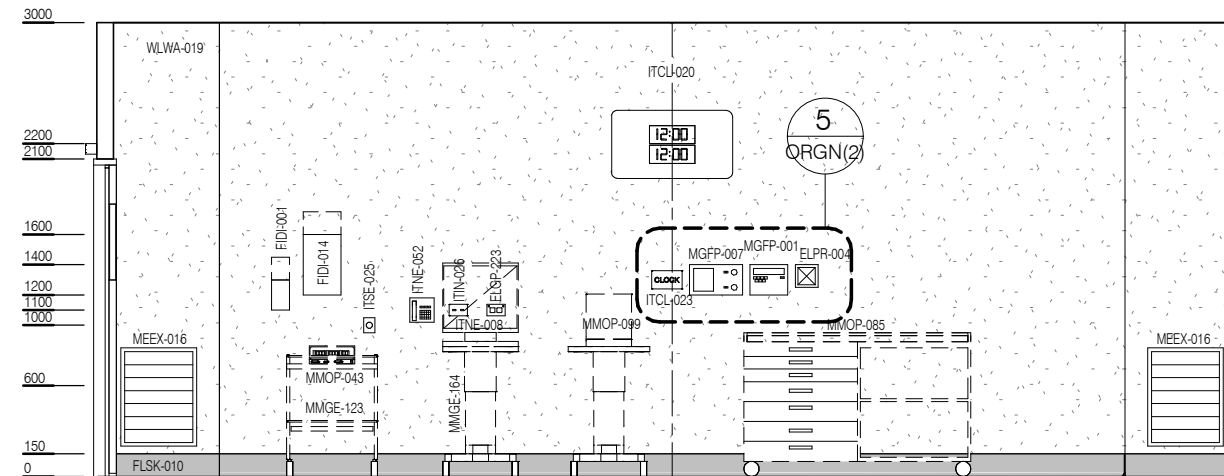
ELEVATION 1



ELEVATION 2



ELEVATION 3



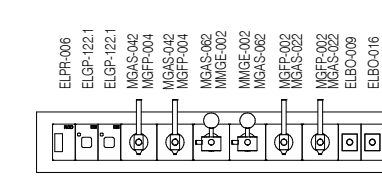
ELEVATION 4

CODE	DESCRIPTION
DWPR-011	DOOR PROTECTION: protection plate, to full height
DWWH-007	SHUTTER: for observation panel, magnetic flap for laser protection
ELBO-003	CONTROL PANEL: lighting
ELBO-009	SWITCH: "Laser in use"
ELBO-016	SWITCH: "X-Ray in use"
ELGP-110	GPO: single, wall mounted, cleaner
ELGP-122.1	GPO: emergency power, single, on services panel (V)
ELGP-123.1	GPO: emergency power, single, wall mounted (V)
ELGP-223	GPO: emergency power, double, wall mounted
ELPR-004	MONITOR: line isolation
ELPR-006	RCD: residual current device
FIBM-019	WHITEBOARD: fixed, magnetic
FIDI-001	DISPENSER: alcohol based hand rub
FIDI-014	DISPENSER: disposable glove
FIHR-006	BRACKET: for display screen, wall mounted
FIHR-019	BRACKET: for suction bottle
FIHR-064	BRACKET: for display screen, arm mounted, rotating
FIHR-066	BRACKET: for display screen, wall mounted, articulated, adj height
FIUO-013	BENCH: 450D, open under, stainless steel

CODE	DESCRIPTION
FIUO-100	BENCH LEGS: stainless steel, for bench top
FLSK-010	SKIRTING: vinyl, floor vinyl coved, 150H, prefinished
FLVY-007	FLOOR FINISH: vinyl, seamless, coved, standard slip resistant
FQSM-039	TROLLEY: waste bag
ITAV-057	SPEAKER: ceiling recessed
ITAV-060	CONTROL PANEL: AV integration system, wall mount
ITCL-004	BUTTON: nurse call, emergency
ITCL-008	BUTTON: nurse call, staff assist
ITCL-012	CAMERA: observation
ITCL-020	CLOCK: clock system slave, dual digital / elapsed time
ITCL-023	CONTROL PANEL: master clock system
ITIN-026	OUTLET: data, double RJ45, wall mounted
ITIN-120	PATCH PANEL: data integration
ITNE-008	COMPUTER: for workstation on wheels
ITNE-050	TELEPHONE: handset, desktop, handsfree
ITNE-052	TELEPHONE: handset, wall mount
ITNE-066	COMPUTER: all-in-one, wall mounted
ITNE-067	KEYBOARD: keyboard and mouse only
ITSE-025	DOOR RELEASE: access control, remote activation
LIFX-002	LIGHT: illuminated sign, "X-Ray in Use"

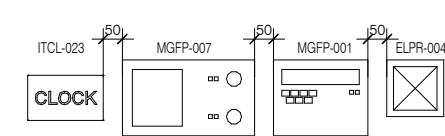
CODE	DESCRIPTION
LIFX-003	LIGHT: illuminated sign, "Laser in Use"
MEEEX-016	RETURN AIR: grille, low level
MGAS-022	OUTLET: medical air (MA), on services panel
MGAS-042	OUTLET: oxygen (O2), on services panel
MGAS-062	OUTLET: suction, on services panel
MGFP-001	ALARM PANEL: medical gases
MGFP-002	FLOWMETER: medical air
MGFP-004	FLOWMETER: oxygen
MGFP-007	CONTROL PANEL: tool air
MMGE-002	ADAPTER: suction
MMGE-014	CHAIR: anaesthetist
MMGE-045	IV STAND: mobile
MMGE-048	LINEN CARRIER: dirty, single
MMGE-078	PUMP: infusion
MMGE-100	SUCTION BOTTLE
MMGE-122	TROLLEY: gowns
MMGE-123	TROLLEY: instrument
MMGE-138	TROLLEY: preparation
MMGE-142	TROLLEY: sharps bin
MMGE-164	WORKSTATION ON WHEELS: clinical, mobile
MMGE-167	CHAIR: surgeon

CODE	DESCRIPTION
MMGE-168	STAND: infusion pump, mobile
MMOP-028	KICKBUCKET & STAND:
MMOP-040	MACHINE: anaesthetic
MMOP-043	MACHINE: electrosurgical, diathermy
MMOP-048	MICROSCOPE: ENT, surgical
MMOP-069	STAND: bowl, single
MMOP-071	STOOL: operating, mobile
MMOP-074	SYSTEM: smoke evacuation
MMOP-076	TABLE: mayo
MMOP-080	TABLE: operating, mobile, electric
MMOP-085	TROLLEY: anaesthetic
MMOP-096	DISPLAY SCREEN: AV integration
MMOP-099	DEVICE: imaging, ultrasound, anaesthetic
MMOP-100	WARMER: patient, intraoperative
MMSP-026	SERVICES PANEL: wall mounted
MMSP-033	LIGHT: operating, 2 arm, light 700 diam nom. / arm for display screen
MMSP-034	PENDANT: single, dual arm, surgical & anaesthetic combined (fixed or adjustable height)
WLWA-019	WALL FINISH: vinyl, full height



ELEVATION 6 (1 : 25 @ A3)

NOTE: WALL PANEL GASES ARE OPTIONAL - INCLUDE FOR OBSTETRIC CASE LOADS AND CONSIDER INCLUSION FOR PENDANT BACK UP



ELEVATION 5 (1 : 20 @ A3)

NOTE: REFER TO RDS FOR PENDANT MOUNTED SERVICES AS THESE ITEMS ARE NOT INCLUDED IN THIS SCHEDULE



REV	DESCRIPTION	DATE
5	Coding and naming updated	20.03.2017
6	GENERAL UPDATE FOLLOWING ERG.. REVIEW	02.07.2018

FOR GUIDANCE

SCALE	RLS Room Code	REV
1 : 50 @ A3	ORGN	6