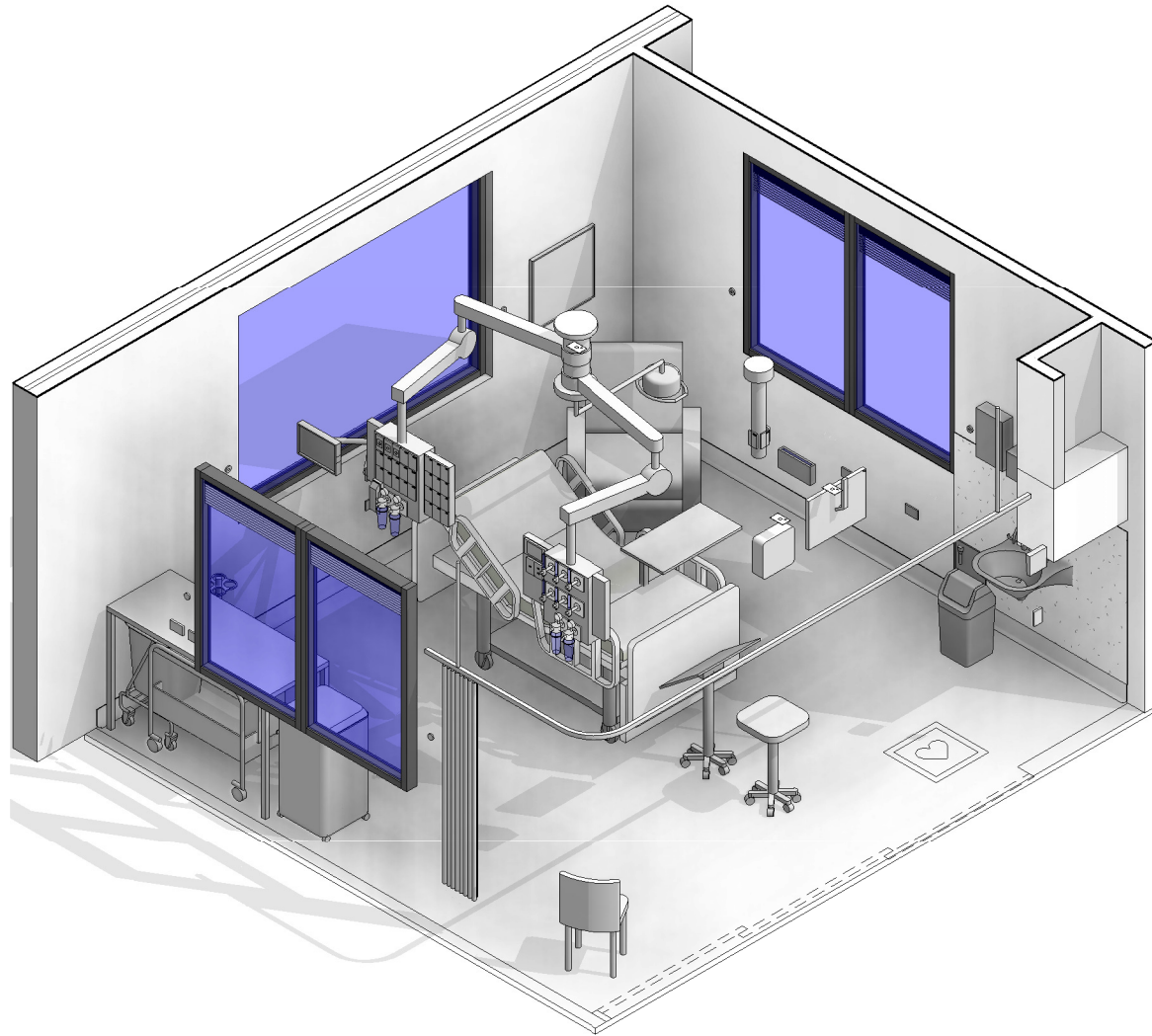


AUSTRALASIAN HFG STANDARD COMPONENTS

Room Layout Sheet

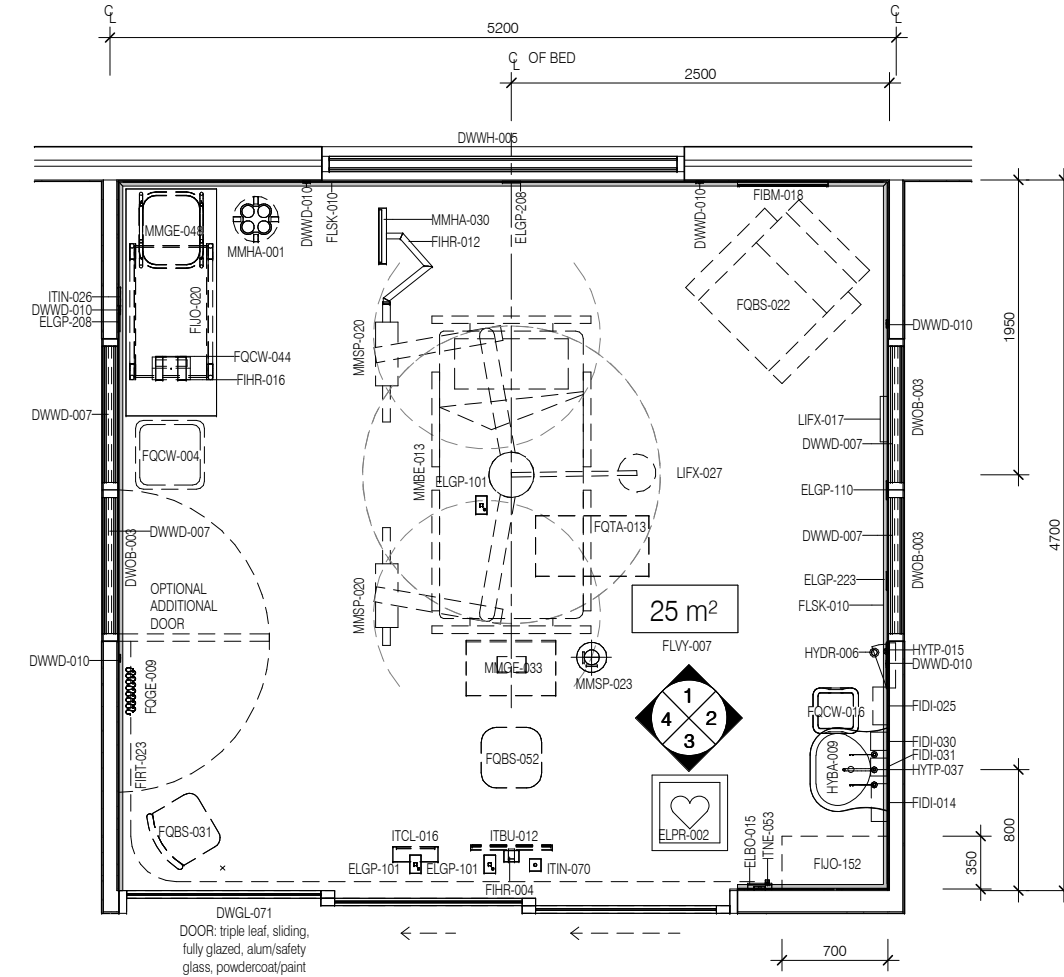
RLS Room Code: **PBCE-25**

1:50 2.5m 2 1.5 1 0.5 0



Room Name: **PATIENT BAY - CRITICAL (ENCLOSED), 25m²**

CODE	DESCRIPTION
DWOB-003	OBSERVATION: internal window, alum/glass, double glazed, integral venetian blind, powdercoat
DWOB-004	OBSERVATION: internal window, alum/glass, internal blinds, powdercoat
DWWD-007	BLIND: venetian, integral
DWWD-010	CONTROL: venetian blind, remote
DWWH-005	WINDOW
ELBO-015	SWITCH: light, single
ELGP-101	GPO: single, ceiling mounted
ELGP-110	GPO: single, wall mounted, cleaner
ELGP-208	GPO: double, wall mounted
ELGP-223	GPO: emergency power, double, wall mounted
ELPR-002	CARDIAC PROTECTED ELECTRICAL AREA
FIBM-018	WHITEBOARD: fixed
FIDI-014	DISPENSER: disposable glove
FIDI-025	DISPENSER: paper/hand towel
FIDI-030	DISPENSER: soap
FIDI-031	DISPENSER: soap antiseptic
FIHR-004	BRACKET: for display screen, ceiling mounted
FIHR-012	BRACKET: for monitor, cardiac
FIHR-016	BRACKET: for sharps bin
FJO-020	BENCH: 600D, open under, laminate finish
FJO-152	CUPBOARD: wall mount, shelf unit, adj shelves
FIRT-023	TRACK: curtain, bedscreen, L shaped
FLSK-010	SKIRTING: vinyl, floor vinyl coved, 150H, prefinished
FLVY-007	FLOOR FINISH: vinyl, seamless, coved, standard slip resistant
FQBS-022	CHAIR: recliner, clinical
FQBS-031	CHAIR: visitor, patient, stackable
FQBS-052	STOOL: mobile, high, adj height
FQCW-004	BIN: waste, clinical, 120L
FQCW-016	BIN: waste, general, 20L
FQCW-044	BIN: waste, sharps, wall mounted
FQGE-009	CURTAIN: bed screen
FQSM-016	TROLLEY
FQTA-013	TABLE: overbed
HYBA-009	BASIN: handwash, Type A, scrub
HYDR-006	DRAIN: tundish
HYTP-015	OUTLET: reverse osmosis (RO) water
HYTP-037	TAPWARE: mixer, elbow levers
ITBU-012	DISPLAY SCREEN: patient entertainment system
ITCL-016	CLOCK: clock system slave, analogue
ITIN-026	OUTLET: data, double RJ45, wall mounted
ITIN-070	OUTLET: MATV
ITNE-053	TELEPHONE: handset, wall mount, handsfree
LIFX-017	LIGHT: night light
LIFX-027	LIGHT: examination, ceiling mounted
MMBE-013	BED: patient, ICU, electric
MMGE-033	FLOWCHART STAND: mobile
MMGE-048	LINEN CARRIER: dirty, single
MMGE-096	STATION: dialysis
MMHA-001	CARRIER: suction bottle
MMHA-030	MONITOR: patient, cardiac, pendant mounted
MMSP-020	PENDANT: tandem, wet and dry combination (fixed or adjustable height)
MMSP-023	PENDANT: single, power and data
WLWA-004	WALL FINISH: paint, acrylic, washable
WLWA-010	WALL FINISH: splashback, vinyl



PLAN

NOTE: LIST BELOW INCLUDES PENDANT: SINGLE, POWER + DATA

PBCE-25 PENDANTS		
CODE	DESCRIPTION	COUNT
ELGP-104	GPO: single, on pendant	12
ELGP-121.1	GPO: emergency power, single, on pendant (V)	12
ELGP-204	GPO: double, on pendant	2
ELPR-006	RCD: residual current device	1
ITCL-004	BUTTON: nurse call, emergency	1
ITCL-006	BUTTON: nurse call, patient to staff	1
ITCL-008	BUTTON: nurse call, staff assist	1
ITCL-028	HANDSET: nurse call, with patient to staff call button	1
ITIN-014	OUTLET: data, single RJ45, on pendant	1
ITIN-024	OUTLET: data, double RJ45, on pendant	2
MGAS-021	OUTLET: medical air (MA), on pendant	2
MGAS-041	OUTLET: oxygen (O2), on pendant	4
MGAS-061	OUTLET: suction, on pendant	4
MGFP-002	FLOWMETER: medical air	2
MGFP-004	FLOWMETER: oxygen	4
MMGE-002	ADAPTER: suction	4
MMGE-100	SUCTION BOTTLE	4



REV	DESCRIPTION	DATE
4	Coding and naming updated	20.03.2017

FOR GUIDANCE

SCALE	RLS Room Code	REV
1 : 50 @ A3	PBCE-25	4

AUSTRALASIAN HFG STANDARD COMPONENTS

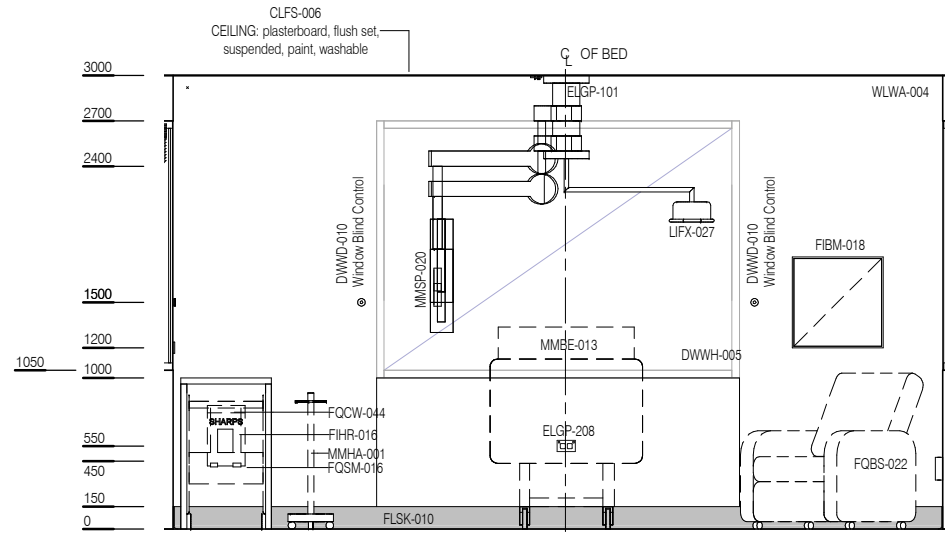
Room Layout Sheet

RLS Room Code: **PBCE-25**

1:50 2.5m 2 1.5 1 0.5 0

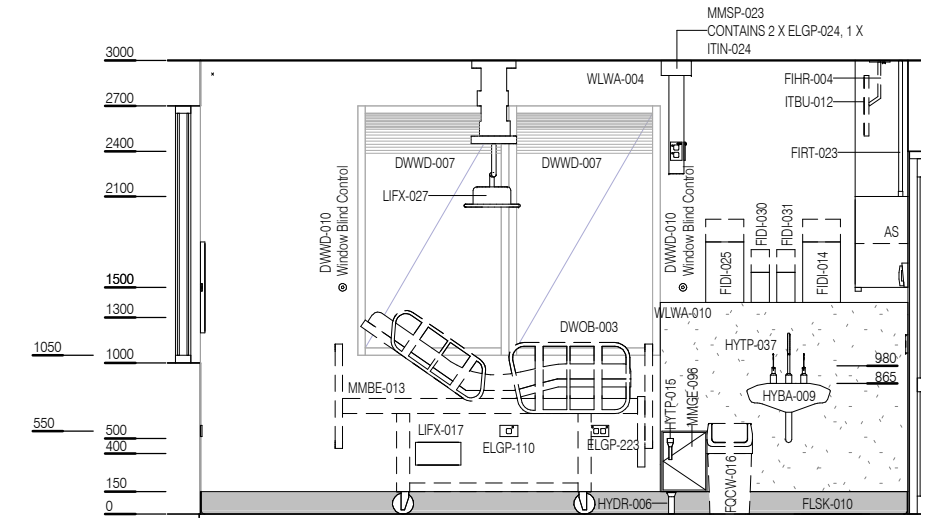
Room Name:

PATIENT BAY - CRITICAL (ENCLOSED), 25m²

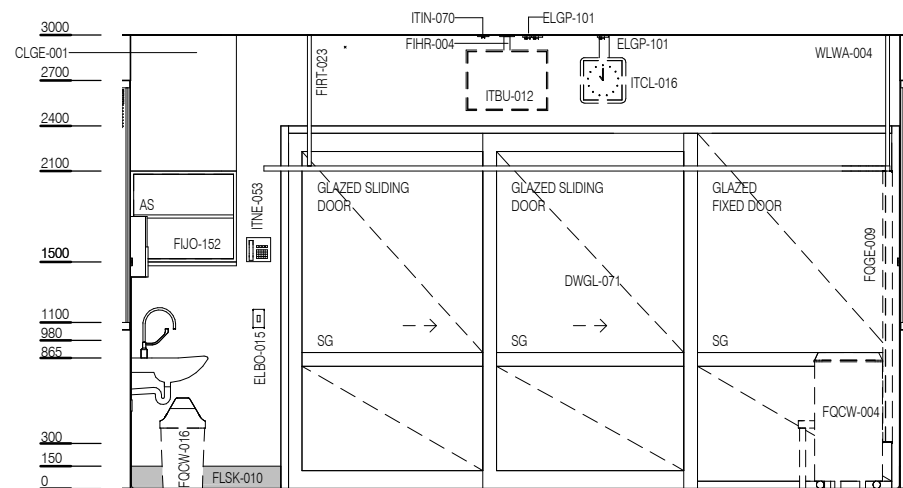


ELEVATION 1

CODE	DESCRIPTION
DWOB-003	OBSERVATION: internal window, alum/glass, double glazed, integral venetian blind, powdercoat
DWOB-004	OBSERVATION: internal window, alum/glass, internal blinds, powdercoat
DWWD-007	BLIND: venetian, integral
DWWD-010	CONTROL: venetian blind, remote
DWWH-005	WINDOW
ELBO-015	SWITCH: light, single
ELGP-101	GPO: single, ceiling mounted
ELGP-110	GPO: single, wall mounted, cleaner
ELGP-208	GPO: double, wall mounted
ELGP-223	GPO: emergency power, double, wall mounted
ELPR-002	CARDIAC PROTECTED ELECTRICAL AREA
FIBM-018	WHITEBOARD: fixed
FIDI-014	DISPENSER: disposable glove
FIDI-025	DISPENSER: paper/hand towel
FIDI-030	DISPENSER: soap
FIDI-031	DISPENSER: soap antiseptic
FIHR-004	BRACKET: for display screen, ceiling mounted
FIHR-012	BRACKET: for monitor, cardiac
FIHR-016	BRACKET: for sharps bin
FUO-020	BENCH: 600D, open under, laminate finish
FUO-152	CUPBOARD: wall mount, shelf unit, adj shelves
FIRT-023	TRACK: curtain, bedscreen, L shaped
FLSK-010	SKIRTING: vinyl, floor vinyl coved, 150H, prefinished
FLVY-007	FLOOR FINISH: vinyl, seamless, coved, standard slip resistant
FQBS-022	CHAIR: recliner, clinical
FQBS-031	CHAIR: visitor, patient, stackable
FQBS-052	STOOL: mobile, high, adj height
FQCW-004	BIN: waste, clinical, 120L
FQCW-016	BIN: waste, general, 20L
FQCW-044	BIN: waste, sharps, wall mounted
FQGE-009	CURTAIN: bed screen
FQSM-016	TROLLEY
FQTA-013	TABLE: overbed
HYBA-009	BASIN: handwash, Type A, scrub
HYDR-006	DRAIN: tundish
HYTP-015	OUTLET: reverse osmosis (RO) water
HYTP-037	TAPWARE: mixer, elbow levers
ITBU-012	DISPLAY SCREEN: patient entertainment system
ITCL-016	CLOCK: clock system slave, analogue
ITIN-026	OUTLET: data, double RJ45, wall mounted
ITIN-070	OUTLET: MATV
ITNE-053	TELEPHONE: handset, wall mount, handsfree
LIFX-017	LIGHT: night light
LIFX-027	LIGHT: examination, ceiling mounted
MMBE-013	BED: patient, ICU, electric
MMGE-033	FLOWCHART STAND: mobile
MMGE-048	LINEN CARRIER: dirty, single
MMGE-096	STATION: dialysis
MMHA-001	CARRIER: suction bottle
MMHA-030	MONITOR: patient, cardiac, pendant mounted
MMSp-020	PENDANT: tandem, wet and dry combination (fixed or adjustable height)
MMSp-023	PENDANT: single, power and data
WLWA-004	WALL FINISH: paint, acrylic, washable
WLWA-010	WALL FINISH: splashback, vinyl



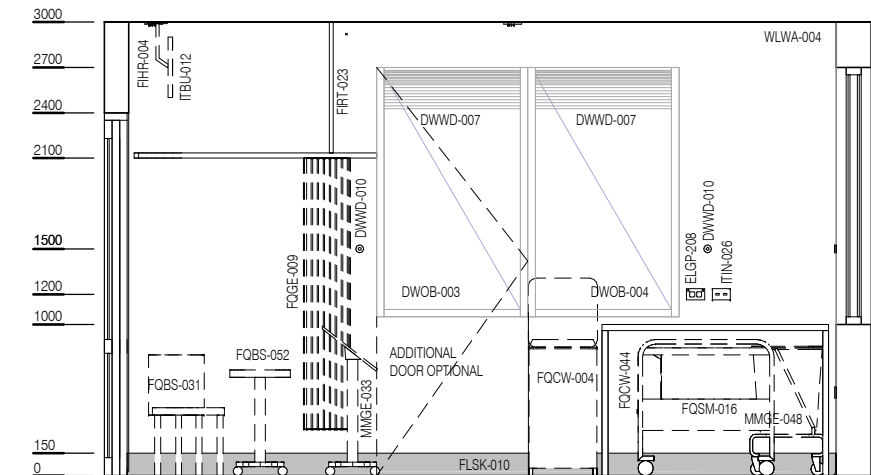
ELEVATION 2



ELEVATION 3

NOTE: LIST BELOW INCLUDES PENDANT: SINGLE, POWER + DATA

PBCE-25 PENDANTS		
CODE	DESCRIPTION	COUNT
ELGP-104	GPO: single, on pendant	12
ELGP-121.1	GPO: emergency power, single, on pendant (V)	12
ELGP-204	GPO: double, on pendant	2
ELPR-006	RCD: residual current device	1
ITCL-004	BUTTON: nurse call, emergency	1
ITCL-006	BUTTON: nurse call, patient to staff	1
ITCL-008	BUTTON: nurse call, staff assist	1
ITCL-028	HANDSET: nurse call, with patient to staff call button	1
ITIN-014	OUTLET: data, single RJ45, on pendant	1
ITIN-024	OUTLET: data, double RJ45, on pendant	2
MGAS-021	OUTLET: medical air (MA), on pendant	2
MGAS-041	OUTLET: oxygen (O2), on pendant	4
MGAS-061	OUTLET: suction, on pendant	4
MGFP-002	FLOWMETER: medical air	2
MGFP-004	FLOWMETER: oxygen	4
MMGE-002	ADAPTER: suction	4
MMGE-100	SUCTION BOTTLE	4



ELEVATION 4



REV	DESCRIPTION	DATE
4	Coding and naming updated	20.03.2017

FOR GUIDANCE

SCALE	RLS Room Code	REV
1 : 50 @ A3	PBCE-25	4