

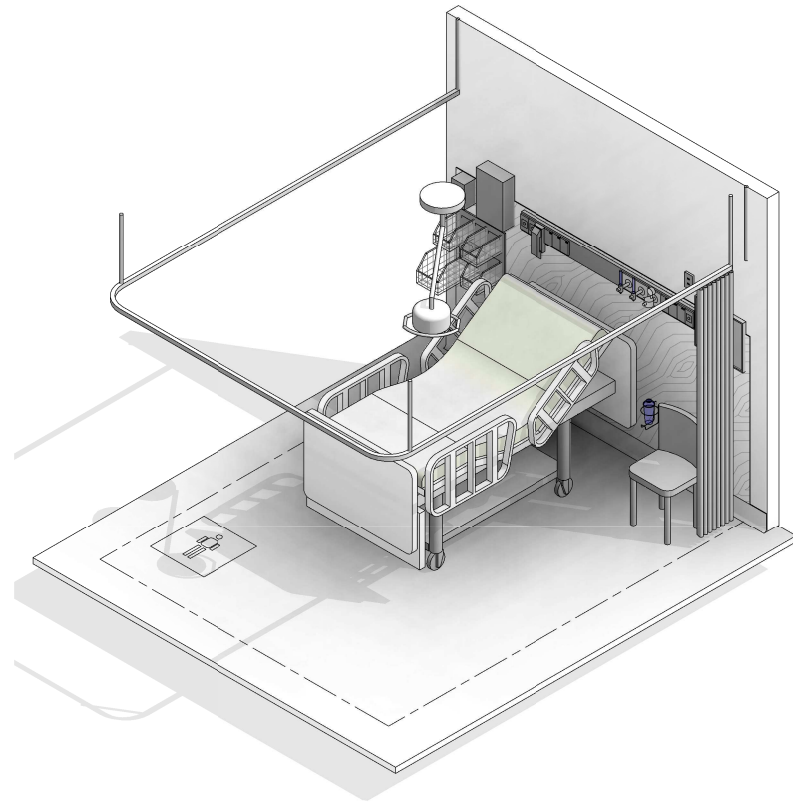
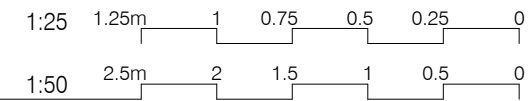
AUSTRALASIAN HFG STANDARD COMPONENTS

Room Layout Sheet

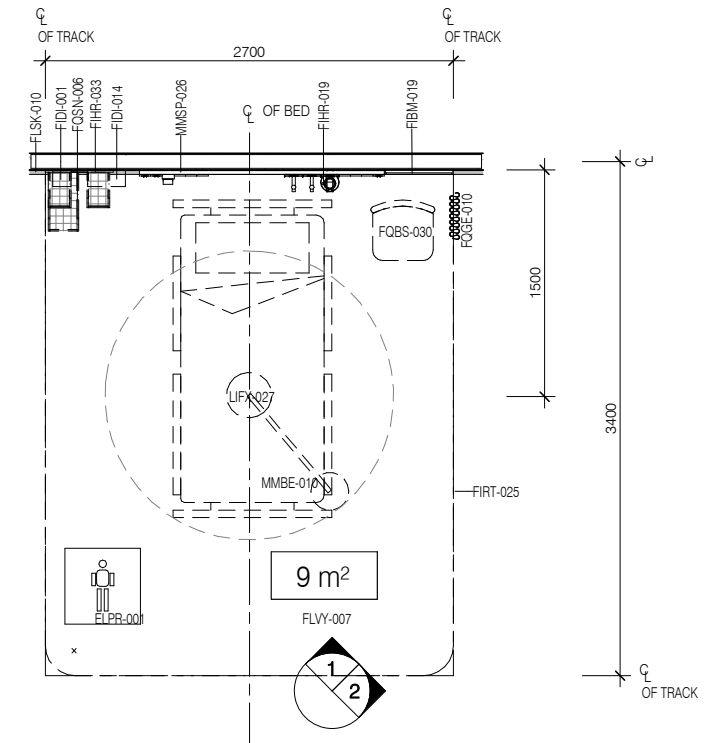
RLS Room Code: **PBTR-H-9**

Room Name:

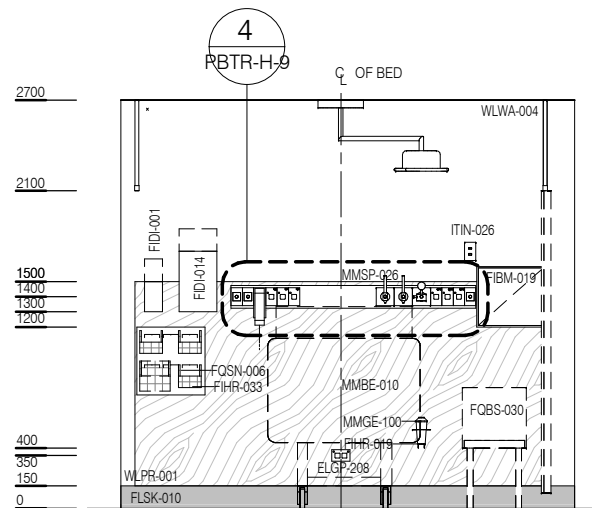
PATIENT BAY - HOLDING, 9m²



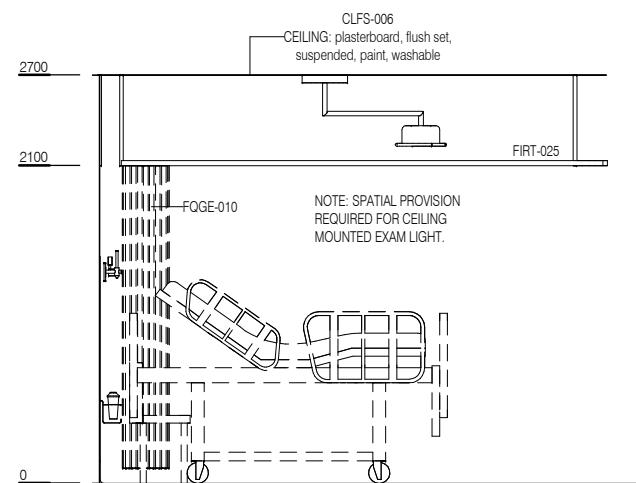
CODE	DESCRIPTION
ELGP-105	GPO: single, on services panel
ELGP-122.1	GPO: emergency power, single, on services panel (V)
ELGP-208	GPO: double, wall mounted
ELPR-001	BODY PROTECTED ELECTRICAL AREA
FIBM-019	WHITEBOARD: fixed, magnetic
FIDI-001	DISPENSER: alcohol based hand rub
FIDI-014	DISPENSER: disposable glove
FIHR-019	BRACKET: for suction bottle
FIHR-033	PANEL: for storage bins, wall mount
FIRT-025	TRACK: curtain, bedscreen, U shaped
FLSK-010	SKIRTING: vinyl, floor vinyl coved, 150H, prefinished
FLVY-007	FLOOR FINISH: vinyl, seamless, coved, standard slip resistant
FOBS-030	CHAIR: visitor, patient
FOGE-010	CURTAIN: privacy screen
FOSN-006	BIN: storage bins, for wall mounted panel
FOSN-007	BIN: storage bins, wire mesh, stainless steel
ITCL-004	BUTTON: nurse call, emergency
ITCL-006	BUTTON: nurse call, patient to staff
ITCL-008	BUTTON: nurse call, staff assist
ITCL-028	HANDSET: nurse call, with patient to staff call button
ITIN-026	OUTLET: data, double RJ45, wall mounted
LIFX-027	LIGHT: examination, ceiling mounted
MGAS-022	OUTLET: medical air (MA), on services panel
MGAS-042	OUTLET: oxygen (O2), on services panel
MGAS-062	OUTLET: suction, on services panel
MGFP-002	FLOWMETER: medical air
MGFP-004	FLOWMETER: oxygen
MMBE-010	BED: patient, electric with mattress
MMGE-002	ADAPTER: suction
MMGE-100	SUCTION BOTTLE
MMSP-026	SERVICES PANEL: wall mounted
WLPR-001	WALL PROTECTION: bed protection wall panel
WLWA-004	WALL FINISH: paint, acrylic, washable



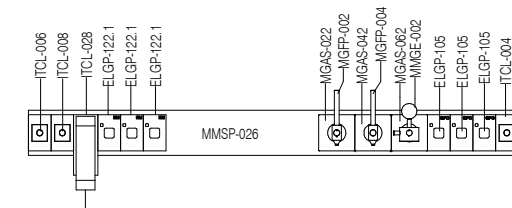
PLAN



ELEVATION 1



ELEVATION 2



ELEVATION 3 (1:25 @ A3)

REV	DESCRIPTION	DATE
6	Coding and naming updated	20.03.2017

FOR GUIDANCE

SCALE	RLS Room Code	REV
1 : 50 @ A3	PBTR-H-9	6