

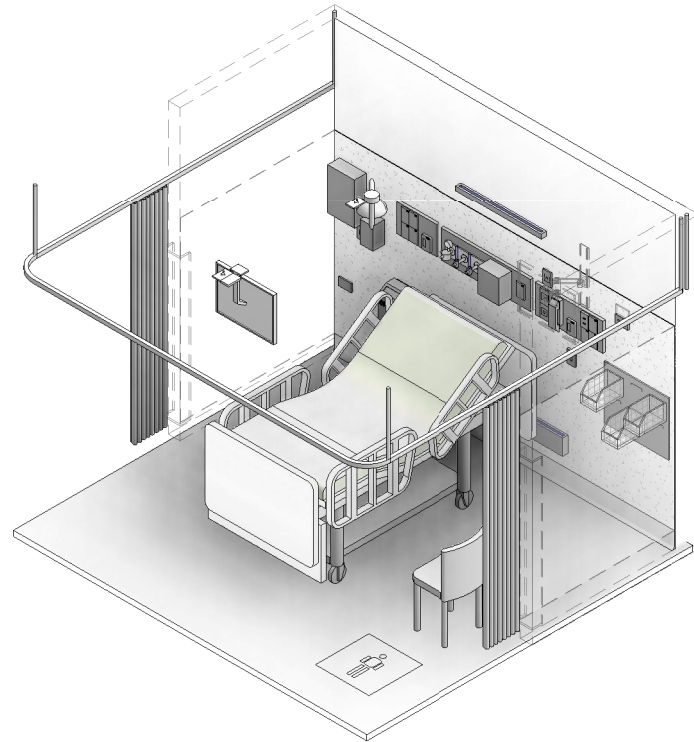
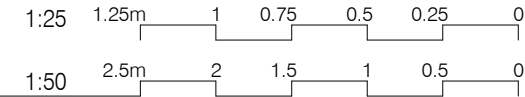
AUSTRALASIAN HFG STANDARD COMPONENTS

Room Layout Sheet

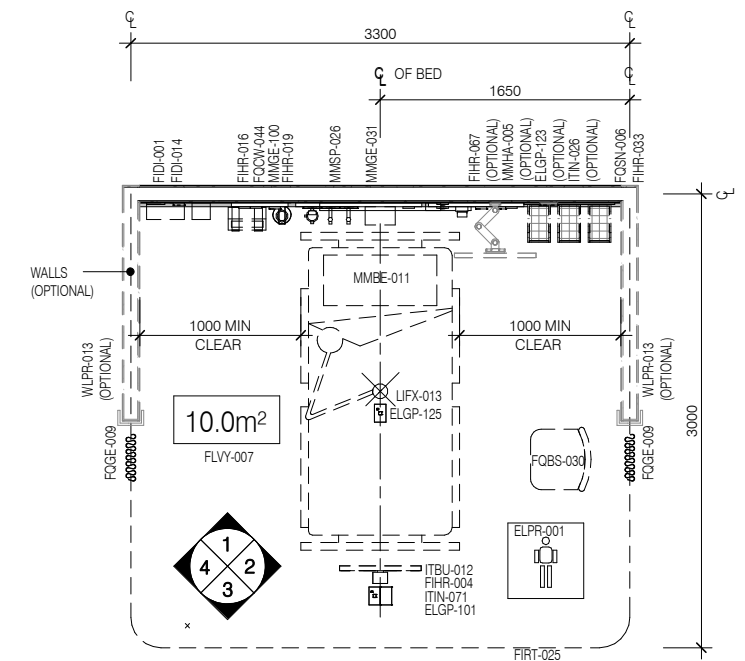
RLS Room Code: **PBTR-NA**

Room Name:

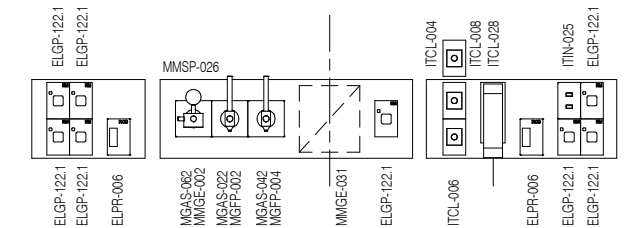
PATIENT BAY, EMERGENCY - NON ACUTE TREATMENT



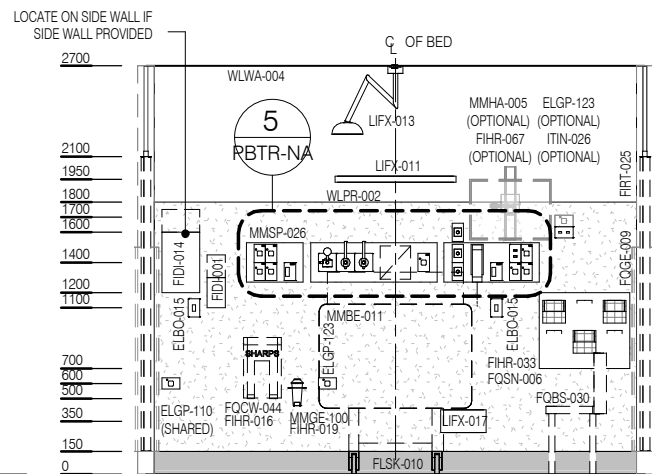
| CODE | DESCRIPTION |
|------------|--|
| ELBO-015 | SWITCH: light, single |
| ELGP-101 | GPO: single, ceiling mounted |
| ELGP-110 | GPO: single, wall mounted, cleaner |
| ELGP-122.1 | GPO: emergency power, single, on services panel (V) |
| ELGP-123 | GPO: emergency power, single, wall mounted |
| ELGP-125 | GPO: emergency power, single, ceiling mounted |
| ELPR-001 | BODY PROTECTED ELECTRICAL AREA |
| ELPR-006 | RCD: residual current device |
| FIDI-001 | DISPENSER: alcohol based hand rub |
| FIDI-014 | DISPENSER: disposable glove |
| FIHR-004 | BRACKET: for display screen, ceiling mounted |
| FIHR-016 | BRACKET: for sharps bin |
| FIHR-019 | BRACKET: for suction bottle |
| FIHR-033 | PANEL: for storage bins, wall mount |
| FIHR-067 | BRACKET: for monitor, wall mounted, articulated, adj height |
| FIRT-025 | TRACK: curtain, bedscreen, U shaped |
| FLSK-010 | SKIRTING: vinyl, floor vinyl coved, 150H, prefinished |
| FLVY-007 | FLOOR FINISH: vinyl, seamless, coved, standard slip resistant |
| FOBS-030 | CHAIR: visitor, patient |
| FOCW-044 | BIN: waste, sharps, wall mounted |
| FOGE-009 | CURTAIN: bed screen |
| FOSN-006 | BIN: storage bins, for wall mounted panel |
| ITBU-012 | DISPLAY SCREEN: patient entertainment system |
| ITCL-004 | BUTTON: nurse call, emergency |
| ITCL-006 | BUTTON: nurse call, patient to staff |
| ITCL-008 | BUTTON: nurse call, staff assist |
| ITCL-028 | HANDSET: nurse call, with patient to staff call button |
| ITIN-025 | OUTLET: data, double RJ45, on services panel |
| ITIN-026 | OUTLET: data, double RJ45, wall mounted |
| ITIN-071 | OUTLET: MATV, ceiling mounted |
| LIFX-011 | LIGHT: reading light |
| LIFX-013 | LIGHT: procedure, ceiling mounted, small |
| LIFX-017 | LIGHT: night light |
| MGAS-022 | OUTLET: medical air (MA), on services panel |
| MGAS-042 | OUTLET: oxygen (O2), on services panel |
| MGAS-062 | OUTLET: suction, on services panel |
| MGFP-002 | FLOWMETER: medical air |
| MGFP-004 | FLOWMETER: oxygen |
| MMBE-011 | BED: patient, emergency, electric |
| MMGE-002 | ADAPTER: suction |
| MMGE-031 | DIAGNOSTIC SET: wall mounted |
| MMGE-100 | SUCTION BOTTLE |
| MMHA-005 | MONITOR: patient, cardiac |
| MMSP-026 | SERVICES PANEL: wall mounted |
| WLPR-002 | WALL PROTECTION: bed protection wall panel, composite, laminate finish |
| WLPR-013 | WALL PROTECTION: corner guards, to 1500 AFFL, prefinished PVC |
| WLWA-004 | WALL FINISH: paint, acrylic, washable |



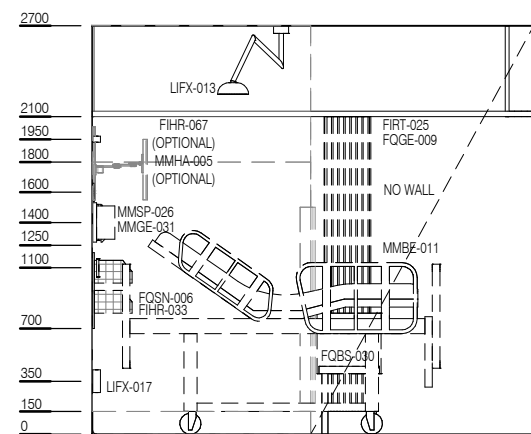
PLAN



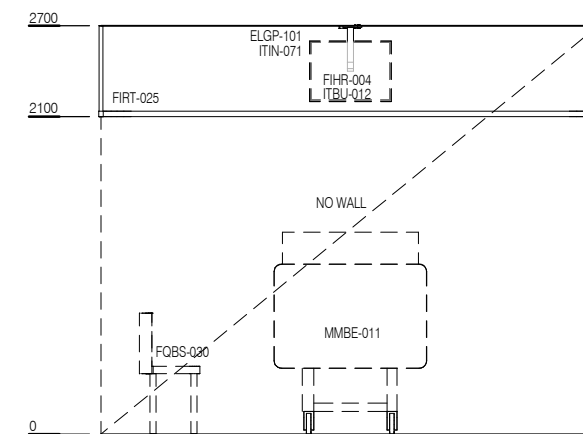
ELEVATION 5 (1 : 25 @ A3)



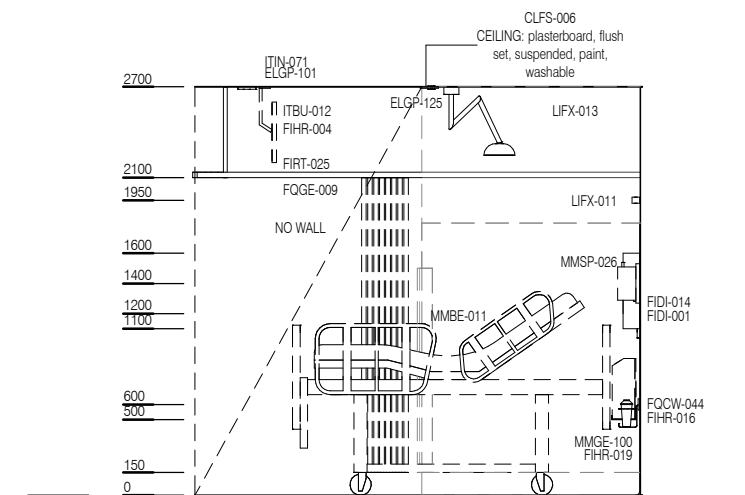
ELEVATION 1



ELEVATION 2



ELEVATION 3



ELEVATION 4



| REV | DESCRIPTION | DATE |
|-----|---|------------|
| 5 | RLS Reviewed and Updated inc. Name Change | 29.05.2019 |

FOR GUIDANCE

| SCALE | RLS Room Code | REV |
|-------------|---------------|-----|
| 1 : 50 @ A3 | PBTR-NA | 5 |