

AUSTRALASIAN HFG STANDARD COMPONENTS

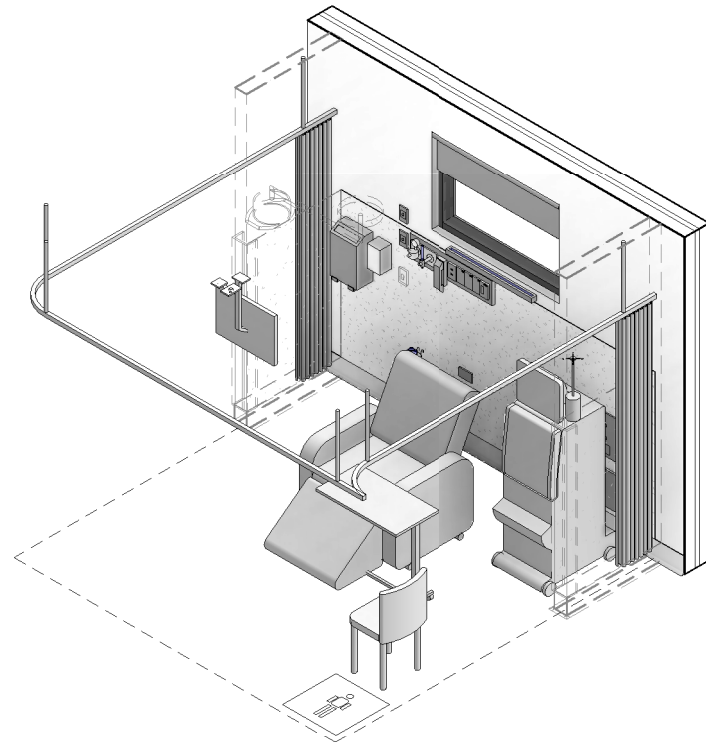
Room Layout Sheet

RLS Room Code: **PBTR-RD-A**

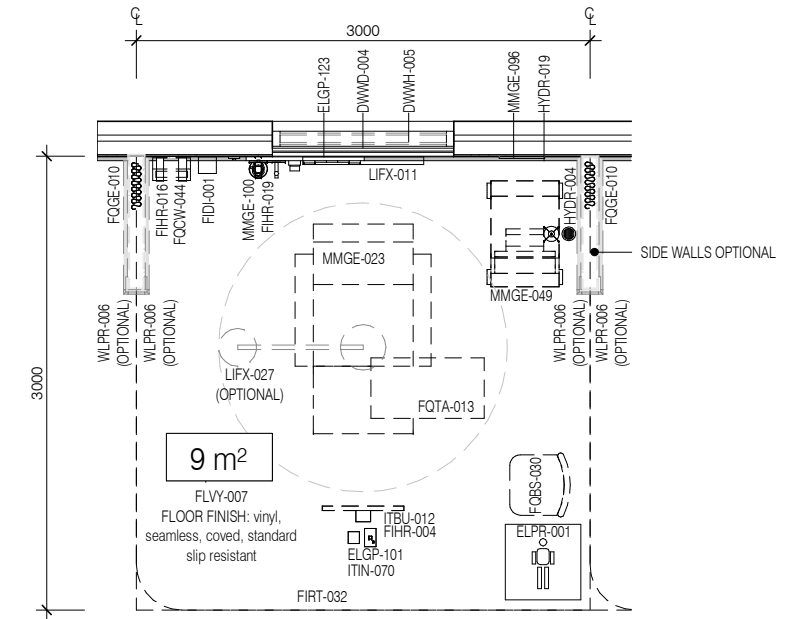


Room Name:

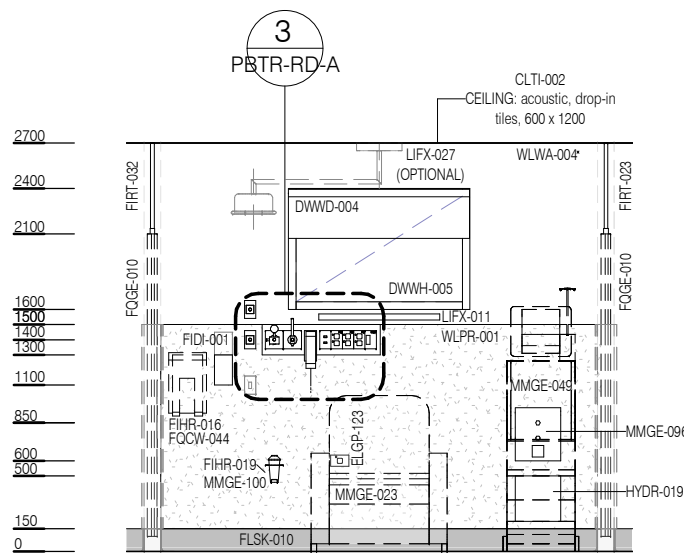
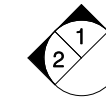
PATIENT BAY - RENAL DIALYSIS, CHAIR



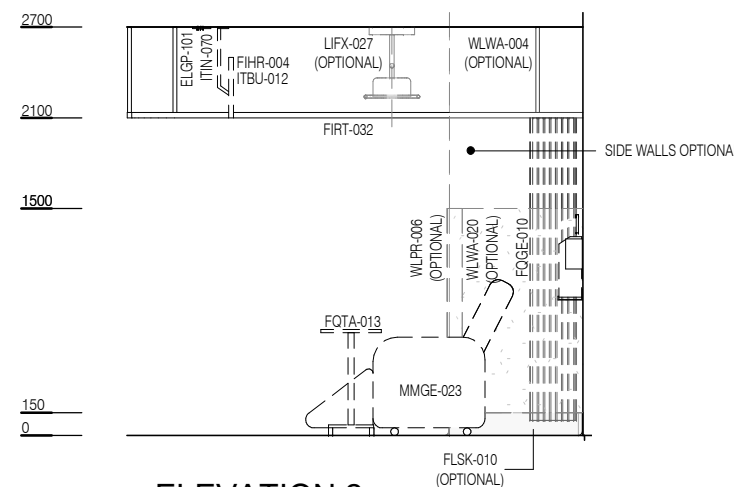
CODE	DESCRIPTION
DWWD-004	BLIND: roller
DWWH-005	WINDOW
ELBO-015	SWITCH: light, single
ELGP-101	GPO: single, ceiling mounted
ELGP-123	GPO: emergency power, single, wall mounted
ELGP-222	GPO: emergency power, double, on services panel
ELPR-001	BODY PROTECTED ELECTRICAL AREA
ELPR-006	RCD: residual current device
FIDI-001	DISPENSER: alcohol based hand rub
FIHR-004	BRACKET: for display screen, ceiling mounted
FIHR-016	BRACKET: for sharps bin
FIHR-019	BRACKET: for suction bottle
FIRT-032	TRACK: curtain, privacy, L shaped
FLSK-010	SKIRTING: vinyl, floor vinyl coved, 150H, prefinished
FLY-007	FLOOR FINISH: vinyl, seamless, coved, standard slip resistant
FQBS-030	CHAIR: visitor, patient
FQCV-044	BIN: waste, sharps, wall mounted
FQGE-010	CURTAIN: privacy screen
FQTA-013	TABLE: overbed
HYDR-004	DRAIN: floor waste
HYDR-019	ACCESS PANEL: waterless trap
ITBU-012	DISPLAY SCREEN: patient entertainment system
ITCL-004	BUTTON: nurse call, emergency
ITCL-008	BUTTON: nurse call, staff assist
ITCL-028	HANDSET: nurse call, with patient to staff call button
ITIN-025	OUTLET: data, double RJ45, on services panel
ITIN-070	OUTLET: MATV
LIFX-011	LIGHT: reading light
LIFX-027	LIGHT: examination, ceiling mounted
MGAS-042	OUTLET: oxygen (O2), on services panel
MGAS-062	OUTLET: suction, on services panel
MGFP-004	FLOWMETER: oxygen
MMGE-002	ADAPTER: suction
MMGE-023	CHAIR: recliner, clinical, electric
MMGE-049	MACHINE: dialysis
MMGE-096	STATION: combination dialysis connection point and waste water tundish
MMGE-100	SUCTION BOTTLE
MMSP-026	SERVICES PANEL: wall mounted
WLPR-001	WALL PROTECTION: bed protection wall panel
WLPR-006	WALL PROTECTION: corner guards
WLWA-004	WALL FINISH: paint, acrylic, washable
WLWA-020	WALL FINISH: vinyl, to 1500 AFFL



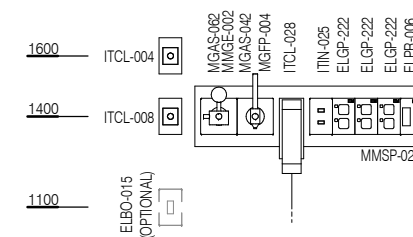
PLAN



ELEVATION 1



ELEVATION 2



ELEVATION 3 (1 : 25 @ A3)