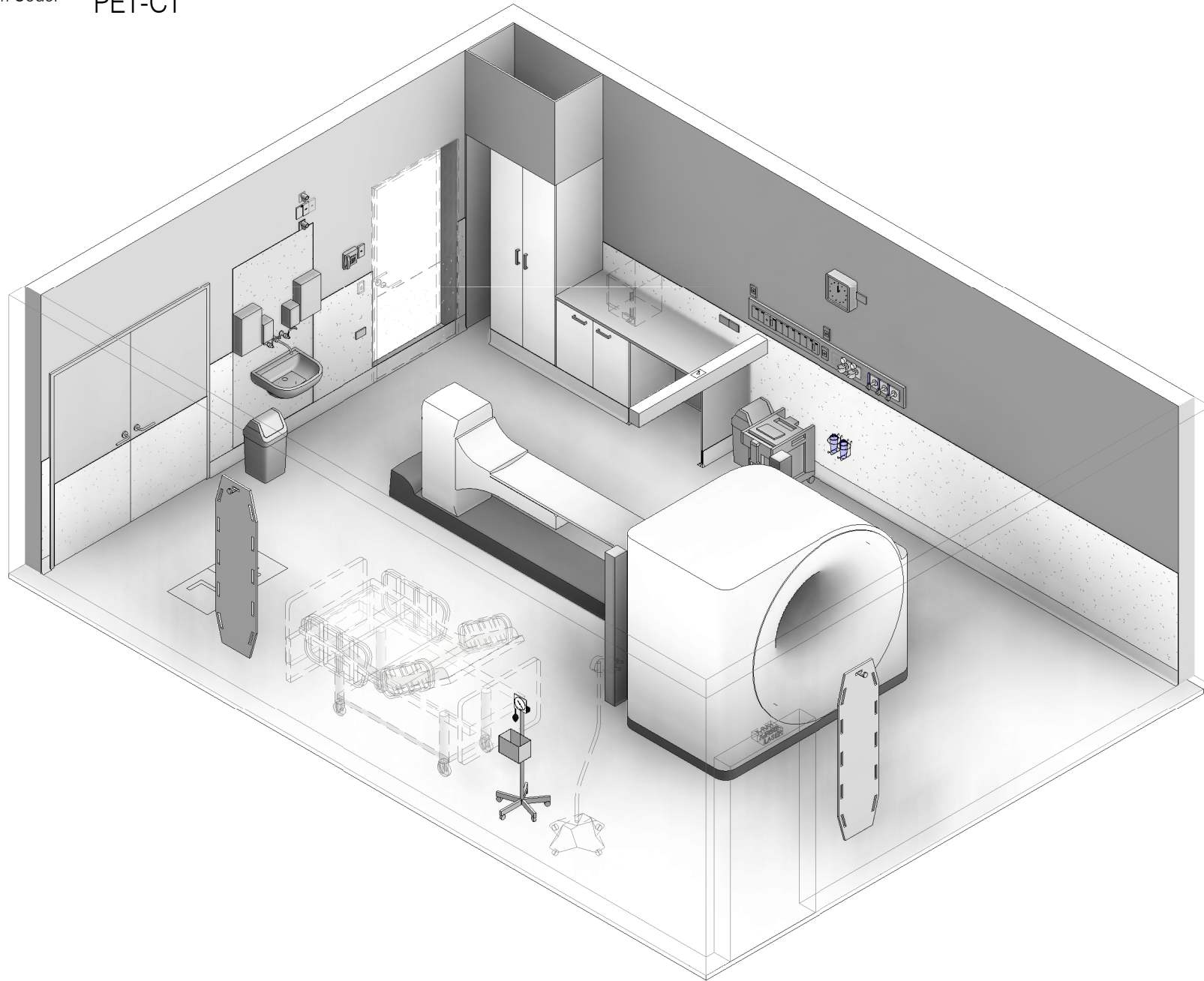


AUSTRALASIAN HFG STANDARD COMPONENTS

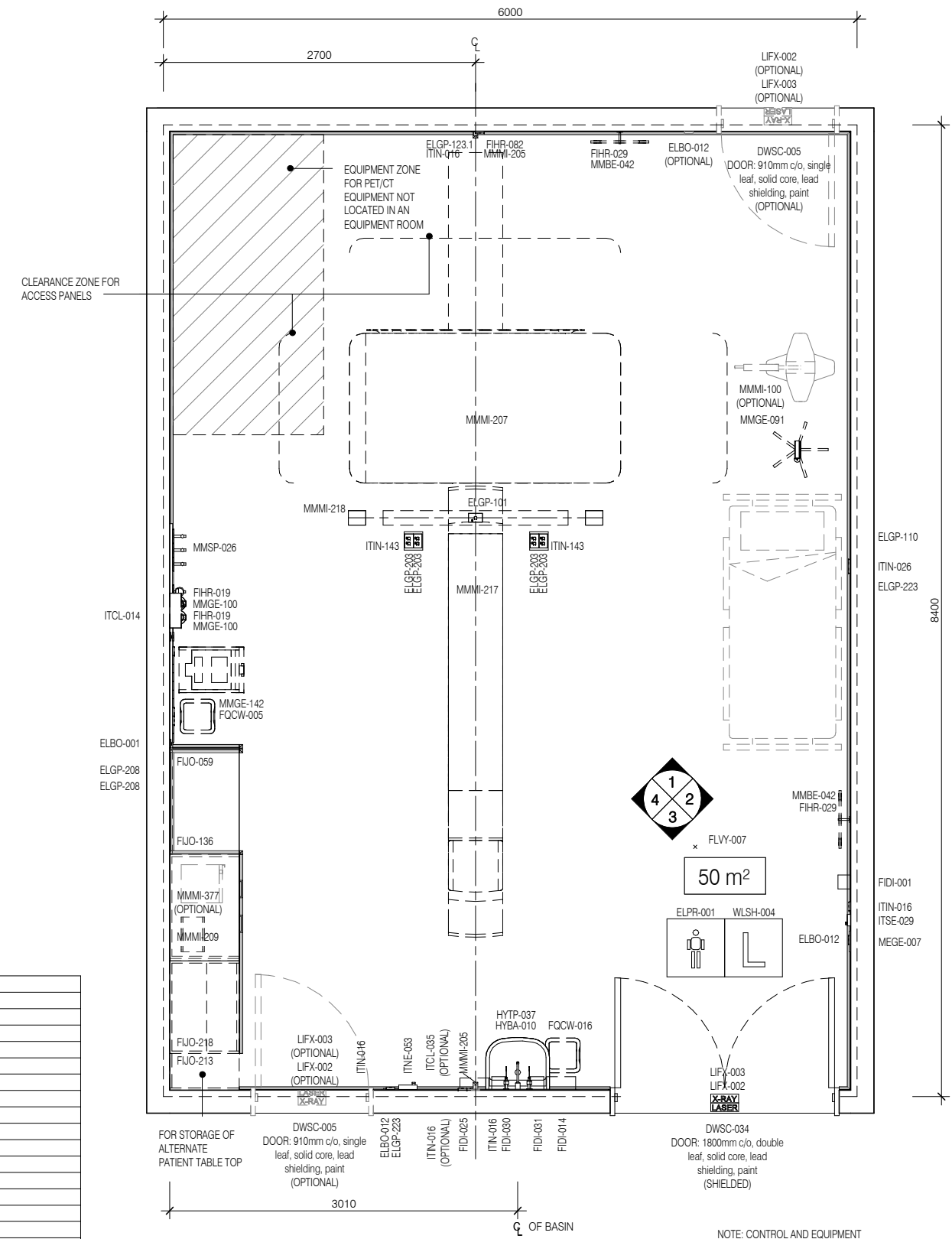
Room Layout Sheet

RLS Room Code: **PET-CT**



Room Name:

PET-CT IMAGING ROOM



PLAN

NOTE: CONTROL AND EQUIPMENT ROOM MUST BE LOCATED IN CLOSE PROXIMITY AND IN ALIGNMENT WITH PET/CT VENDOR REQUIREMENTS.

	DESCRIPTION
DWPR-005	DOOR PROTECTION: protection plate to 900 AFFL
ELBO-001	BUTTON: emergency stop
ELBO-012	SWITCH: light, dimmer
ELGP-101	GPO: single, ceiling mounted
ELGP-109	GPO: single, wall mounted
ELGP-110	GPO: single, wall mounted, cleaner
ELGP-122.1	GPO: emergency power, single, on services panel (V)
ELGP-123.1	GPO: emergency power, single, wall mounted (V)
ELGP-133	GPO: UPS, single, on services panel
ELGP-203	GPO: double, in floorbox
ELGP-208	GPO: double, wall mounted
ELGP-223	GPO: emergency power, double, wall mounted
ELPR-001	BODY PROTECTED ELECTRICAL AREA
ELPR-006	RCD: residual current device
ELPR-007	UPS: status indicator
FIDI-001	DISPENSER: alcohol based hand rub
FIDI-014	DISPENSER: disposable glove
FIDI-025	DISPENSER: paper/hand towel
FIDI-030	DISPENSER: soap
FIDI-031	DISPENSER: soap antiseptic
FIHR-019	BRACKET: for suction bottle
FIHR-029	HOOK: equipment
FIHR-082	BRACKET: for observation camera, MRI compatible, wall mounted
FIJO-059	BENCH TOP: 600D, joinery under, laminate finish

	DESCRIPTION
FIJO-136	CUPBOARD: underbench, double door, adj shelves, lockable
FIJO-212	BULKHEAD: joinery
FIJO-213	PANEL: joinery carcass end
FIJO-218	CUPBOARD: tall, double door, adj shelves, lockable, heavy duty
FLSK-010	SKIRTING: vinyl, floor vinyl coved, 150H, prefinished
FLVY-007	FLOOR FINISH: vinyl, seamless, coved, standard slip resistant
FQCW-005	BIN: waste, clinical, 20L
FQCW-016	BIN: waste, general, 20L
HYBA-010	BASIN: handwash, Type B
HYTP-037	TAPWARE: mixer, elbow levers
ITCL-004	BUTTON: nurse call, emergency
ITCL-008	BUTTON: nurse call, staff assist
ITCL-014	CLOCK: analogue, electric
ITCL-035	CAMERA: respiratory gating
ITIN-016	OUTLET: data, single RJ45, wall mounted
ITIN-026	OUTLET: data, double RJ45, wall mounted
ITIN-143	FLOORBOX: for power, data, AV, flush mounted
ITNE-053	TELEPHONE: handset, wall mount, handsfree
ITSE-025	DOOR RELEASE: access control, remote activation
ITSE-029	INTERCOM: audio, wall mount
LIFX-002	LIGHT: illuminated sign, "X-Ray in Use"
LIFX-003	LIGHT: illuminated sign, "Laser in Use"
MEGE-007	CONTROL PANEL: temperature
MGAS-022	OUTLET: medical air (MA), on services panel

	DESCRIPTION
MGAS-032	OUTLET: nitrous oxide (N2O), on services panel
MGAS-042	OUTLET: oxygen (O2), on services panel
MGAS-053	OUTLET: scavange, on services panel
MGAS-062	OUTLET: suction, on services panel
MGFP-002	FLOWMETER: medical air
MGFP-004	FLOWMETER: oxygen
MMBE-042	SLIDE: patient
MMGE-002	ADAPTER: suction
MMGE-091	SPHYGMOMANOMETER: portable
MMGE-100	SUCTION BOTTLE
MMGE-142	TROLLEY: sharps bin
MMMI-100	INJECTOR: contrast, CT
MMMI-205	CAMERA: patient observation, PET/CT
MMMI-207	DEVICE: imaging, PET/CT
MMMI-209	PHANTOM: PET/CT
MMMI-217	TABLE: patient, fixed, PET/CT
MMMI-218	LASER: positioning lights, PET/CT
MMMI-377	WARMER: contrast
MMSP-026	SERVICES PANEL: wall mounted
WLSH-004	SHIELDING: lead lining
WLWA-004	WALL FINISH: paint, acrylic, washable
WLWA-010	WALL FINISH: splashback, vinyl
WLWA-025	WALL FINISH: vinyl, to 1200 AFFL



REV	DESCRIPTION	DATE
1	First Issue	29.05.2019

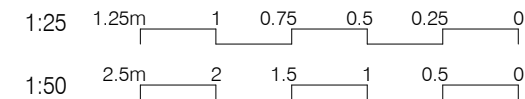
FOR GUIDANCE

SCALE	RLS Room Code	REV
1 : 50 @ A3	PET-CT	1

AUSTRALASIAN HFG STANDARD COMPONENTS

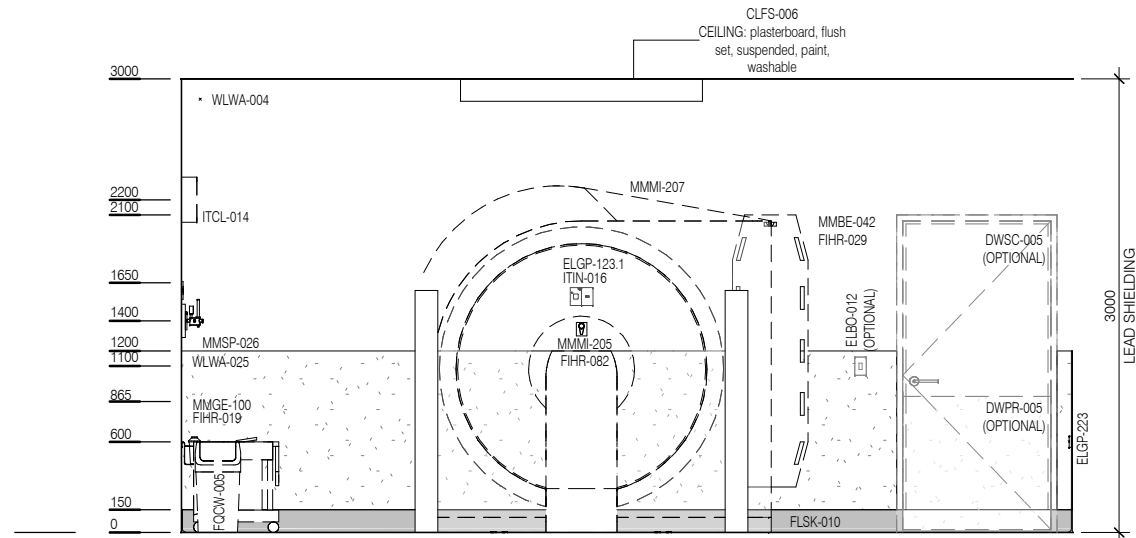
Room Layout Sheet

RLS Room Code: **PET-CT**

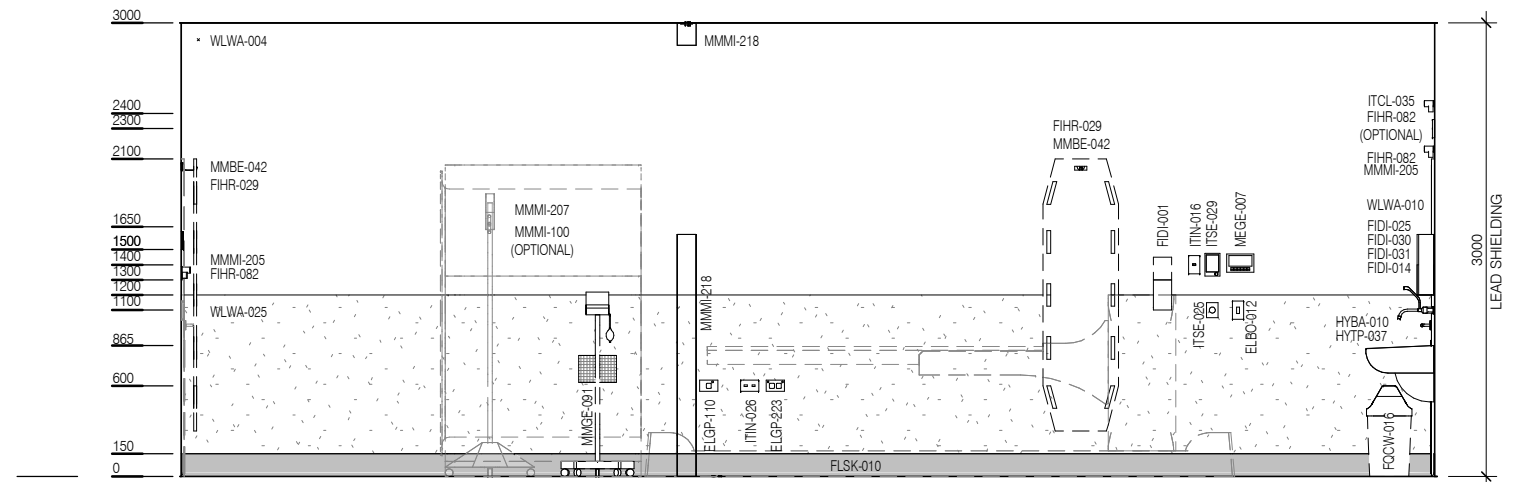


Room Name:

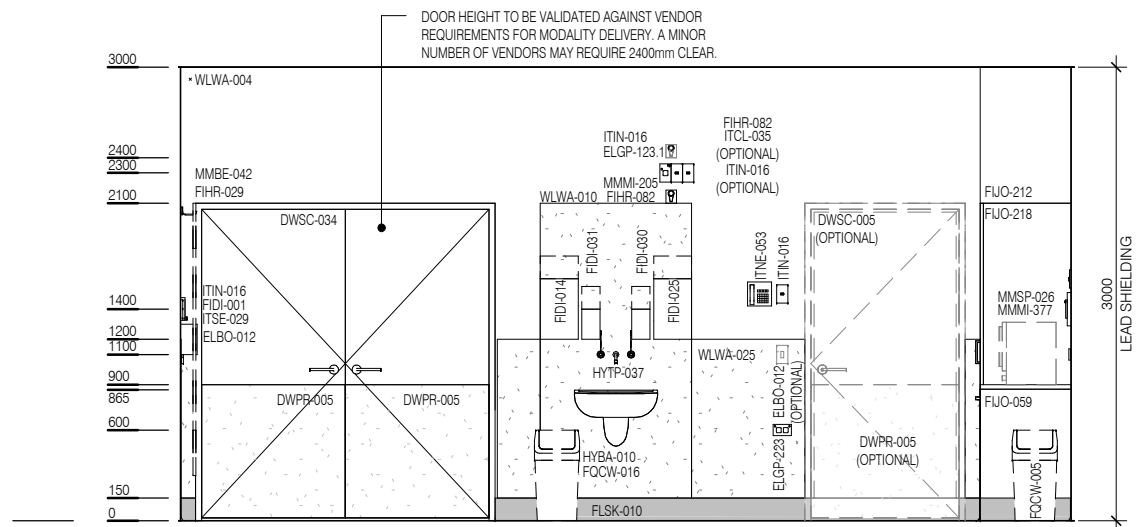
PET-CT IMAGING ROOM



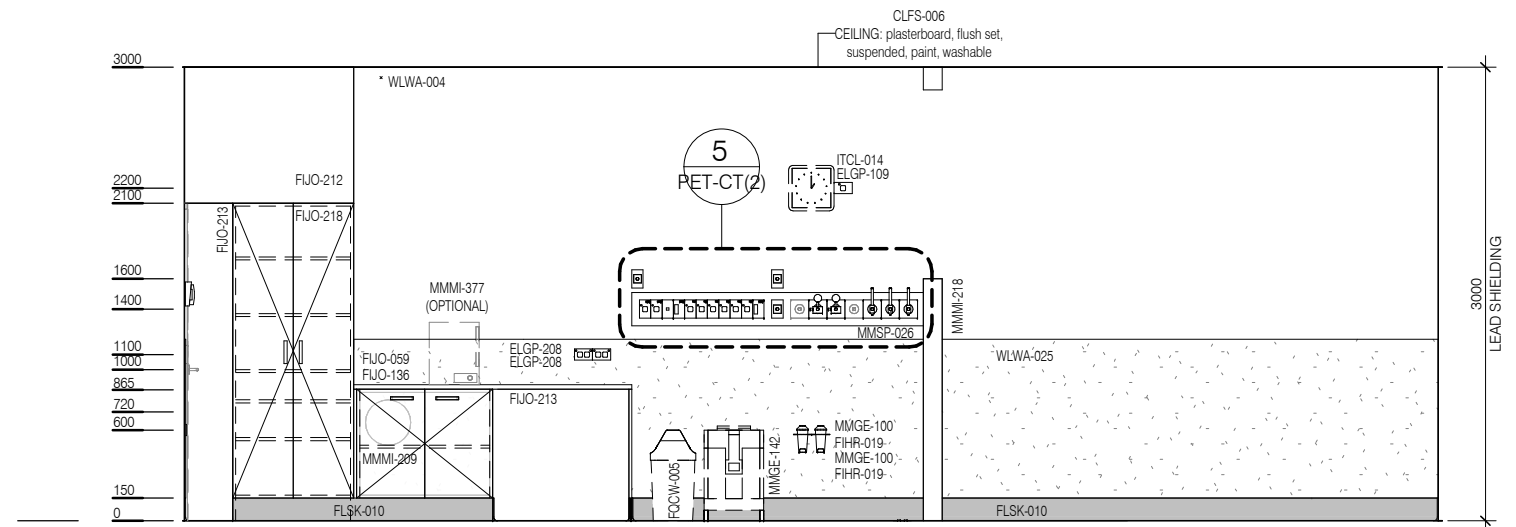
ELEVATION 1



ELEVATION 2



ELEVATION 3

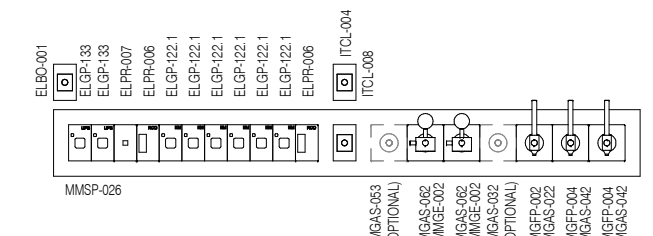


ELEVATION 4

DESCRIPTION	DESCRIPTION
DWPR-005	DOOR PROTECTION: protection plate to 900 AFFL
ELBO-001	BUTTON: emergency stop
ELBO-012	SWITCH: light, dimmer
ELGP-101	GPO: single, ceiling mounted
ELGP-109	GPO: single, wall mounted
ELGP-110	GPO: single, wall mounted, cleaner
ELGP-122.1	GPO: emergency power, single, on services panel (V)
ELGP-123.1	GPO: emergency power, single, wall mounted (V)
ELGP-133	GPO: UPS, single, on services panel
ELGP-203	GPO: double, in floorbox
ELGP-208	GPO: double, wall mounted
ELGP-223	GPO: emergency power, double, wall mounted
ELPR-001	BODY PROTECTED ELECTRICAL AREA
ELPR-006	RCD: residual current device
ELPR-007	UPS: status indicator
FIDI-001	DISPENSER: alcohol based hand rub
FIDI-014	DISPENSER: disposable glove
FIDI-025	DISPENSER: paper/hand towel
FIDI-030	DISPENSER: soap
FIDI-031	DISPENSER: soap antiseptic
FIHR-019	BRACKET: for suction bottle
FIHR-029	HOOK: equipment
FIHR-082	BRACKET: for observation camera, MRI compatible, wall mounted
FJUO-059	BENCH TOP: 600D, joinery under, laminate finish

DESCRIPTION	DESCRIPTION
FJUO-136	CUPBOARD: underbench, double door, adj shelves, lockable
FJUO-212	BULKHEAD: joinery
FJUO-213	PANEL: joinery carcass end
FJUO-218	CUPBOARD: tall, double door, adj shelves, lockable, heavy duty
FLSK-010	SKIRTING: vinyl, floor vinyl coved, 150H, prefinished
FLVY-007	FLOOR FINISH: vinyl, seamless, coved, standard slip resistant
FOCW-005	BIN: waste, clinical, 20L
FOCW-016	BIN: waste, general, 20L
HYBA-010	BASIN: handwash, Type B
HYTP-037	TAPWARE: mixer, elbow levers
ITCL-004	BUTTON: nurse call, emergency
ITCL-008	BUTTON: nurse call, staff assist
ITCL-014	CLOCK: analogue, electric
ITCL-035	CAMERA: respiratory gating
ITIN-016	OUTLET: data, single RJ45, wall mounted
ITIN-026	OUTLET: data, double RJ45, wall mounted
ITIN-143	FLOORBOX: for power, data, AV, flush mounted
ITNE-053	TELEPHONE: handset, wall mount, handsfree
ITSE-025	DOOR RELEASE: access control, remote activation
ITSE-029	INTERCOM: audio, wall mount
LIFX-002	LIGHT: illuminated sign, "X-Ray in Use"
LIFX-003	LIGHT: illuminated sign, "Laser in Use"
MEGE-007	CONTROL PANEL: temperature
MGAS-022	OUTLET: medical air (MA), on services panel

DESCRIPTION	DESCRIPTION
MGAS-032	OUTLET: nitrous oxide (N2O), on services panel
MGAS-042	OUTLET: oxygen (O2), on services panel
MGAS-053	OUTLET: scavenge, on services panel
MGAS-062	OUTLET: suction, on services panel
MGFP-002	FLOWMETER: medical air
MGFP-004	FLOWMETER: oxygen
MMBE-042	SLIDE: patient
MMGE-002	ADAPTER: suction
MMGE-091	SPHYGMOMANOMETER: portable
MMGE-100	SUCTION BOTTLE
MMGE-142	TROLLEY: sharps bin
MMMI-100	INJECTOR: contrast, CT
MMMI-205	CAMERA: patient observation, PET/CT
MMMI-207	DEVICE: imaging, PET/CT
MMMI-209	PHANTOM: PET/CT
MMMI-217	TABLE: patient, fixed, PET/CT
MMMI-218	LASER: positioning lights, PET/CT
MMMI-377	WARMER: contrast
MMSP-026	SERVICES PANEL: wall mounted
WLSH-004	SHIELDING: lead lining
WLWA-004	WALL FINISH: paint, acrylic, washable
WLWA-010	WALL FINISH: splashback, vinyl
WLWA-025	WALL FINISH: vinyl, to 1200 AFFL



ELEVATION 5 (1 : 25 @ A3)



REV	DESCRIPTION	DATE
1	First Issue	29.05.2019

FOR GUIDANCE

SCALE	RLS Room Code	REV
1 : 50 @ A3	PET-CT	1