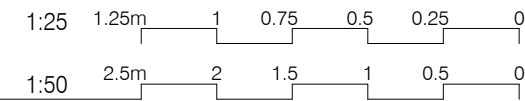


# AUSTRALASIAN HFG STANDARD COMPONENTS

Room Layout Sheet

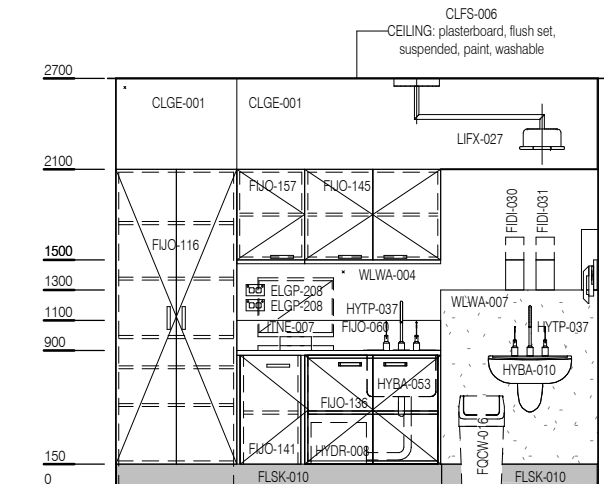
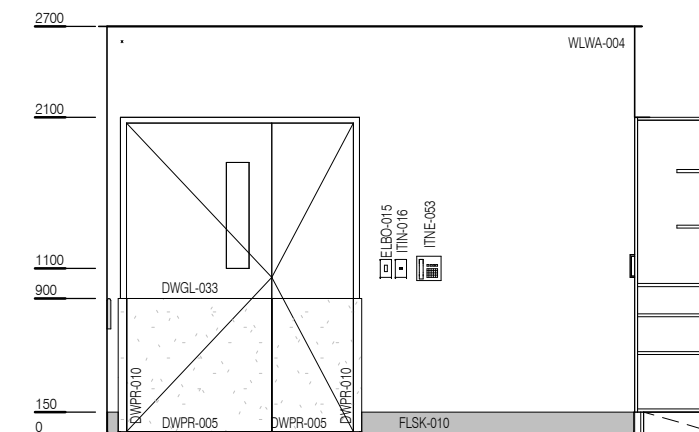
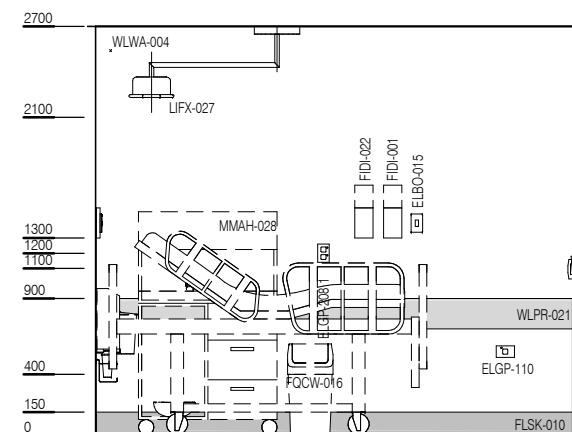
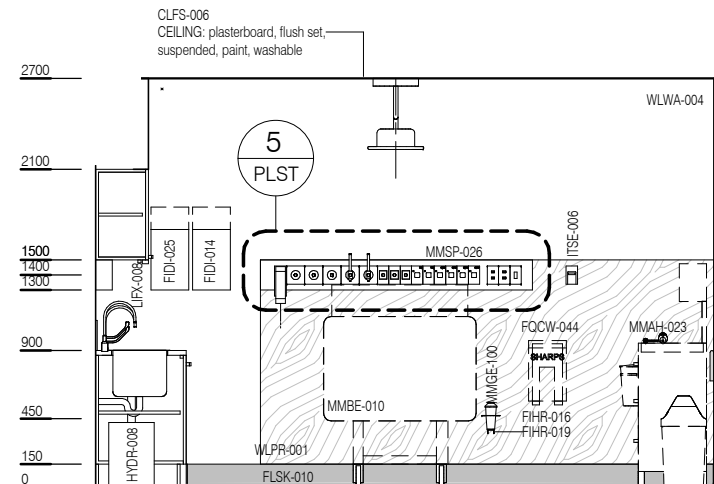
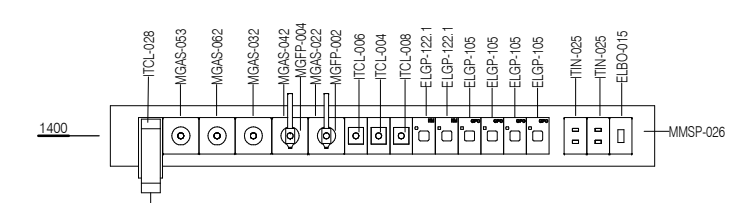
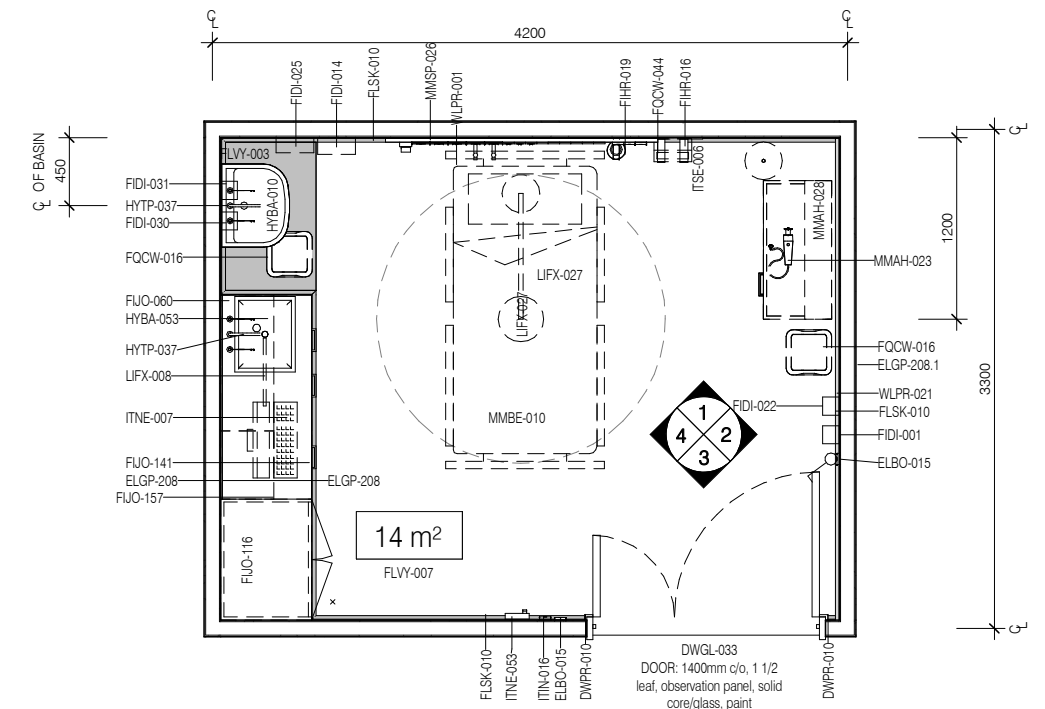
RLS Room Code: **PLST**



Room Name:

**PLASTER ROOM**

CODE	DESCRIPTION
CLGE-001	CEILING: plasterboard, bulkhead, paint
DWPR-005	DOOR PROTECTION: protection plate to 900 AFFL
DWPR-010	DOOR PROTECTION: to door frame, PVC, prefinished
ELBO-015	SWITCH: light, single
ELGP-105	GPO: single, on services panel
ELGP-110	GPO: single, wall mounted, cleaner
ELGP-122.1	GPO: emergency power, single, on services panel (V)
ELGP-208	GPO: double, wall mounted
FIDI-001	DISPENSER: alcohol based hand rub
FIDI-014	DISPENSER: disposable glove
FIDI-022	DISPENSER: moisturiser
FIDI-025	DISPENSER: paper/hand towel
FIDI-030	DISPENSER: soap
FIDI-031	DISPENSER: soap antiseptic
FIHR-016	BRACKET: for sharps bin
FIHR-019	BRACKET: for suction bottle
FJO-060	BENCH TOP: 600D, joinery under, stainless steel lipped
FJO-116	CUPBOARD: tall, double door, adj shelves
FJO-136	CUPBOARD: underbench, double door, adj shelves, lockable
FJO-141	CUPBOARD: underbench, single door, adj shelves, lockable
FJO-145	CUPBOARD: wall mount, double door, adj shelves, lockable
FJO-157	CUPBOARD: wall mount, single door, adj shelves, lockable
FLSK-010	SKIRTING: vinyl, floor vinyl coved, 150H, prefinished
FLVY-003	FLOOR FINISH: vinyl, seamless, coved, non slip
FLVY-007	FLOOR FINISH: vinyl, seamless, coved, standard slip resistant
FOCW-016	BIN: waste, general, 20L
FOCW-044	BIN: waste, sharps, wall mounted
HYBA-010	BASIN: handwash, Type B
HYBA-053	SINK: single, 450 x 350 x 300D
HYDR-008	TRAP: plaster
HYTP-037	TAPWARE: mixer, elbow levers
ITCL-004	BUTTON: nurse call, emergency
ITCL-006	BUTTON: nurse call, patient to staff
ITCL-008	BUTTON: nurse call, staff assist
ITCL-028	HANDSET: nurse call, with patient to staff call button
ITIN-016	OUTLET: data, single RJ45, wall mounted
ITIN-025	OUTLET: data, double RJ45, on services panel
ITNE-007	COMPUTER: desktop, with display screen
ITNE-053	TELEPHONE: handset, wall mount, handsfree
ITSE-006	BUTTON: duress, fixed
LIFX-008	LIGHT: task light, built in
LIFX-027	LIGHT: examination, ceiling mounted
MGAS-022	OUTLET: medical air (MA), on services panel
MGAS-032	OUTLET: nitrous oxide (N2O), on services panel
MGAS-042	OUTLET: oxygen (O2), on services panel
MGAS-053	OUTLET: scavenge, on services panel
MGAS-062	OUTLET: suction, on services panel
MGFP-002	FLOWMETER: medical air
MGFP-004	FLOWMETER: oxygen
MMAH-023	SAW: plaster
MMAH-028	TROLLEY: plaster
MMBE-010	BED: patient, electric with mattress
MMGE-100	SUCTION BOTTLE
MMSP-026	SERVICES PANEL: wall mounted
WLPR-001	WALL PROTECTION: bed protection wall panel
WLPR-021	WALL PROTECTION: crash rail, at 900 AFFL
WLWA-004	WALL FINISH: paint, acrylic, washable
WLWA-007	WALL FINISH: splashback



REV	DESCRIPTION	DATE
4	Coding and naming updated	20.03.2017

FOR GUIDANCE

SCALE	RLS Room Code	REV
1 : 50 @ A3	PLST	4

