

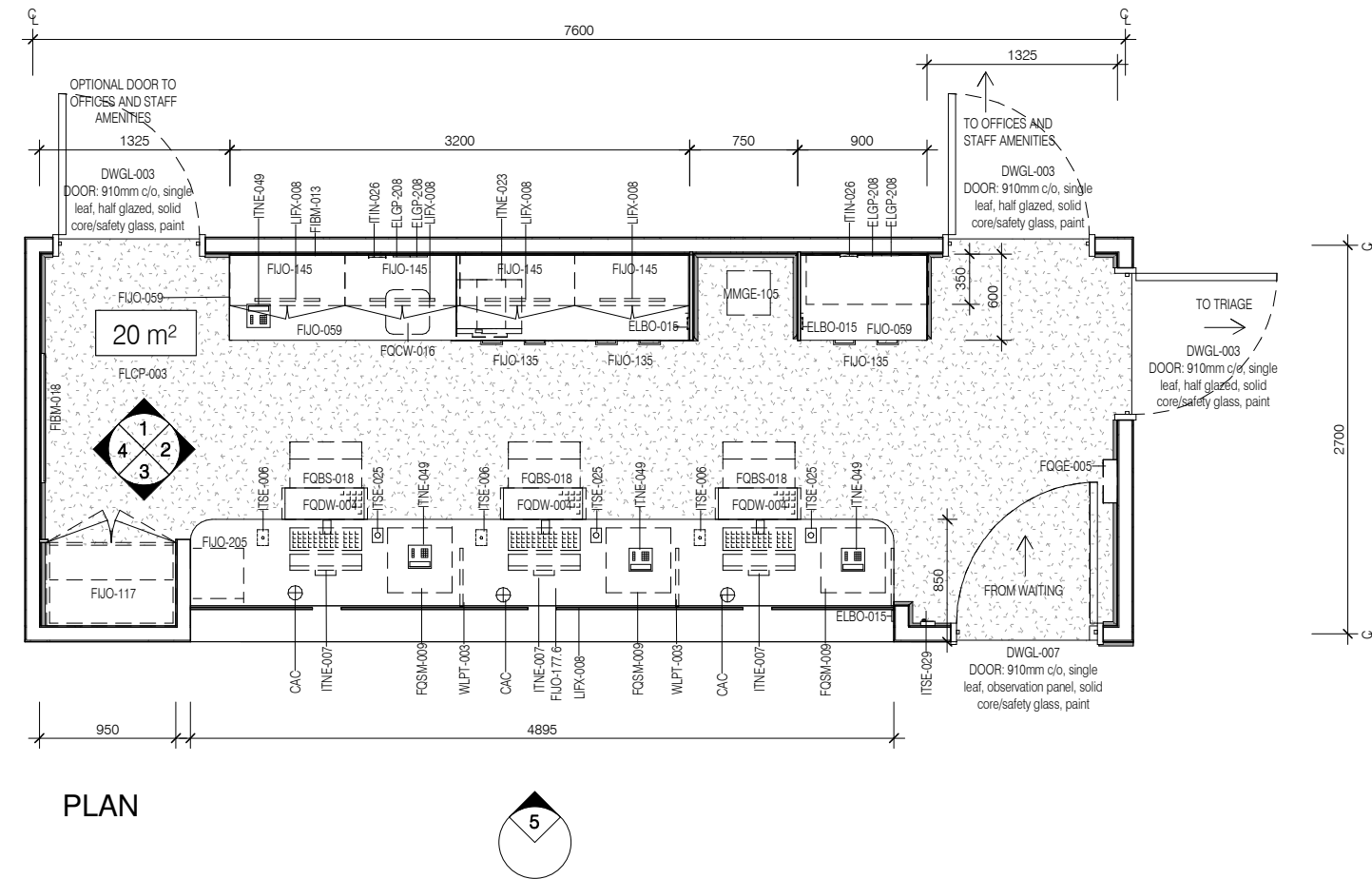
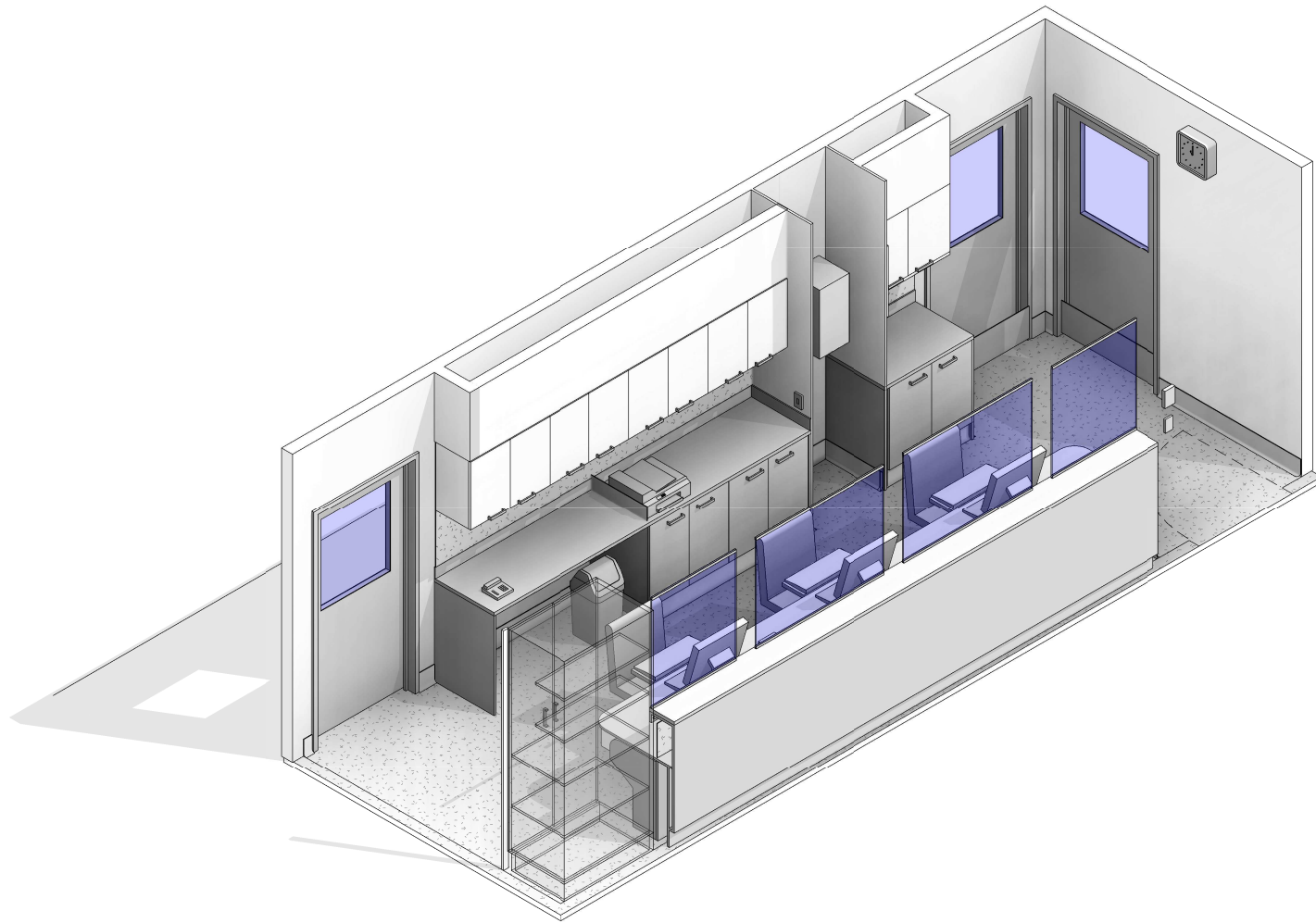
# AUSTRALASIAN HFG STANDARD COMPONENTS

Room Layout Sheet

RLS Room Code: REC-E

Room Name:

1:50 2.5m 2 1.5 1 0.5 0  
RECEPTION (EMERGENCY), 20m<sup>2</sup>



PLAN

| CODE      | DESCRIPTION   |
|-----------|---|
| CAC       | Cable access cap  |
| DWPR-003  | DOOR PROTECTION: kickplate, to 300 AFFL, vinyl, prefinished |
| ELBO-015  | SWITCH: light, single                                       |
| ELGP-208  | GPO: double, wall mounted                                   |
| FIBM-013  | NOTICEBOARD: fixed, fabric covered                          |
| FIBM-018  | WHITEBOARD: fixed   |
| FUO-059   | BENCH TOP: 600D, joinery under, laminate finish             |
| FUO-117   | CUPBOARD: tall, double door, adj shelves, lockable          |
| FUO-143   | CUPBOARD: underbench, double door, adj shelves              |
| FUO-145   | CUPBOARD: wall mount, double door, adj shelves, lockable    |
| FUO-177.6 | JOINERY UNIT: reception desk, high performance surfaces     |
| FUO-205   | CUPBOARD: drawer unit, lockable, single drawer              |
| FLCP-003  | FLOOR FINISH: carpet, broadloom, 48 oz., 90/10 wool/nylon   |
| FLSK-009  | SKIRTING: vinyl, feather edged, 150H, prefinished           |
| FOBS-018  | CHAIR: office, ergonomic                                    |
| FQCW-016  | BIN: waste, general, 20L                                    |

| CODE     | DESCRIPTION                                     |
|----------|---|
| FQDW-004 | KEYBOARD SHELF: drop down, for workstation      |
| FOGE-005 | CLOCK: analogue, battery operated               |
| FQSM-009 | PEDESTAL: mobile, filing unit, 660H             |
| ITIN-016 | OUTLET: data, single RJ45, wall mounted         |
| ITIN-026 | OUTLET: data, double RJ45, wall mounted         |
| ITNE-007 | COMPUTER: desktop, with display screen          |
| ITNE-023 | PRINTER: networked                              |
| ITNE-049 | TELEPHONE: handset, desktop                     |
| ITSE-006 | BUTTON: duress, fixed                           |
| ITSE-025 | DOOR RELEASE: access control, remote activation |
| ITSE-029 | INTERCOM: audio, wall mount                     |
| LIFX-008 | LIGHT: task light, built in                     |
| MMGE-105 | TRANSFER SYSTEM: document                       |
| WLPT-003 | PARTITION: laminate                             |
| WLPT-008 | SCREEN: security, safety glass                  |
| WLWA-004 | WALL FINISH: paint, acrylic, washable           |



| REV | DESCRIPTION               | DATE       |
|-----|---------------------------|------------|
| 5   | Coding and naming updated | 20.03.2017 |

FOR GUIDANCE

| SCALE       | RLS Room Code | REV |
|-------------|---------------|-----|
| 1 : 50 @ A3 | REC-E         | 5   |

# AUSTRALASIAN HFG STANDARD COMPONENTS

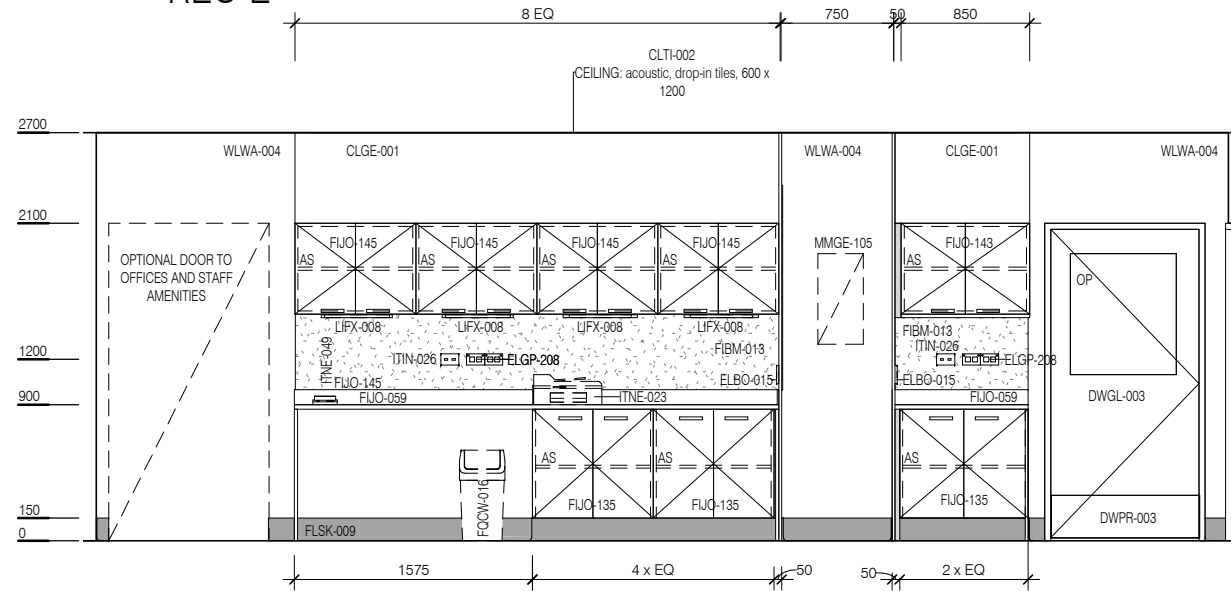
Room Layout Sheet

RLS Room Code: REC-E

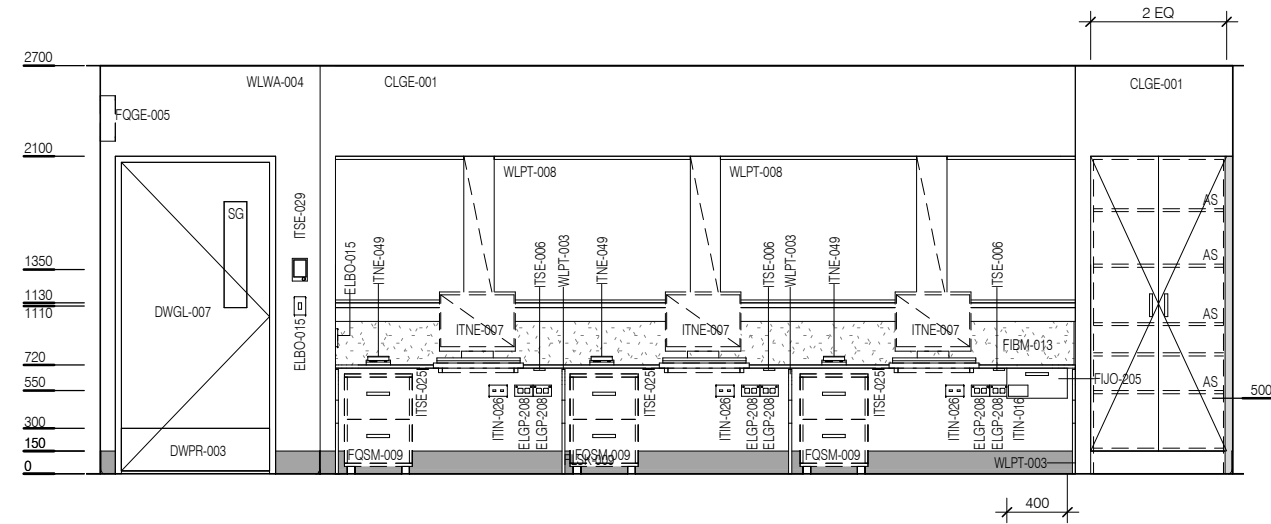
1:50 2.5m 2 1.5 1 0.5 0

Room Name:

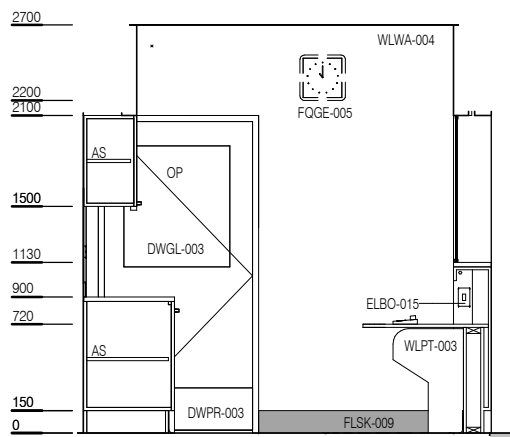
RECEPTION (EMERGENCY), 20m<sup>2</sup>



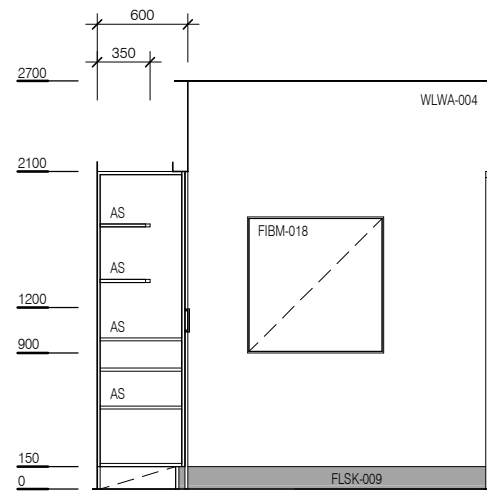
ELEVATION 1



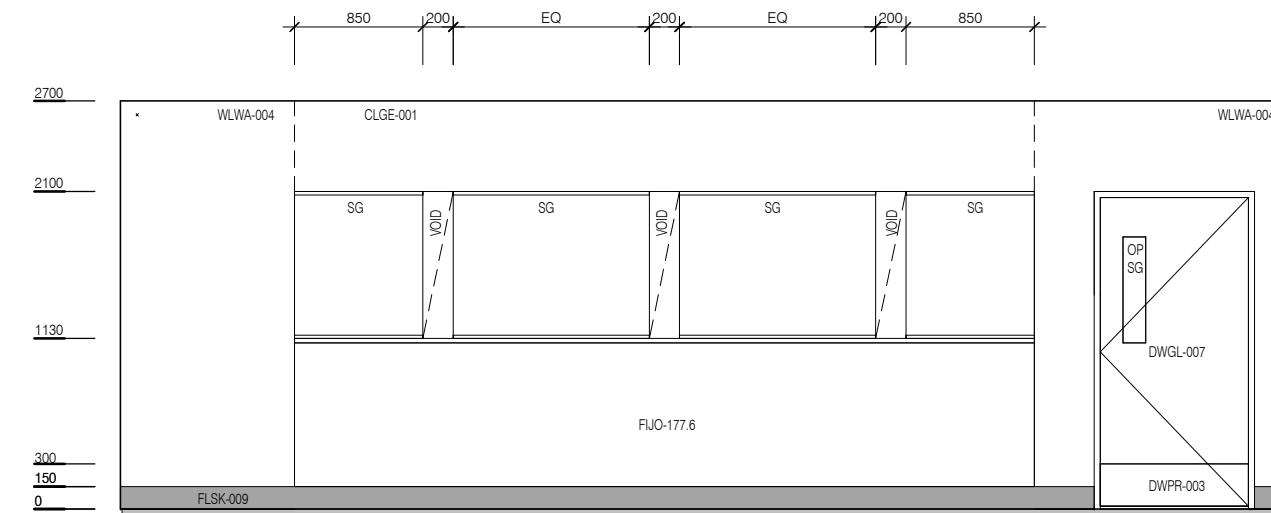
ELEVATION 3



ELEVATION 2



ELEVATION 4



ELEVATION 5

| CODE         | DESCRIPTION   |
|--------------|---|
| CAC          | Cable access cap  |
| DWPR-003     | DOOR PROTECTION: kickplate, to 300 AFFL, vinyl, prefinished |
| ELBO-015     | SWITCH: light, single                                       |
| ELGP-208     | GPO: double, wall mounted                                   |
| FIBM-013     | NOTICEBOARD: fixed, fabric covered                          |
| FIBM-018     | WHITEBOARD: fixed   |
| FUJ-059      | BENCH TOP: 600D, joinery under, laminate finish             |
| FUJ-117      | CUPBOARD: tall, double door, adj shelves, lockable          |
| FUJ-135      | CUPBOARD: underbench, double door, adj shelves              |
| FUJ-143      | CUPBOARD: wall mount, double door, adj shelves              |
| FUJ-145      | CUPBOARD: wall mount, double door, adj shelves, lockable    |
| FUJ-177.6    | JOINERY UNIT: reception desk, high performance surfaces     |
| FUJ-205      | CUPBOARD: drawer unit, lockable, single drawer              |
| FLOOR FINISH | carpet, broadloom, 48 oz., 90/10 wool/nylon                 |
| FLSK-009     | SKIRTING: vinyl, feather edged, 150H, prefinished           |
| FOBS-018     | CHAIR: office, ergonomic                                    |
| FOCW-016     | BIN: waste, general, 20L                                    |

| CODE     | DESCRIPTION                                     |
|----------|---|
| FQDW-004 | KEYBOARD SHELF: drop down, for workstation      |
| FQGE-005 | CLOCK: analogue, battery operated               |
| FQSM-009 | PEDESTAL: mobile, filing unit, 660H             |
| ITIN-016 | OUTLET: data, single RJ45, wall mounted         |
| ITIN-026 | OUTLET: data, double RJ45, wall mounted         |
| ITNE-007 | COMPUTER: desktop, with display screen          |
| ITNE-023 | PRINTER: networked                              |
| ITNE-049 | TELEPHONE: handset, desktop                     |
| ITSE-006 | BUTTON: duress, fixed                           |
| ITSE-025 | DOOR RELEASE: access control, remote activation |
| ITSE-029 | INTERCOM: audio, wall mount                     |
| LIFX-008 | LIGHT: task light, built in                     |
| MMGE-105 | TRANSFER SYSTEM: document                       |
| WLPT-003 | PARTITION: laminate                             |
| WLPT-008 | SCREEN: security, safety glass                  |
| WLWA-004 | WALL FINISH: paint, acrylic, washable           |



| REV | DESCRIPTION               | DATE       |
|-----|---------------------------|------------|
| 5   | Coding and naming updated | 20.03.2017 |

FOR GUIDANCE

| SCALE       | RLS Room Code | REV |
|-------------|---------------|-----|
| 1 : 50 @ A3 | REC-E         | 5   |