

# AUSTRALASIAN HFG STANDARD COMPONENTS

Room Layout Sheet

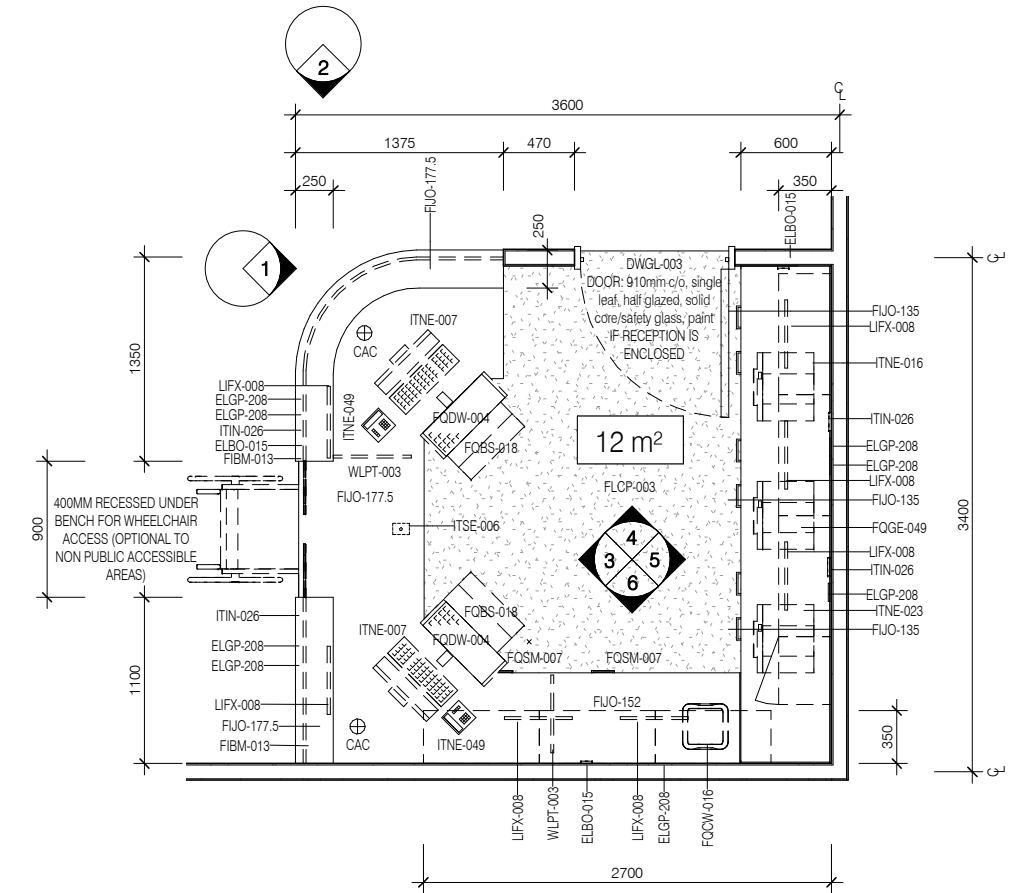
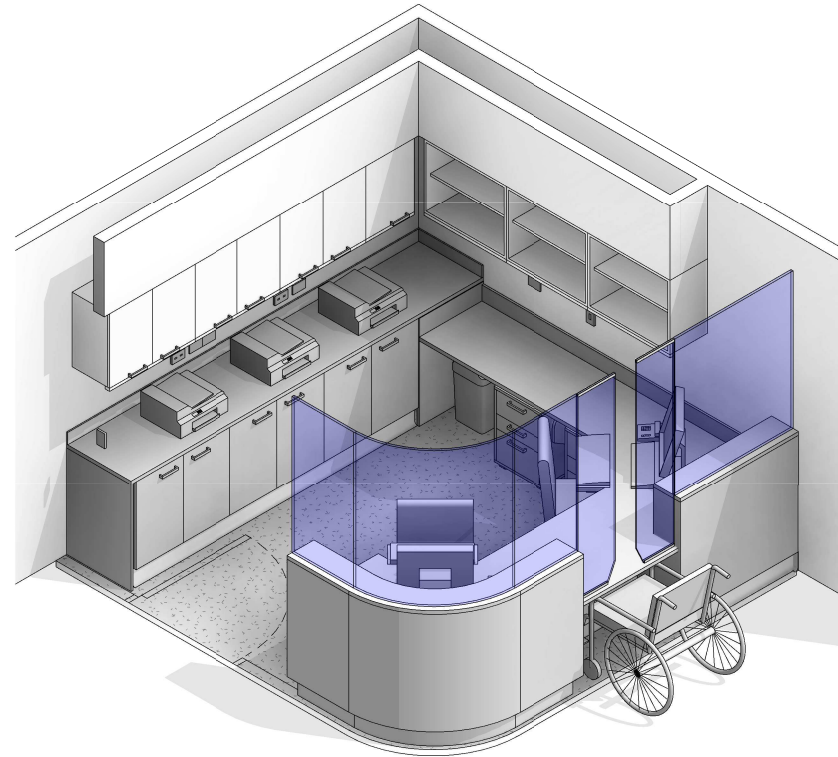
RLS Room Code: **RECL-12**

1:50 2.5m 2 1.5 1 0.5 0

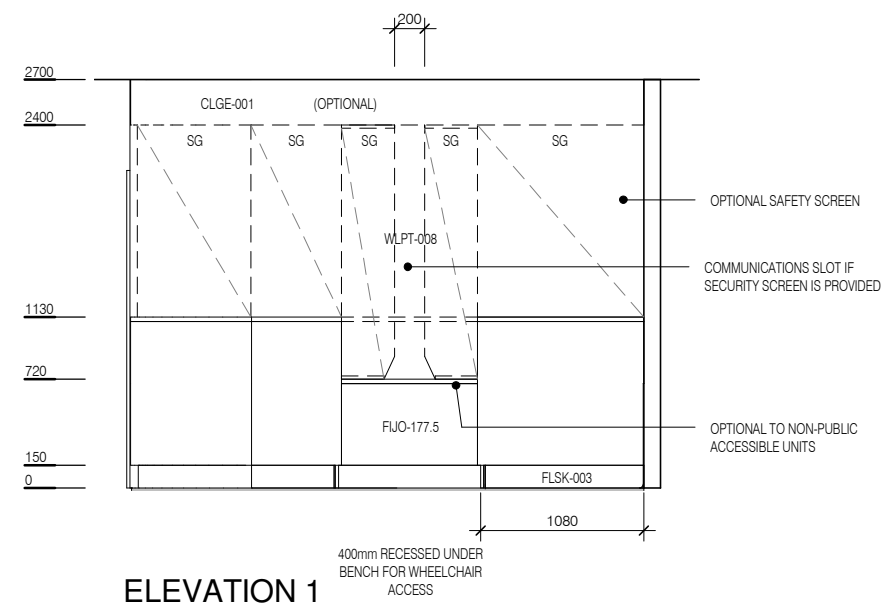
Room Name:

**RECEPTION/ CLERICAL, 12m<sup>2</sup>**

CODE	DESCRIPTION
CAC	Cable access cap
ELBO-015	SWITCH: light, single
ELGP-208	GPO: double, wall mounted
FIBM-013	NOTICEBOARD: fixed, fabric covered
FJO-059	BENCH TOP: 600D, joinery under, laminate finish
FJO-135	CUPBOARD: underbench, double door, adj shelves
FJO-145	CUPBOARD: wall mount, double door, adj shelves, lockable
FJO-152	CUPBOARD: wall mount, shelf unit, adj shelves
FJO-157	CUPBOARD: wall mount, single door, adj shelves, lockable
FJO-177.5	JOINERY UNIT: reception desk, laminate/timber
FLCP-003	FLOOR FINISH: carpet, broadloom, 48 oz., 90/10 wool/nylon
FLSK-003	SKIRTING: laminate, 150H, prefinished
FLSK-009	SKIRTING: vinyl, leather edged, 150H, prefinished
FQBS-018	CHAIR: office, ergonomic
FQCW-016	BIN: waste, general, 20L
FQDW-004	KEYBOARD SHELF: drop down, for workstation
FQGE-049	PHOTOCOPIER: benchtop
FQSM-007	PEDESTAL: mobile, drawer unit, 660H
ITIN-026	OUTLET: data, double RJ45, wall mounted
ITNE-007	COMPUTER: desktop, with display screen
ITNE-016	FAX MACHINE: desktop
ITNE-023	PRINTER: networked
ITNE-049	TELEPHONE: handset, desktop
ITSE-006	BUTTON: duress, fixed
LIFX-008	LIGHT: task light, built in
MMBE-045	WHEELCHAIR
WLPT-003	PARTITION: laminate
WLPT-008	SCREEN: security, safety glass
WLWA-004	WALL FINISH: paint, acrylic, washable

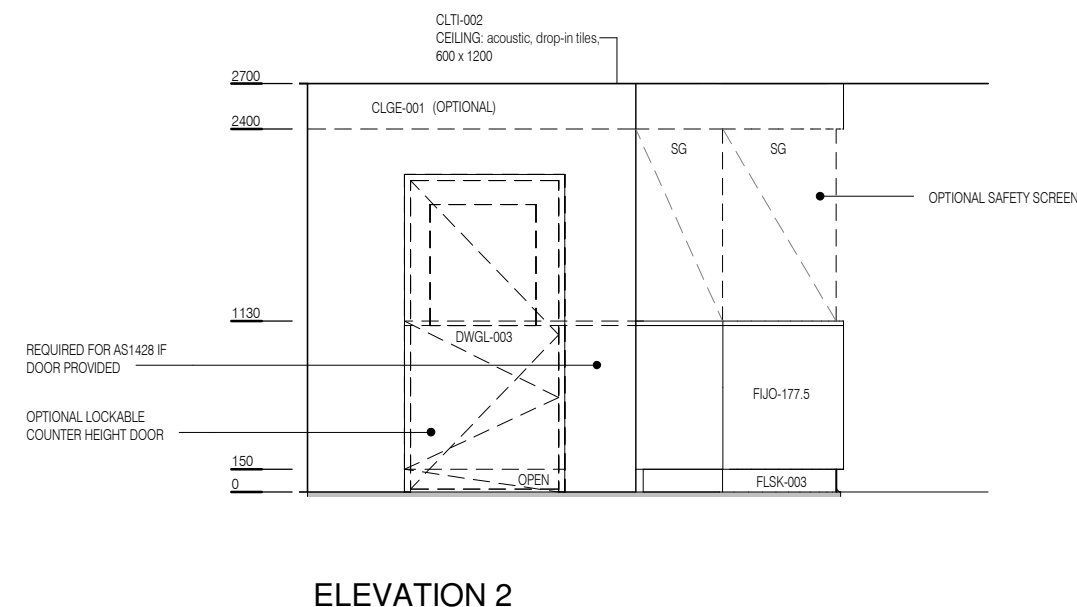


PLAN



ELEVATION 1

400mm RECESSED UNDER BENCH FOR WHEELCHAIR ACCESS



ELEVATION 2



REV	DESCRIPTION	DATE
4	Coding and naming updated	20.03.2017
	Coding and naming updated	20.03.2017

FOR GUIDANCE

SCALE	RLS Room Code	REV
1 : 50 @ A3	RECL-12	4

# AUSTRALASIAN HFG STANDARD COMPONENTS

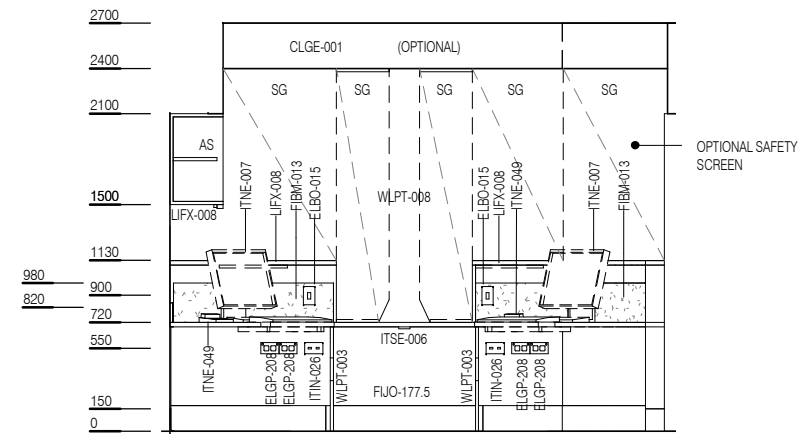
Room Layout Sheet

RLS Room Code: **RECL-12**

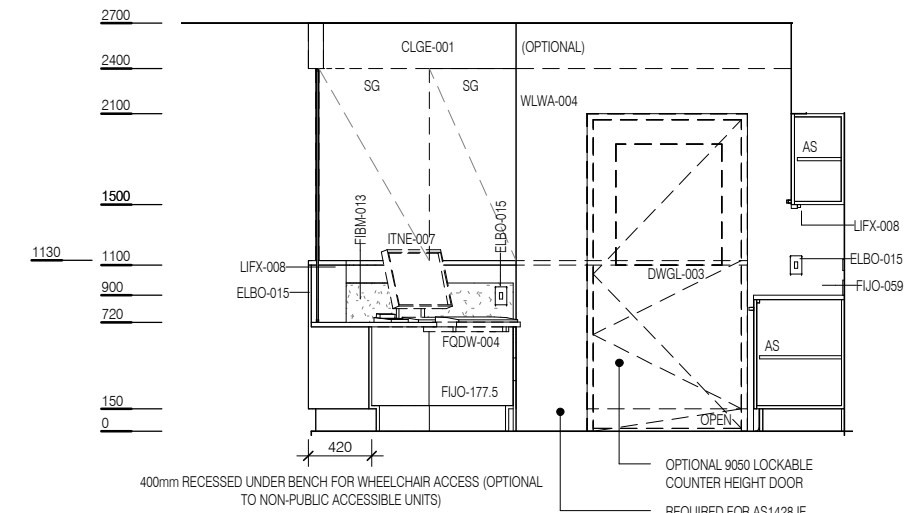
Room Name:

1:50 2.5m 2 1.5 1 0.5 0  
**RECEPTION/ CLERICAL, 12m<sup>2</sup>**

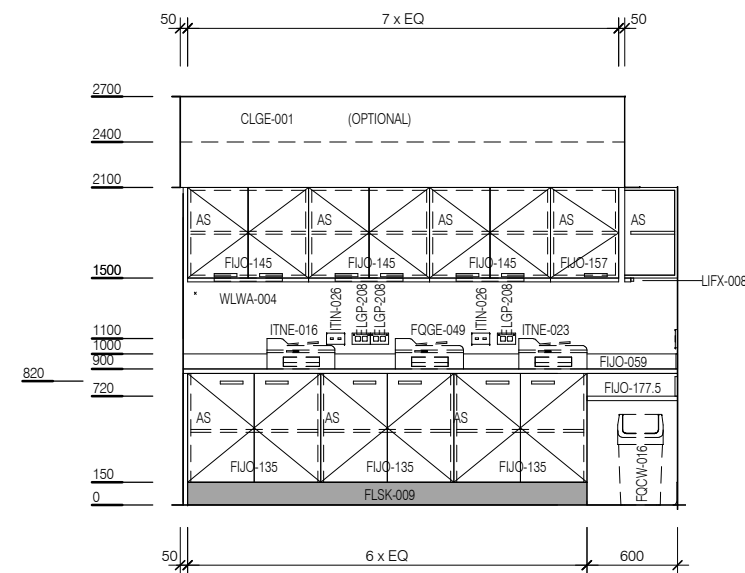
CODE	DESCRIPTION
CAC	Cable access cap
ELBO-015	SWITCH: light, single
ELGP-208	GPO: double, wall mounted
FIBM-013	NOTICEBOARD: fixed, fabric covered
FJJO-059	BENCH TOP: 600D, joinery under, laminate finish
FJJO-135	CUPBOARD: underbench, double door, adj shelves
FJJO-145	CUPBOARD: wall mount, double door, adj shelves, lockable
FJJO-152	CUPBOARD: wall mount, shelf unit, adj shelves
FJJO-157	CUPBOARD: wall mount, single door, adj shelves, lockable
FJJO-177.5	JOINERY UNIT: reception desk, laminate/timber
FLCP-003	FLOOR FINISH: carpet, broadloom, 48 oz., 90/10 wool/nylon
FLSK-003	SKIRTING: laminate, 150H, prefinished
FLSK-009	SKIRTING: vinyl, feather edged, 150H, prefinished
FQBS-018	CHAIR: office, ergonomic
FQCW-016	BIN: waste, general, 20L
FQDW-004	KEYBOARD SHELF: drop down, for workstation
FQGE-049	PHOTOCOPIER: benchtop
FQSM-007	PEDESTAL: mobile, drawer unit, 660H
ITIN-026	OUTLET: data, double RJ45, wall mounted
ITNE-007	COMPUTER: desktop, with display screen
ITNE-016	FAX MACHINE: desktop
ITNE-023	PRINTER: networked
ITNE-049	TELEPHONE: handset, desktop
ITSE-006	BUTTON: duress, fixed
LIFX-008	LIGHT: task light, built in
MMBE-045	WHEELCHAIR
WLPT-003	PARTITION: laminate
WLPT-008	SCREEN: security, safety glass
WLWA-004	WALL FINISH: paint, acrylic, washable



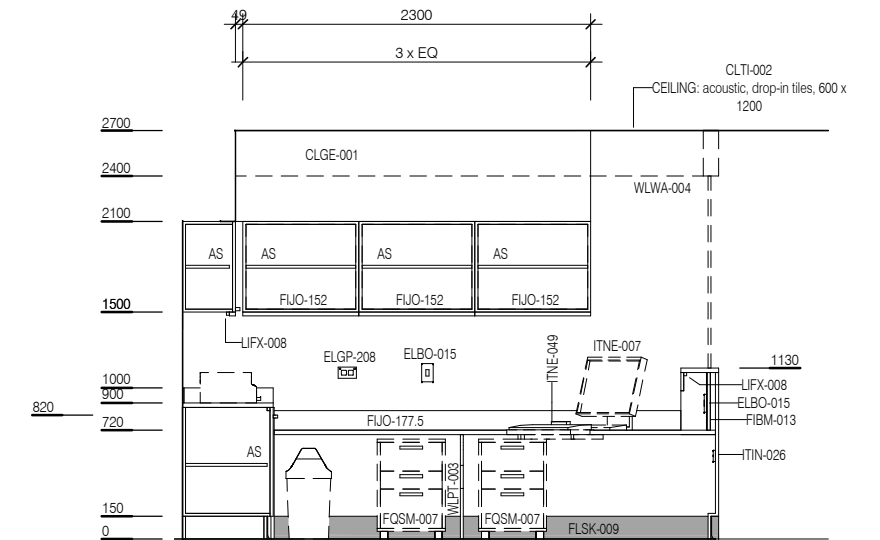
**ELEVATION 3**



**ELEVATION 4**



**ELEVATION 5**



**ELEVATION 6**



REV	DESCRIPTION	DATE
4	Coding and naming updated	20.03.2017

**FOR GUIDANCE**

SCALE	RLS Room Code	REV
1 : 50 @ A3	RECL-12	4