

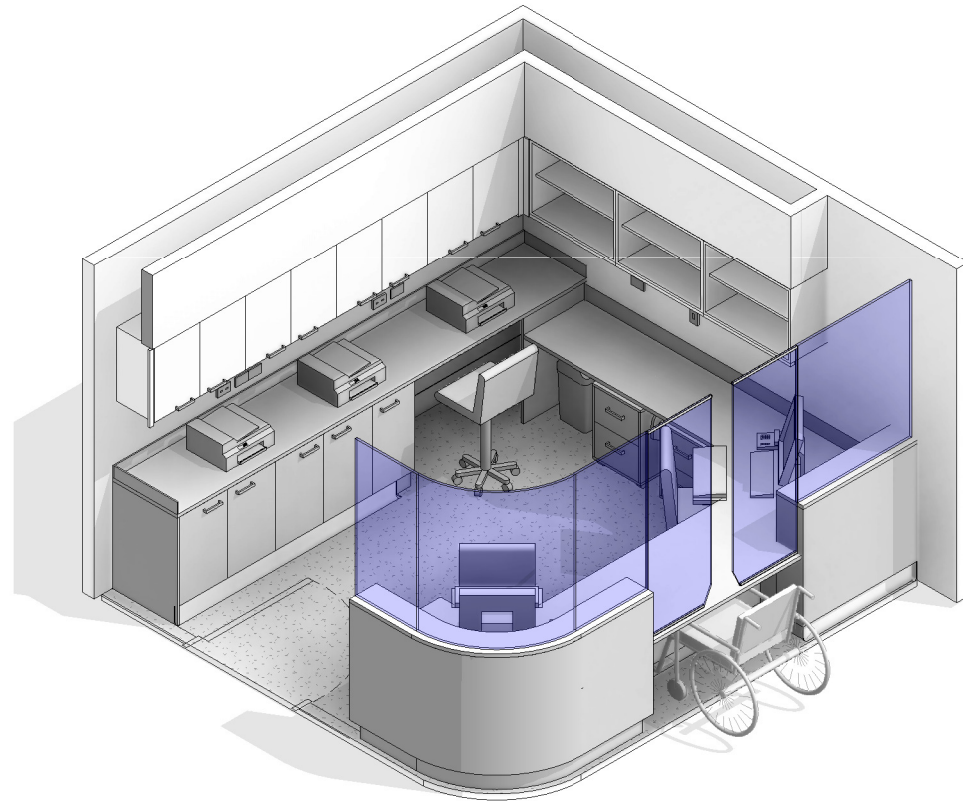
# AUSTRALASIAN HFG STANDARD COMPONENTS

Room Layout Sheet

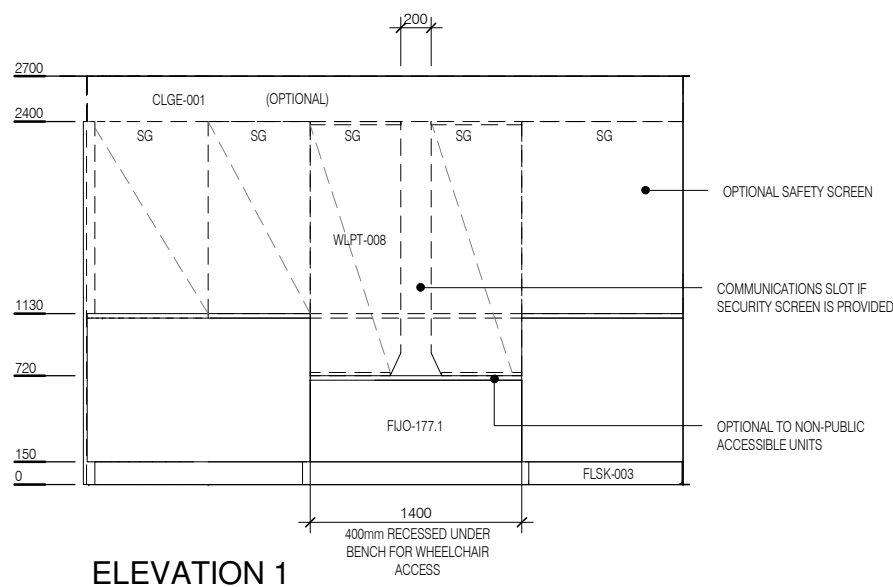
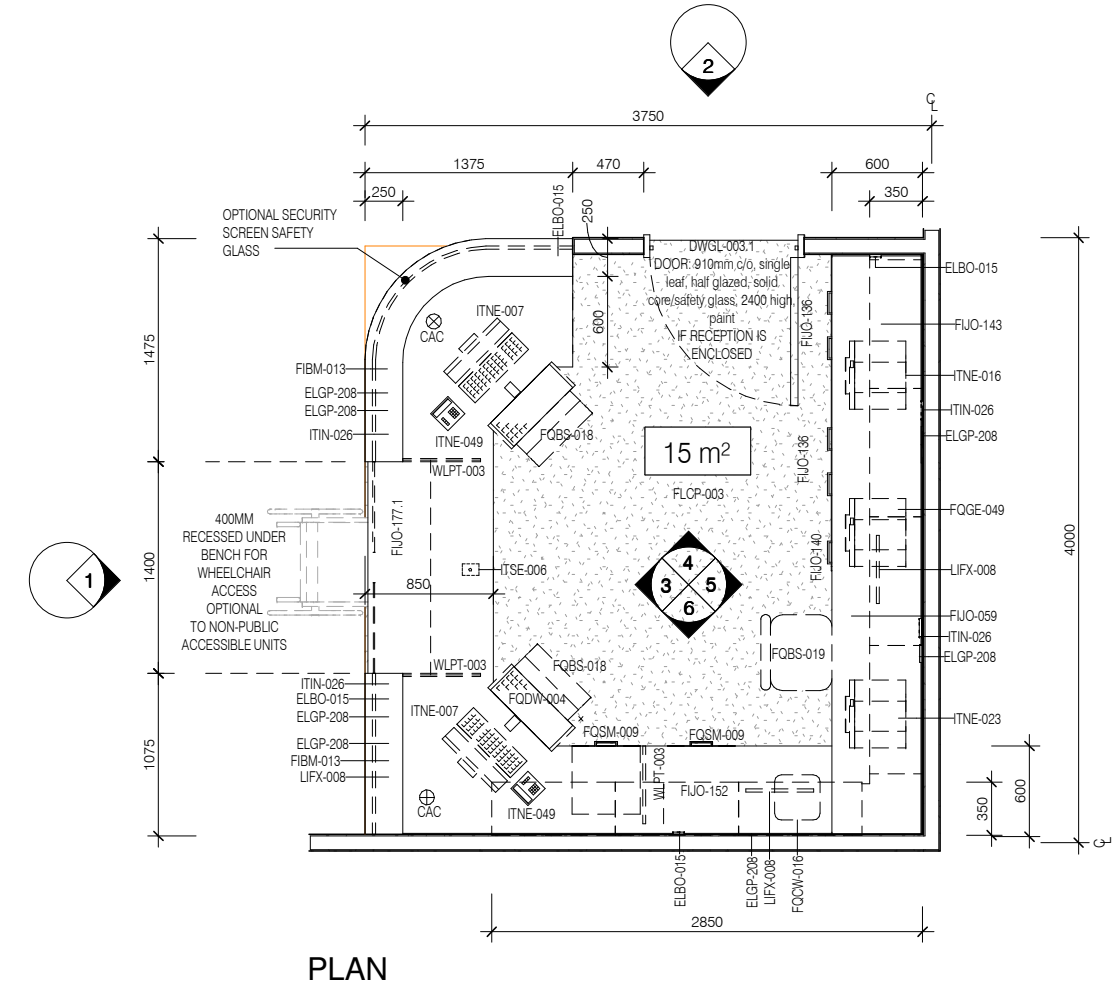
RLS Room Code: RECL-15

Room Name:

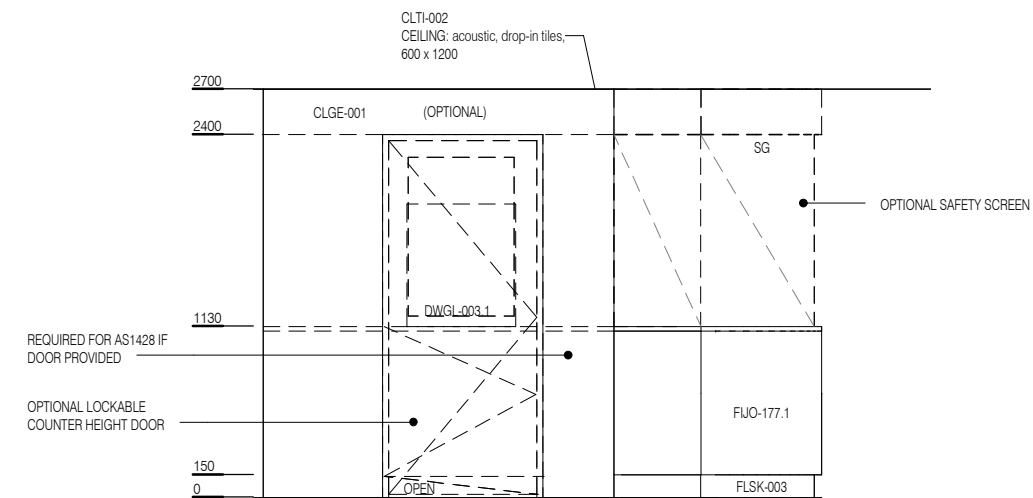
1:50 2.5m 2 1.5 1 0.5 0  
RECEPTION/ CLERICAL, 15m<sup>2</sup>



CODE	DESCRIPTION
CAC	Cable access cap
ELBO-015	SWITCH: light, single
ELGP-208	GPO: double, wall mounted
FIBM-013	NOTICEBOARD: fixed, fabric covered
FJO-059	BENCH TOP: 600D, joinery under, laminate finish
FJO-136	CUPBOARD: underbench, double door, adj shelves, lockable
FJO-140	CUPBOARD: underbench, single door, adj shelves
FJO-143	CUPBOARD: wall mount, double door, adj shelves
FJO-152	CUPBOARD: wall mount, shelf unit, adj shelves
FJO-177.1	JOINERY UNIT: reception desk, laminate/timber
FLCP-003	FLOOR FINISH: carpet, broadloom, 48 oz., 90/10 wool/nylon
FLSK-003	SKIRTING: laminate, 150H, prefinished
FLSK-009	SKIRTING: vinyl, feather edged, 150H, prefinished
FQBS-018	CHAIR: office, ergonomic
FQBS-019	CHAIR: office, ergonomic, high
FQCW-016	BIN: waste, general, 20L
FQDW-004	KEYBOARD SHELF: drop down, for workstation
FQGE-049	PHOTOCOPIER: benchtop
FQSM-009	PEDESTAL: mobile, filing unit, 660H
ITIN-026	OUTLET: data, double RJ45, wall mounted
ITNE-007	COMPUTER: desktop, with display screen
ITNE-016	FAX MACHINE: desktop
ITNE-023	PRINTER: networked
ITNE-049	TELEPHONE: handset, desktop
ITSE-006	BUTTON: duress, fixed
LIFX-008	LIGHT: task light, built in
MMBE-045	WHEELCHAIR
WLPT-003	PARTITION: laminate
WLPT-008	SCREEN: security, safety glass
WLWA-004	WALL FINISH: paint, acrylic, washable



ELEVATION 1

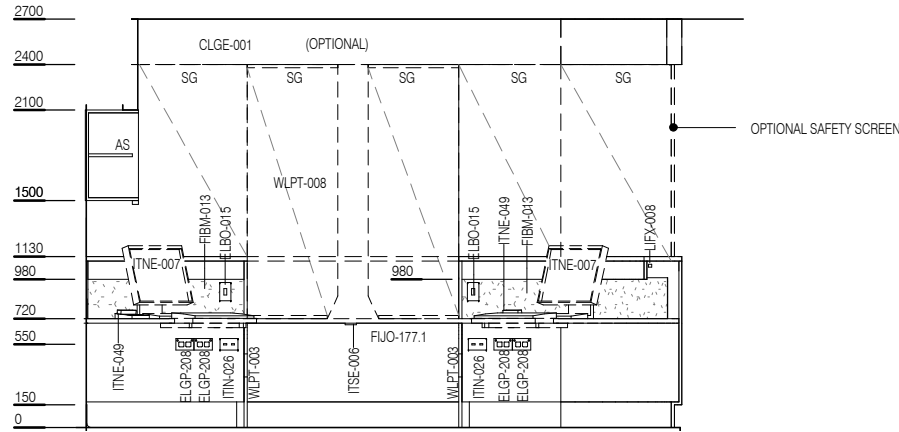


ELEVATION 2

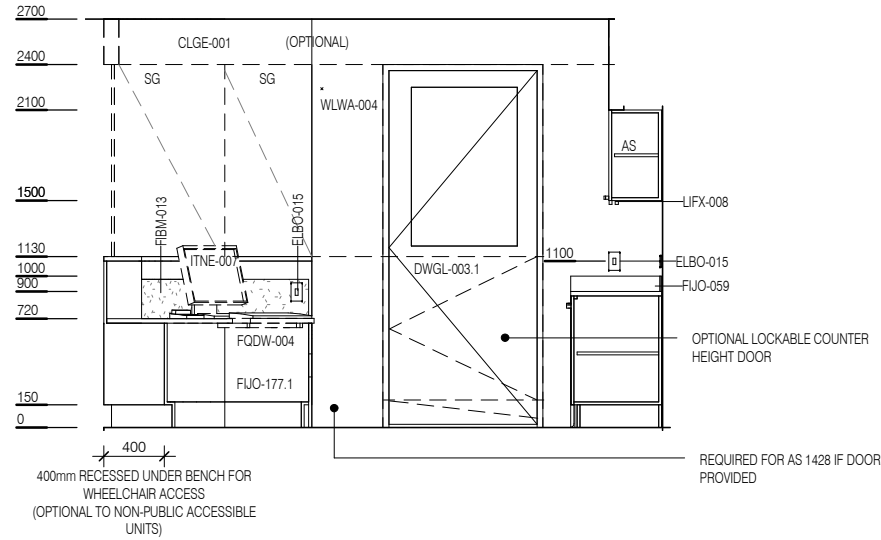
REV	DESCRIPTION	DATE
5	Coding and naming updated	20.03.2017

FOR GUIDANCE

SCALE	RLS Room Code	REV
1 : 50 @ A3	RECL-15	5

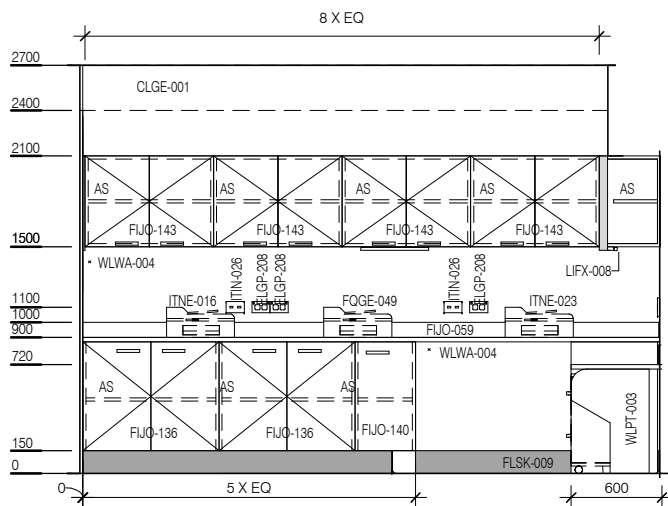


ELEVATION 3

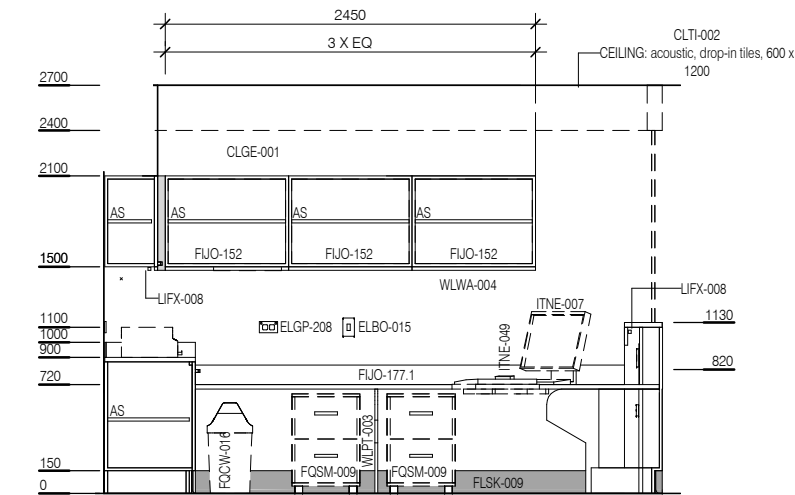


ELEVATION 4

CODE	DESCRIPTION
CAC	Cable access cap
ELBO-015	SWITCH: light, single
ELGP-208	GPO: double, wall mounted
FIBM-013	NOTICEBOARD: fixed, fabric covered
FJBO-059	BENCH TOP: 600D, joinery under, laminate finish
FJJO-136	CUPBOARD: underbench, double door, adj shelves, lockable
FJJO-140	CUPBOARD: underbench, single door, adj shelves
FJJO-143	CUPBOARD: wall mount, double door, adj shelves
FJJO-152	CUPBOARD: wall mount, shelf unit, adj shelves
FJJO-177.1	JOINERY UNIT: reception desk, laminate/finber
FLCP-003	FLOOR FINISH: carpet, broadloom, 48 oz., 90/10 wool/nylon
FLSK-003	SKIRTING: laminate, 150H, prefinished
FLSK-009	SKIRTING: vinyl, feather edged, 150H, prefinished
FQBS-018	CHAIR: office, ergonomic
FQBS-019	CHAIR: office, ergonomic, high
FQCW-016	BIN: waste, general, 20L
FQDW-004	KEYBOARD SHELF: drop down, for workstation
FQGE-049	PHOTOCOPIER: benchtop
FQSM-009	PEDESTAL: mobile, filing unit, 660H
ITIN-026	OUTLET: data, double RJ45, wall mounted
ITNE-007	COMPUTER: desktop, with display screen
ITNE-016	FAX MACHINE: desktop
ITNE-023	PRINTER: networked
ITNE-049	TELEPHONE: handset, desktop
ITSE-006	BUTTON: duress, fixed
LIFX-008	LIGHT: task light, built in
MMBE-045	WHEELCHAIR
WLPT-003	PARTITION: laminate
WLPT-008	SCREEN: security, safety glass
WLWA-004	WALL FINISH: paint, acrylic, washable



ELEVATION 5



ELEVATION 6