

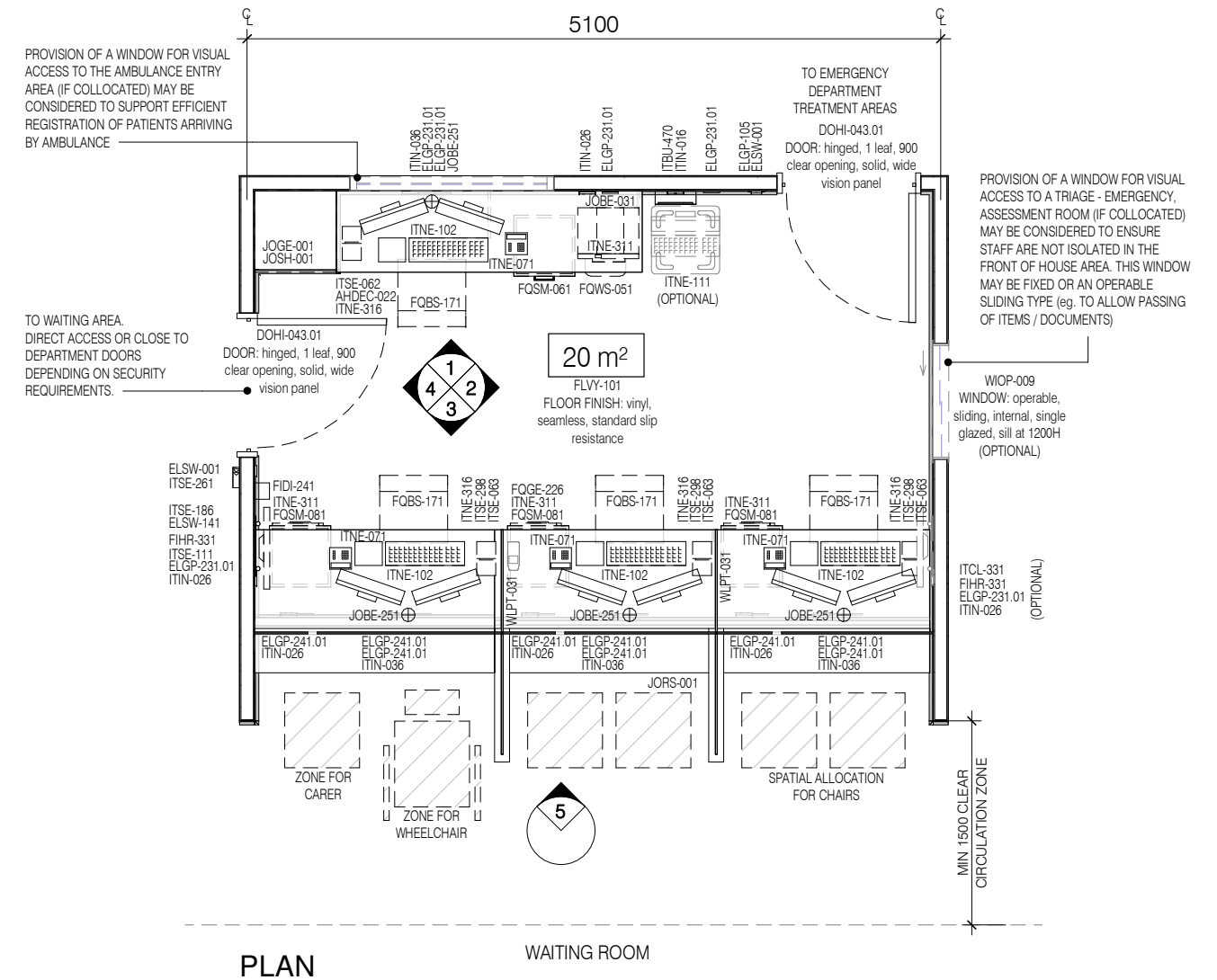
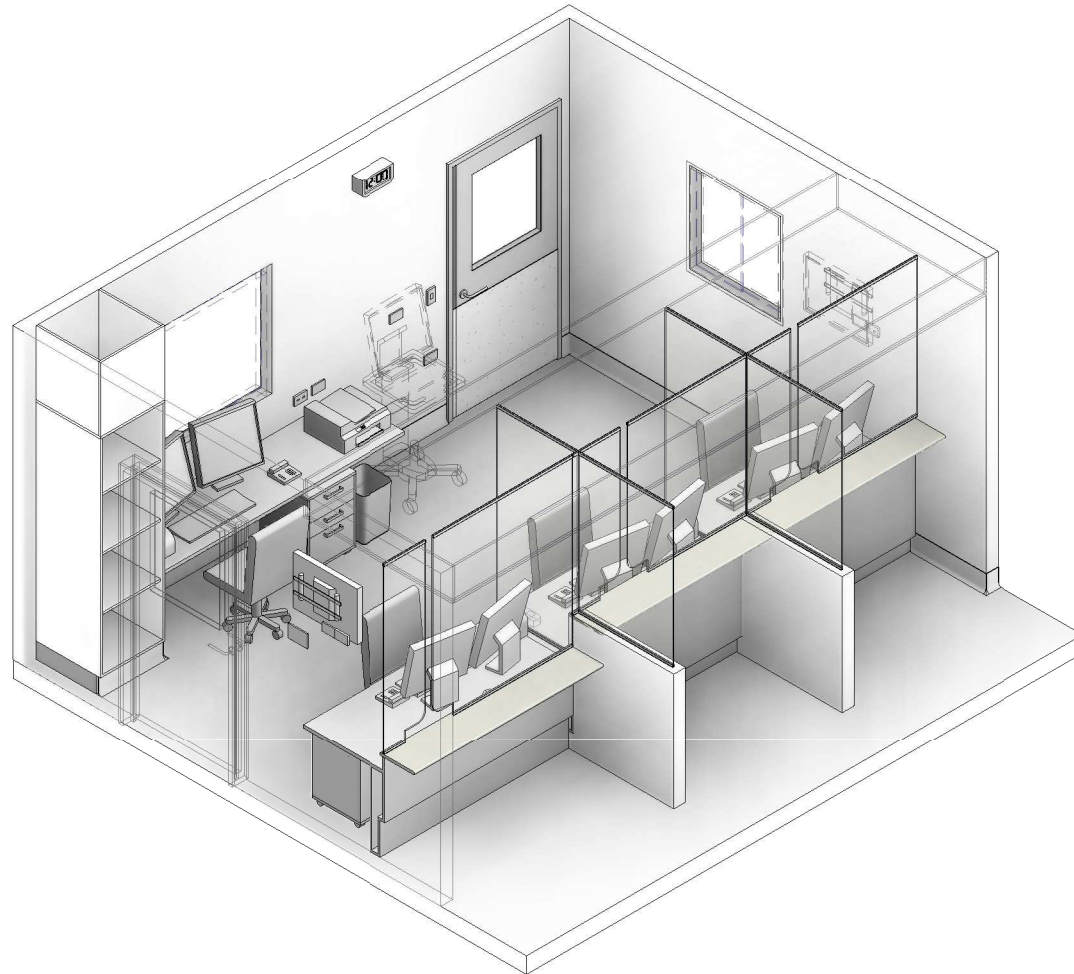
AUSTRALASIAN HFG STANDARD COMPONENTS

Room Layout Sheet

RLS Room Code: **RECP-E**

Room Name:

1:50 2.5m 2 1.5 1 0.5 0
RECEPTION - EMERGENCY



PLAN

WAITING ROOM

CODE	DESCRIPTION
AFDPR-006.01	DOOR PROTECTION: plate, to 900 AFFL
AHDEC-022	BUTTON: door release, remote activation, surface mounted
CLBK-011	BULKHEAD: flush set
ELGP-105	GPO: single, wall mounted, cleaner
ELGP-231.01	GPO: double, emergency power, wall mounted, horizontal
ELGP-241.01	GPO: double, emergency power, joinery mounted, horizontal
ELSW-001	SWITCH: light
ELSW-141	BUTTON: security, perimeter lockdown
FIDI-241	DISPENSER: alcohol-based hand rub, wall mounted
FIHR-331	BRACKET: television/AV system display screen, single, fixed, wall mounted
FLSK-021	SKIRTING: vinyl, integral with floor vinyl, coved
FLVY-101	FLOOR FINISH: vinyl, seamless, standard slip resistance
FOBS-171	CHAIR: office, ergonomic
FQGE-226	DEVICE: electronic funds transfer at point of sale (EFTPOS)
FQSM-061	PEDESTAL: mobile, 660H nominal, 2 equal drawers and 1 file drawer
FQSM-081	PEDESTAL: mobile, 660H nominal, 1 drawer and 1 printer shelf
FQWS-051	BIN: general waste, 20L
ITBU-470	CLOCK: digital display, electric, synchronised slave, wired internet protocol (IP), wall mounted
ITCL-331	DISPLAY SCREEN: patient flow system
ITIN-016	OUTLET: data, single RJ45, wall mounted
ITIN-026	OUTLET: data, double RJ45, wall mounted
ITIN-036	OUTLET: data, triple RJ45, wall mounted

CODE	DESCRIPTION
ITNE-071	TELEPHONE: handset, desktop
ITNE-102	COMPUTER: dual display screens, central processing unit (CPU), keyboard and mouse, desktop
ITNE-111	COMPUTER: workstation on wheels (WOW), medical grade, all-in-one computer, keyboard and mouse, on cart
ITNE-311	PRINTER: desktop
ITNE-316	PRINTER: labels, small, desk top
ITSE-062	BUTTON: security, duress, fixed, surface mounted
ITSE-063	BUTTON: security, duress, fixed, under bench mounted
ITSE-111	DISPLAY SCREEN: security, CCTV monitoring
ITSE-261	READER: security, access control, proximity card, wall mounted
ITSE-298	BUTTON: door release, remote activation, surface mounted
JOBE-031	BENCH: 600D, laminate
JOBE-211	BENCH SUPPORT: bracket
JOBE-251	CAP: cable access
JOGE-001	BULKHEAD: joinery
JORS-001	JOINERY UNIT: reception desk
JORS-053	SECURITY GLAZING: to reception, with communication slot and pass through aperture
JOSH-001	SHELF UNIT: tall, adjustable shelves
WLFI-002	WALL FINISH: paint, clinical areas
WLPT-031	SCREEN: privacy divider

REV	DESCRIPTION	DATE
7	GENERAL UPDATE FOLLOWING ERG REVIEW	18/08/2025

FOR GUIDANCE

SCALE	RLS Room Code	REV
1 : 50 @ A3	RECP-E	7

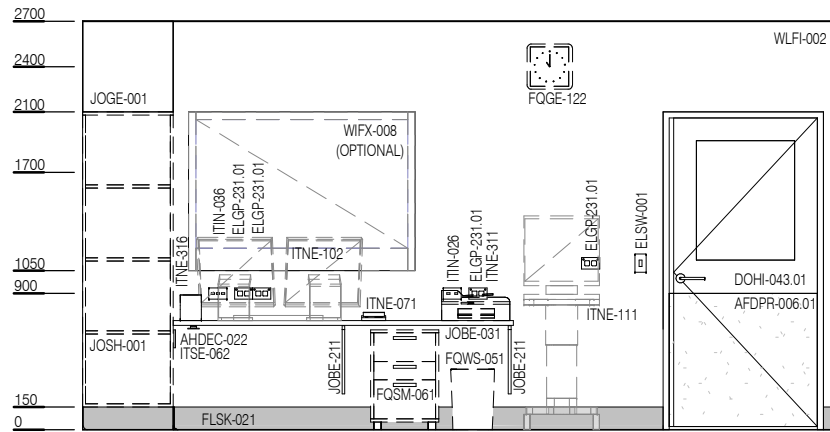
AUSTRALASIAN HFG STANDARD COMPONENTS

Room Layout Sheet

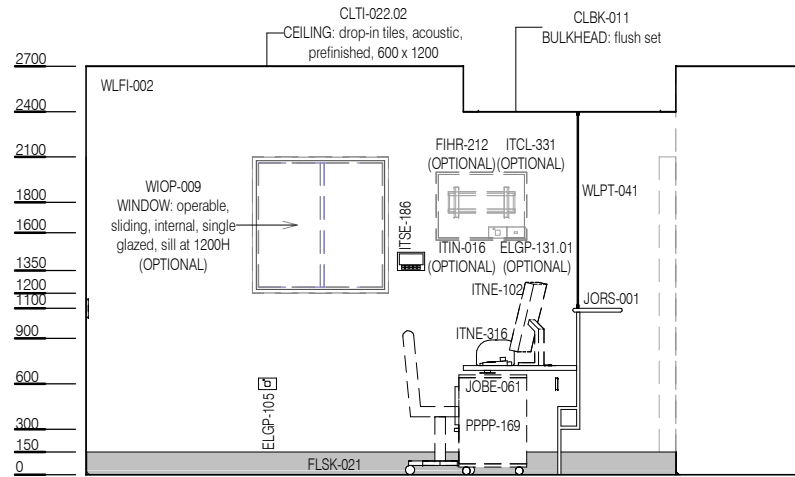
RLS Room Code: **RECP-E**

Room Name:

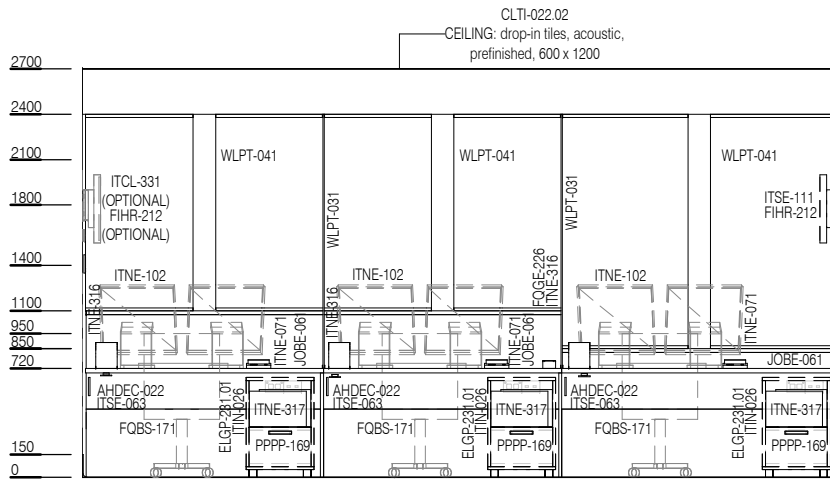
1:50 2.5m 2 1.5 1 0.5 0
RECEPTION - EMERGENCY



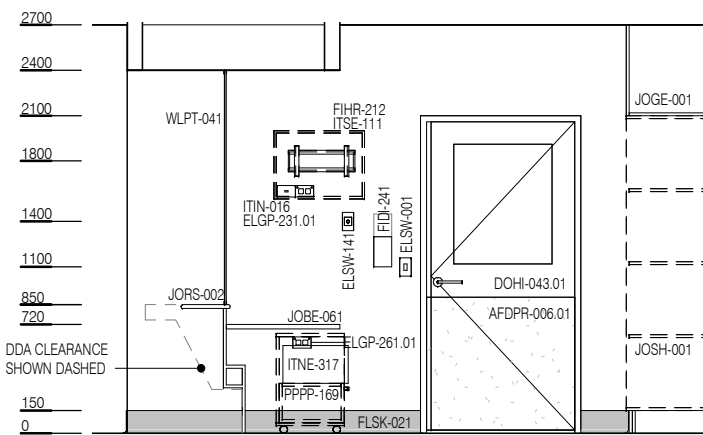
ELEVATION 1



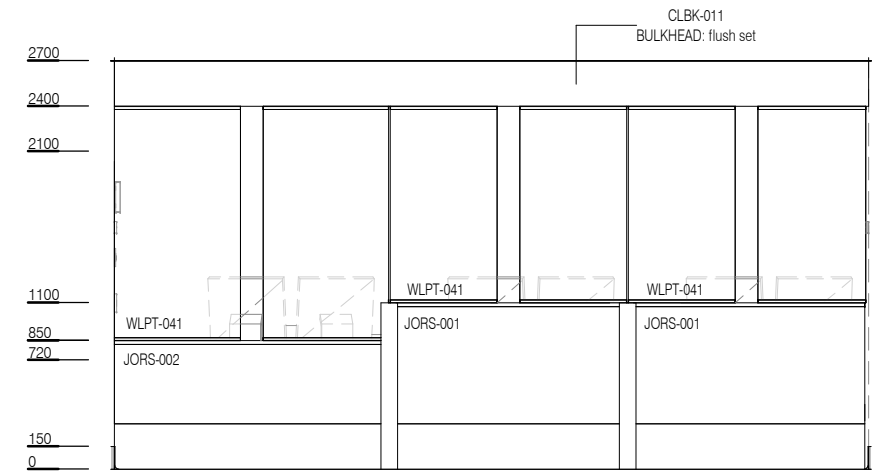
ELEVATION 2



ELEVATION 3



ELEVATION 4



ELEVATION 5

CODE	DESCRIPTION
AFDPR-006.01	DOOR PROTECTION: plate, to 900 AFFL
AHDEC-022	BUTTON: door release, remote activation, surface mounted
ELGP-105	GPO: single, wall mounted, cleaner
ELGP-131.01	GPO: single, emergency power, wall mounted, horizontal
ELGP-231.01	GPO: double, emergency power, wall mounted, horizontal
ELGP-258	GPO: double, emergency power, in desk box
ELGP-261.01	GPO: double, UPS, wall mounted, horizontal
ELSW-001	SWITCH: light
ELSW-141	BUTTON: security, perimeter lockdown
FIDI-241	DISPENSER: alcohol-based hand rub, wall mounted
FIHR-212	BRACKET: computer display screen, single, articulated, wall mounted
FLSK-021	SKIRTING: vinyl, integral with floor vinyl, coved
FLVY-101	FLOOR FINISH: vinyl, seamless, standard slip resistance
FQBS-171	CHAIR: office, ergonomic
FOGE-122	CLOCK: digital, battery operated
FOGE-226	DEVICE: electronic funds transfer at point of sale (EFTPOS)
FQSM-061	PEDESTAL: mobile, 660H nominal, 2 equal drawers and 1 file drawer
FWWS-051	BIN: general waste, 20L
ITCL-331	DISPLAY SCREEN: patient flow system
ITIN-016	OUTLET: data, single RJ45, wall mounted
ITIN-026	OUTLET: data, double RJ45, wall mounted
ITIN-036	OUTLET: data, triple RJ45, wall mounted
ITIN-039	OUTLET: data, triple RJ45, in desk box
ITIN-172	DESK BOX: power and data outlets, softwired, surface mounted

CODE	DESCRIPTION
ITNE-071	TELEPHONE: handset, desktop
ITNE-102	COMPUTER: dual display screens, central processing unit (CPU), keyboard and mouse, desktop
ITNE-111	COMPUTER: workstation on wheels (WOW), medical grade, all-in-one computer, keyboard and mouse, on cart
ITNE-311	PRINTER: desktop
ITNE-316	PRINTER: labels, small, desk top
ITNE-317	PRINTER: labels, large, desktop
ITSE-062	BUTTON: security, duress, fixed, surface mounted
ITSE-063	BUTTON: security, duress, fixed, under bench mounted
ITSE-111	DISPLAY SCREEN: security, CCTV monitoring
ITSE-186	INTERCOM: audio-visual, slave, wall mounted
ITSE-261	READER: security, access control, proximity card, wall mounted
JOB-031	BENCH: 600D laminate
JOB-061	BENCH: 750D laminate
JOB-211	BENCH SUPPORT: bracket
JOG-001	BULKHEAD: joinery
JORS-001	JOINERY UNIT: reception desk
JORS-002	JOINERY UNIT: reception desk, accessible
JOSH-001	SHELF UNIT: tall, adjustable shelves
PPPP-169	PEDESTAL: mobile, printer unit, 660H
WLFI-002	WALL FINISH: paint, clinical areas
WLPT-031	SCREEN: privacy divider
WLPT-041	SCREEN: acoustic divider



**DETAIL 6 -
DESKBOX (1:25 @
A3)**

REV	DESCRIPTION	DATE
7	GENERAL UPDATE FOLLOWING ERG REVIEW	18/08/2025

FOR GUIDANCE

SCALE	RLS Room Code	REV
1 : 50 @ A3	RECP-E	7