



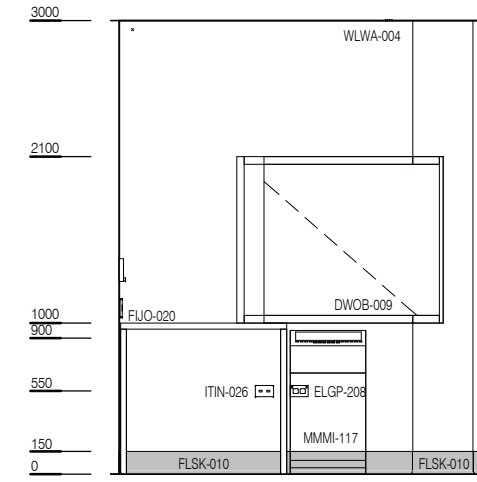
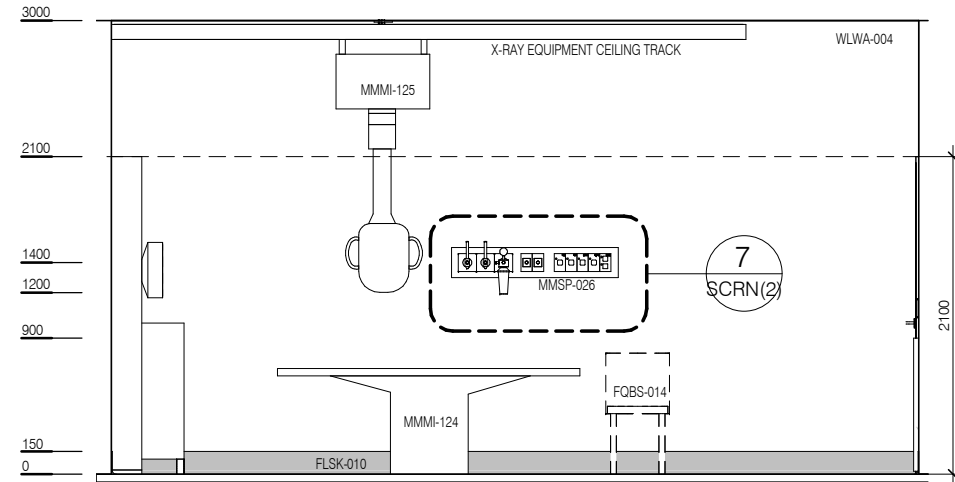
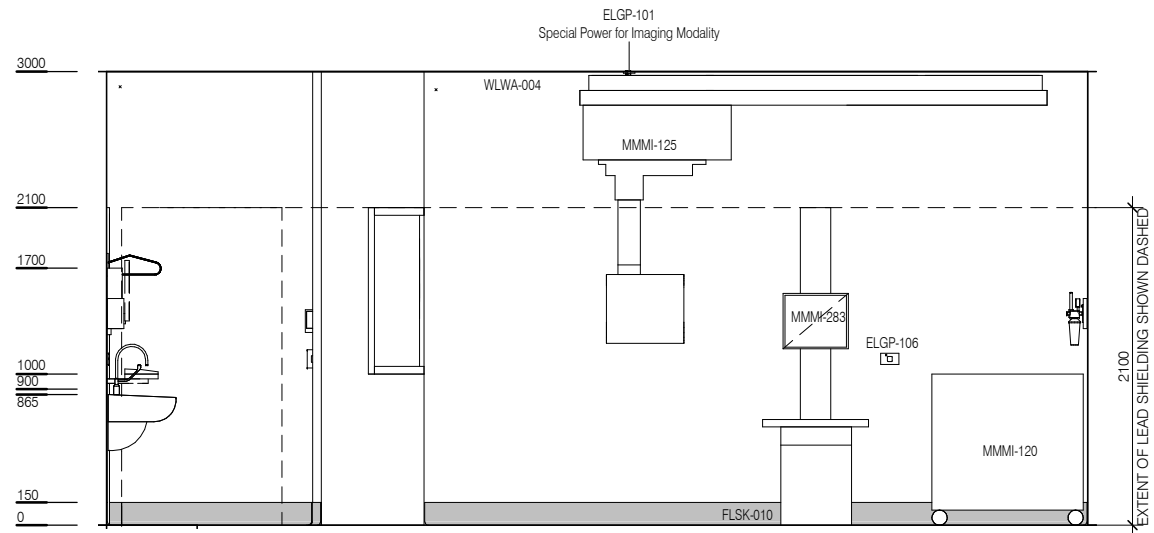
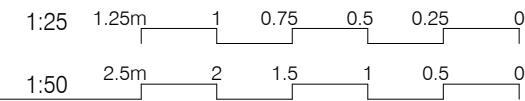
# AUSTRALASIAN HFG STANDARD COMPONENTS

Room Layout Sheet

RLS Room Code: **SCRN**

Room Name:

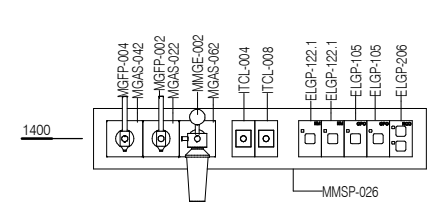
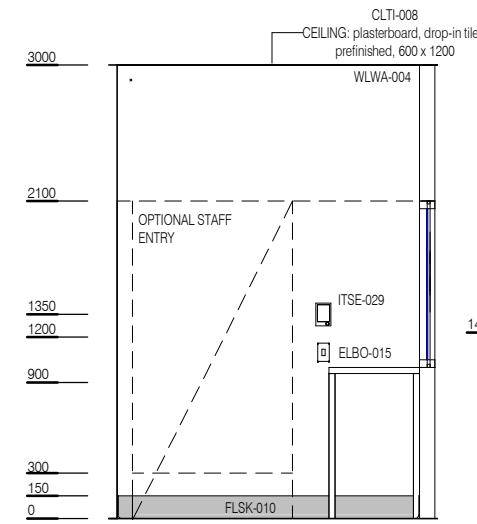
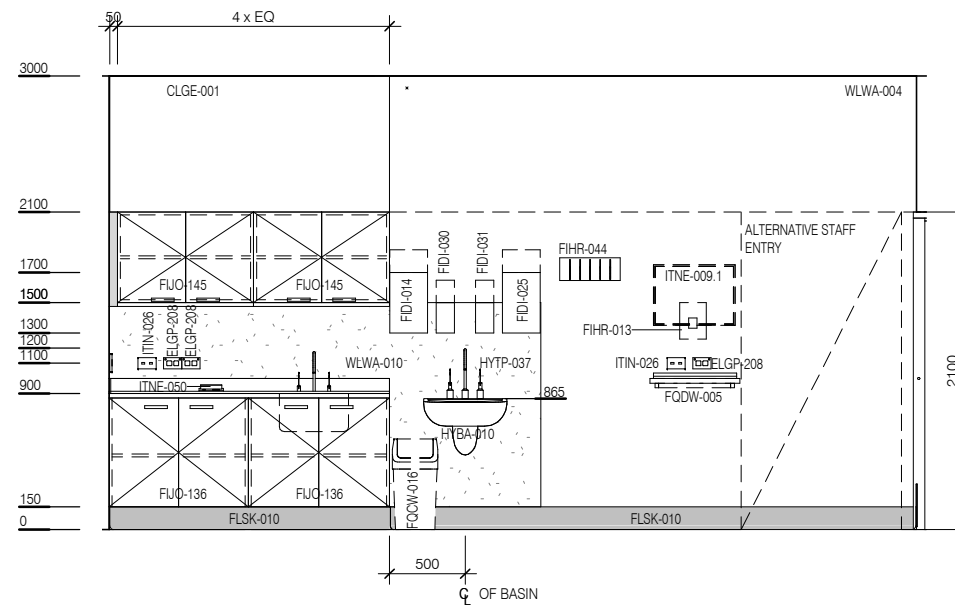
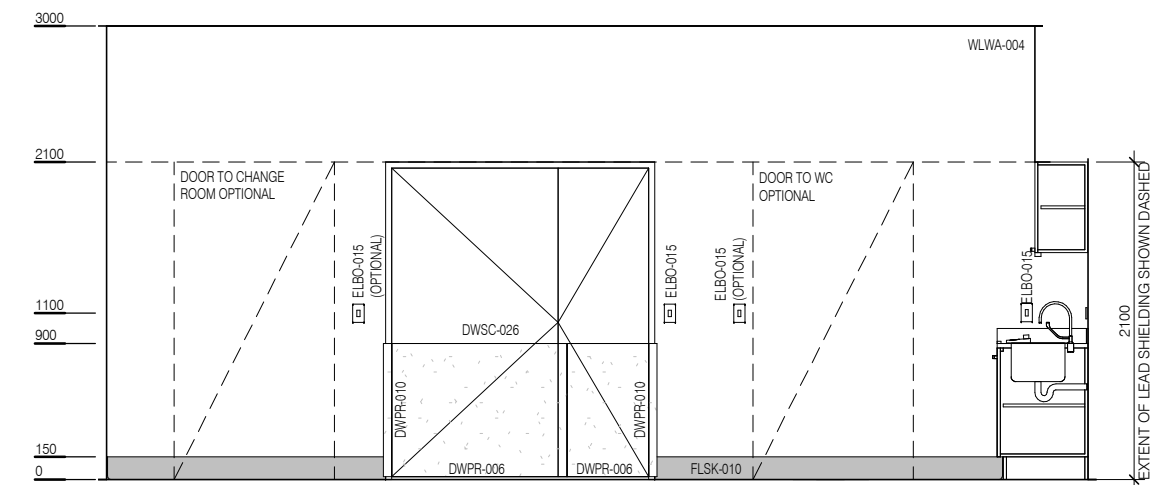
**SCREENING ROOM (FLUOROSCOPY)**



ELEVATION 1

ELEVATION 2

ELEVATION 5



ELEVATION 3

ELEVATION 4

ELEVATION 6

ELEVATION 7 ( 1 : 25 @ A3 )

CODE	DESCRIPTION
DWOB-009	OBSERVATION: internal window, lead glass, clear
DWPR-003	DOOR PROTECTION: kickplate, to 300 AFFL, vinyl, prefinished
DWPR-006	DOOR PROTECTION: protection plate, to 900 AFFL, PVC, prefinished
DWPR-010	DOOR PROTECTION: to door frame, PVC, prefinished
ELBO-015	SWITCH: light, single
ELGP-101	GPO: single, ceiling mounted
ELGP-105	GPO: single, on services panel
ELGP-106	GPO: single, special, for equipment
ELGP-122.1	GPO: emergency power, single, on services panel (V)
ELGP-206	GPO: double, on services panel, RCD protected
ELGP-208	GPO: double, wall mounted
ELPR-001	BODY PROTECTED ELECTRICAL AREA
ELPR-002	CARDIAC PROTECTED ELECTRICAL AREA
FIDI-014	DISPENSER: disposable glove
FIDI-025	DISPENSER: paper/hand towel
FIDI-030	DISPENSER: soap
FIDI-031	DISPENSER: soap antiseptic
FIHR-013	BRACKET: for monitor, ECG

CODE	DESCRIPTION
FIHR-044	RACK: lead apron
FLUO-020	BENCH: 600D, open under, laminate finish
FLUO-060	BENCH TOP: 600D, joinery under, stainless steel lipped
FLUO-136	CUPBOARD: underbench, double door, adj shelves, lockable
FLUO-145	CUPBOARD: wall mount, double door, adj shelves, lockable
FLSK-010	SKIRTING: vinyl, floor vinyl coved, 150H, prefinished
FLVY-007	FLOOR FINISH: vinyl, seamless, coved, standard slip resistant
FOBS-014	CHAIR: client
FQCW-016	BIN: waste, general, 20L
FQDW-005	KEYBOARD SHELF: slide out, for workstation
HYBA-010	BASIN: handwash, Type B
HYBA-051	SINK: single
HYTP-037	TAPWARE: mixer, elbow levers
HYTP-038	TAPWARE: mixer, elbow levers, long
ITCL-004	BUTTON: nurse call, emergency
ITCL-008	BUTTON: nurse call, staff assist
ITIN-026	OUTLET: data, double RJ45, wall mounted
ITNE-009.1	COMPUTER: hi performance, for clinical / PACS use - wall mounted

CODE	DESCRIPTION
ITNE-050	TELEPHONE: handset, desktop, handsfree
ITSE-029	INTERCOM: audio, wall mount
MGAS-022	OUTLET: medical air (MA), on services panel
MGAS-042	OUTLET: oxygen (O2), on services panel
MGAS-062	OUTLET: suction, on services panel
MGFP-002	FLOWMETER: medical air
MGFP-004	FLOWMETER: oxygen
MMGE-002	ADAPTER: suction
MMGE-100	SUCTION BOTTLE
MMMI-117	CONSOLE: control, fluoroscopy/screening
MMMI-120	GENERATOR: radiology, fluoroscopy/screening
MMMI-124	STAND: floor, with patient table, fluoroscopy/screening
MMMI-125	SYSTEM: imaging, fluoroscopy/screening imaging unit
MMMI-283	BUCKY: wall, general X-Ray
MMMI-350	SCREEN: radiation, lead glass
MMSPP-026	SERVICES PANEL: wall mounted
WLSH-004	SHIELDING: lead lining
WLWA-004	WALL FINISH: paint, acrylic, washable
WLWA-010	WALL FINISH: splashback, vinyl



REV	DESCRIPTION	DATE
3	Coding and naming updated	20.03.2017

FOR GUIDANCE

SCALE	RLS Room Code	REV
1 : 50 @ A3	SCRN	3