

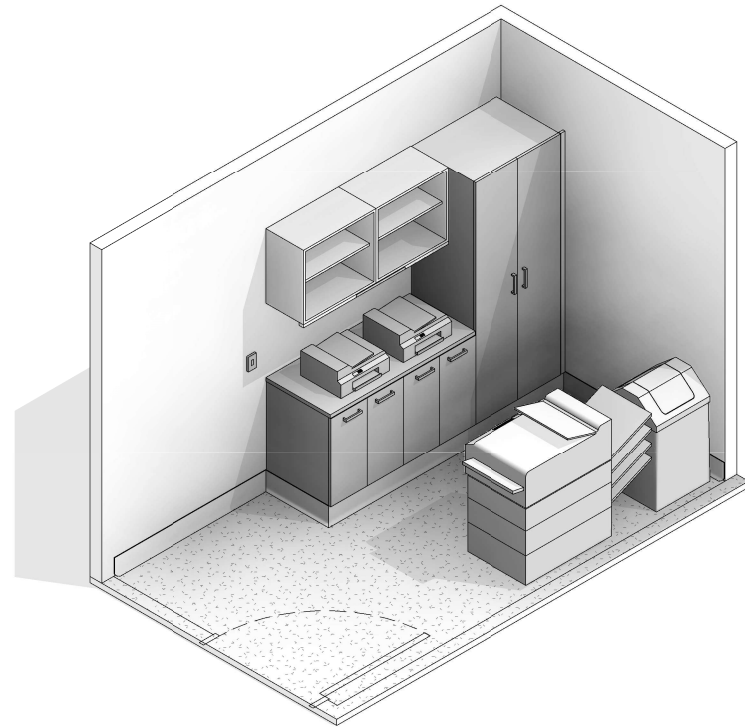
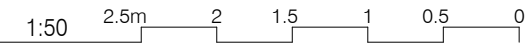
AUSTRALASIAN HFG STANDARD COMPONENTS

Room Layout Sheet

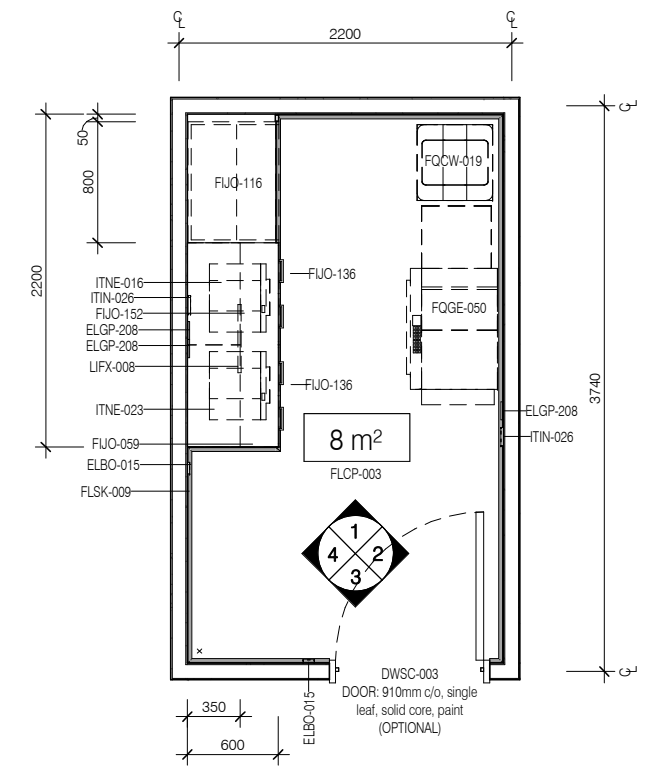
RLS Room Code: **STPS-8**

Room Name:

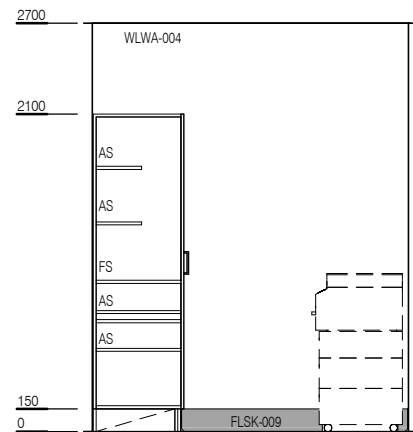
STORE - PHOTOCOPY/ STATIONERY, 8m²



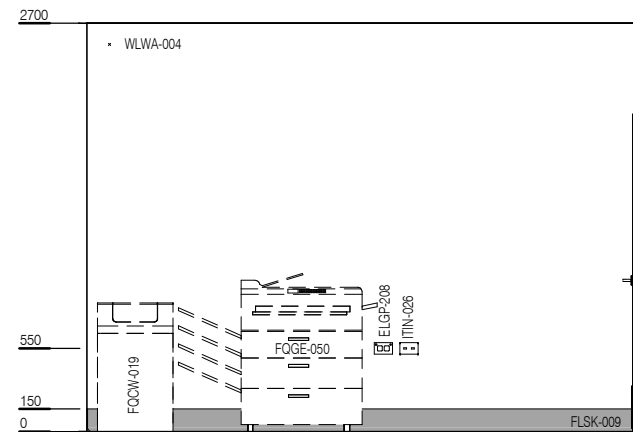
CODE	DESCRIPTION
DWPR-003	DOOR PROTECTION: kickplate, to 300 AFFL, vinyl, prefinished
ELBO-015	SWITCH: light, single
ELGP-208	GPO: double, wall mounted
FUJO-059	BENCH TOP: 600D, joinery under, laminate finish
FUJO-116	CUPBOARD: tall, double door, adj shelves
FUJO-136	CUPBOARD: underbench, double door, adj shelves, lockable
FUJO-152	CUPBOARD: wall mount, shelf unit, adj shelves
FLCP-003	FLOOR FINISH: carpet, broadloom, 48 oz., 90/10 wool/nylon
FLSK-009	SKIRTING: vinyl, feather edged, 150H, prefinished
FOCW-019	BIN: waste, general, 50L
FOGE-050	PHOTOCOPIER: floorstanding
ITIN-026	OUTLET: data, double RJ45, wall mounted
ITNE-016	FAX MACHINE: desktop
ITNE-023	PRINTER: networked
LIFX-008	LIGHT: task light, built in
WLWA-004	WALL FINISH: paint, acrylic, washable



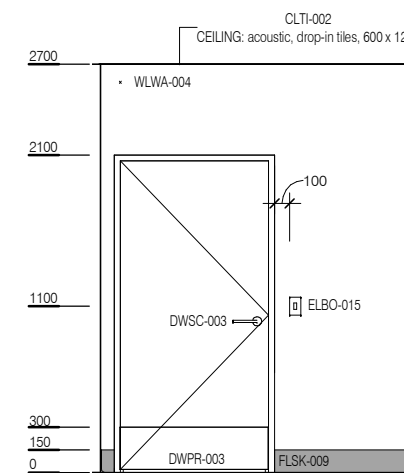
PLAN



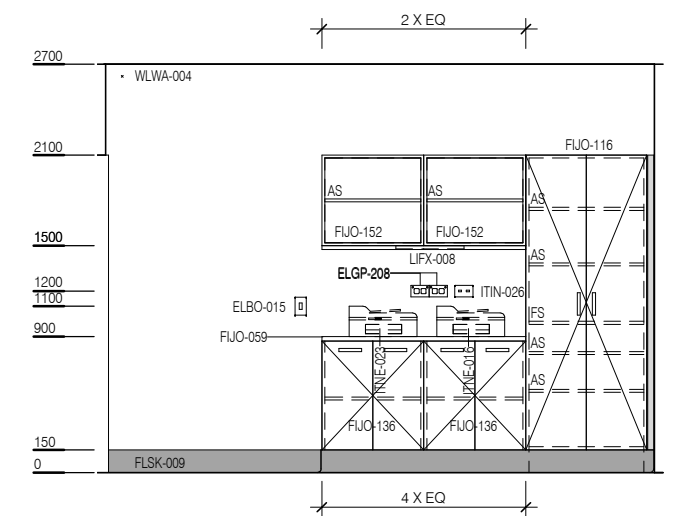
ELEVATION 1



ELEVATION 2



ELEVATION 3



ELEVATION 4



REV	DESCRIPTION	DATE
4	Coding and naming updated	20.03.2017

FOR GUIDANCE

SCALE	RLS Room Code	REV
1 : 50 @ A3	STPS-8	4