

AUSTRALASIAN HFG STANDARD COMPONENTS

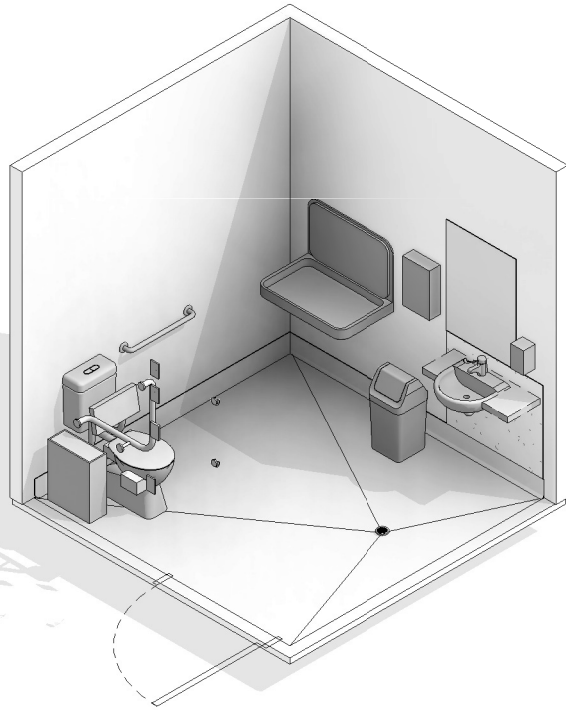
Room Layout Sheet

RLS Room Code: **WCAC**

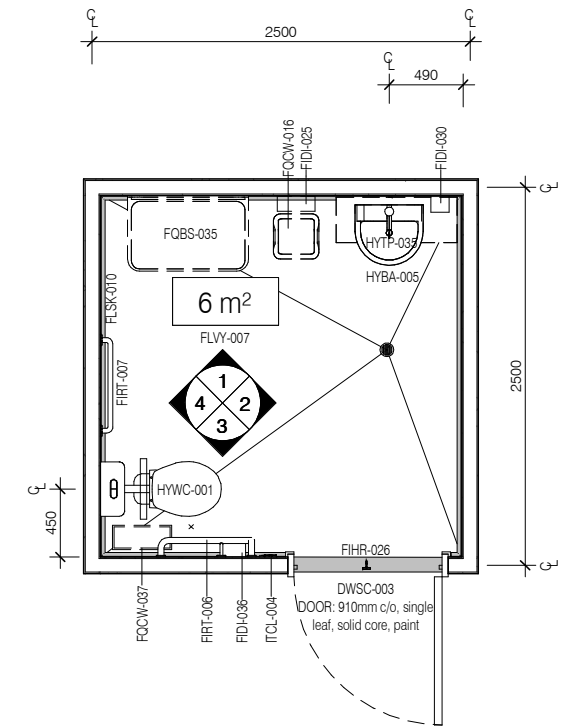
Room Name:

1:50 2.5m 2 1.5 1 0.5 0

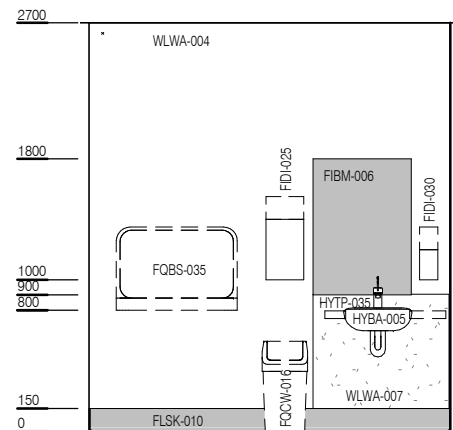
TOILET - ACCESSIBLE, 6m²



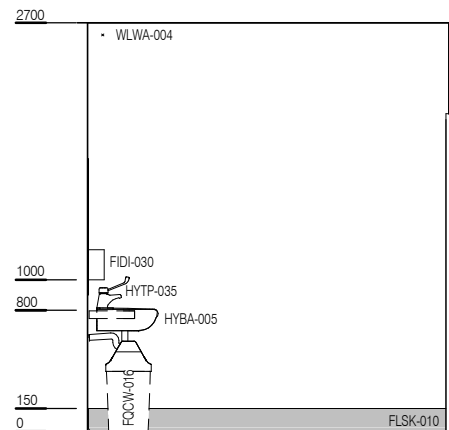
| CODE | DESCRIPTION |
|----------|--|
| DWPR-006 | DOOR PROTECTION: protection plate, to 900 AFLL, PVC, prefinished |
| DWPR-010 | DOOR PROTECTION: to door frame, PVC, prefinished |
| ELBO-015 | SWITCH: light, single |
| FIBM-006 | MIRROR: fixed, glass, 800H nom. |
| FIDI-025 | DISPENSER: paper/hand towel |
| FIDI-030 | DISPENSER: soap |
| FIDI-036 | DISPENSER: toilet paper |
| FIHR-026 | HOOK: coat |
| FIRT-006 | GRAB RAIL: WC |
| FIRT-007 | GRAB RAIL: WC, accessible use |
| FLSK-010 | SKIRTING: vinyl, floor vinyl coved, 150H, prefinished |
| FLVY-007 | FLOOR FINISH: vinyl, seamless, coved, standard slip resistant |
| FOBS-035 | CHANGE TABLE: baby |
| FQCW-016 | BIN: waste, general, 20L |
| FQCW-037 | BIN: waste, sanitary |
| HYBA-005 | BASIN: handwash, accessible |
| HYDR-004 | DRAIN: floor waste |
| HYTP-035 | TAPWARE: mixer, basin, accessible |
| HYWC-001 | TOILET SUITE: accessible |
| ITCL-004 | BUTTON: nurse call, emergency |
| ITCL-006 | BUTTON: nurse call, patient to staff |
| ITCL-008 | BUTTON: nurse call, staff assist |
| WLWA-004 | WALL FINISH: paint, acrylic, washable |
| WLWA-007 | WALL FINISH: splashback |



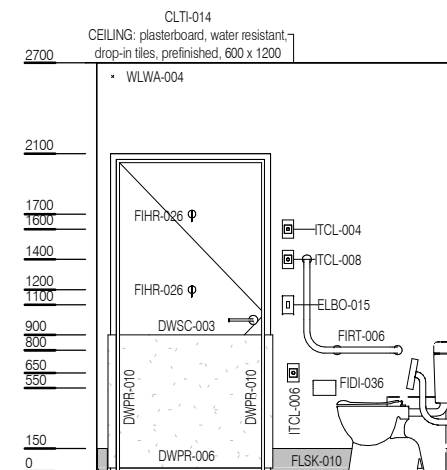
PLAN



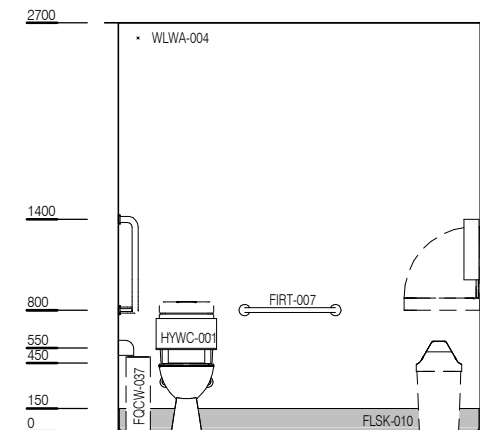
ELEVATION 1



ELEVATION 2



ELEVATION 3



ELEVATION 4



| REV | DESCRIPTION | DATE |
|-----|---------------------------|------------|
| 6 | Coding and naming updated | 20.03.2017 |

FOR GUIDANCE

| SCALE | RLS Room Code | REV |
|-------------|---------------|-----|
| 1 : 50 @ A3 | WCAC | 6 |