

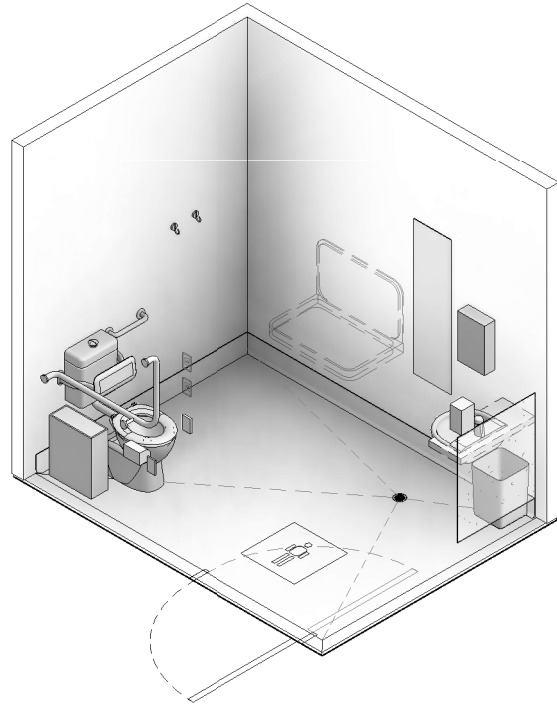
# AUSTRALASIAN HFG STANDARD COMPONENTS

Room Layout Sheet

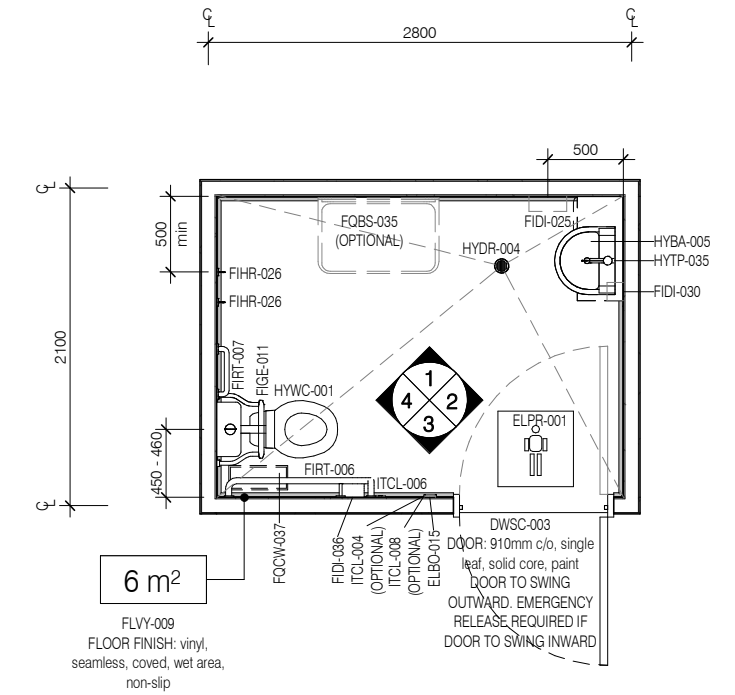
RLS Room Code: WCAC

Room Name:

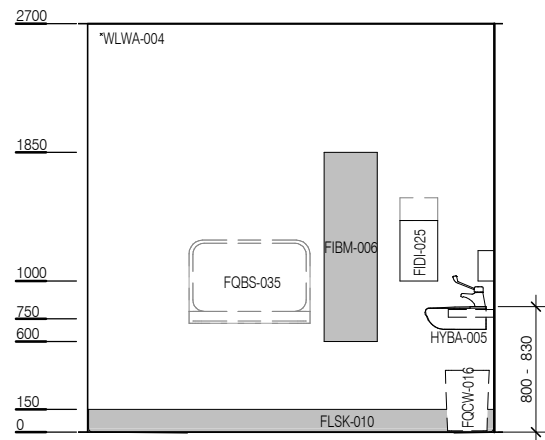
TOILET - ACCESSIBLE



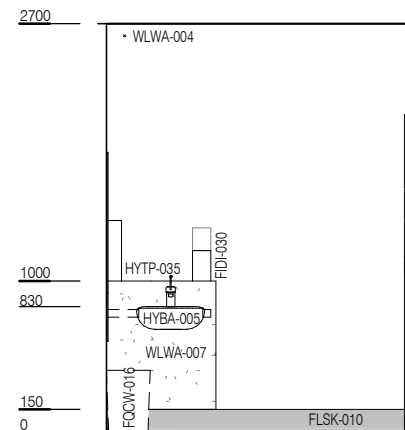
CODE	DESCRIPTION
DWPR-005	DOOR PROTECTION: protection plate to 900 AFFL
ELBO-015	SWITCH: light, single
ELPR-001	BODY PROTECTED ELECTRICAL AREA
FIBM-006	MIRROR: fixed, glass
FIDI-025	DISPENSER: paper/hand towel
FIDI-030	DISPENSER: soap
FIDI-036	DISPENSER: toilet paper
FIGE-011	BACKREST: accessible toilet
FIHR-026	HOOK: coat
FIRT-006	GRAB RAIL: WC
FIRT-007	GRAB RAIL: WC, accessible use
FLSK-010	SKIRTING: vinyl, floor vinyl coved, 150H, prefinished
FLVY-009	FLOOR FINISH: vinyl, seamless, coved, wet area, non-slip
FQBS-035	CHANGE TABLE: baby
FQCW-016	BIN: waste, general, 20L
FQCW-037	BIN: waste, sanitary
HYBA-005	BASIN: handwash, accessible
HYDR-004	DRAIN: floor waste
HYTP-035	TAPWARE: mixer, basin, accessible
HYWC-001	TOILET SUITE: accessible
ITCL-004	BUTTON: nurse call, emergency
ITCL-006	BUTTON: nurse call, patient to staff
ITCL-008	BUTTON: nurse call, staff assist
WLWA-004	WALL FINISH: paint, acrylic, washable
WLWA-007	WALL FINISH: splashback



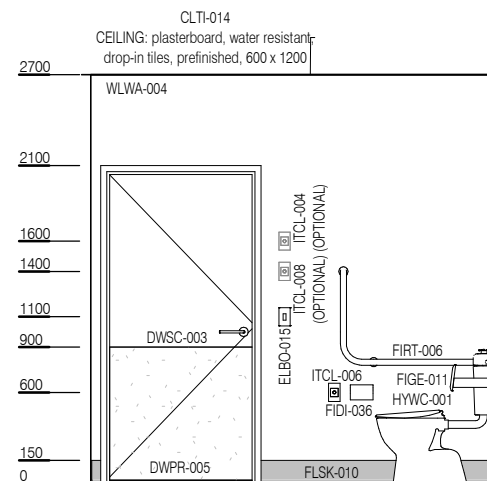
**PLAN**  
RIGHT HANDED PAN  
INDICATED



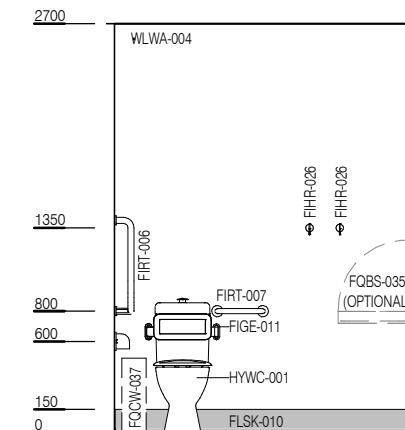
ELEVATION 1



ELEVATION 2



ELEVATION 3



ELEVATION 4



REV	DESCRIPTION	DATE
7	General update following ERG review	18.01.2021

**FOR GUIDANCE**

SCALE	RLS Room Code	REV
1 : 50 @ A3	WCAC	7