

AUSTRALASIAN HFG STANDARD COMPONENTS

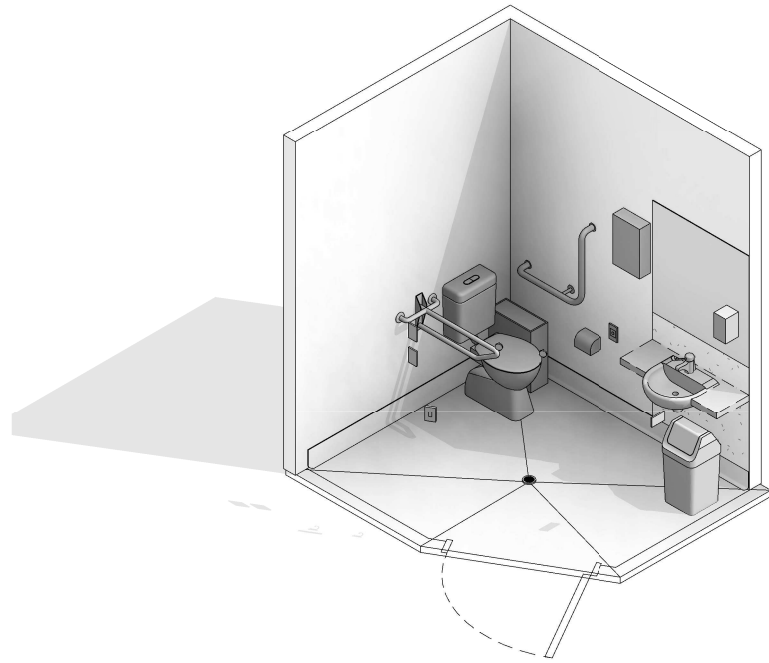
Room Layout Sheet

RLS Room Code: **WCPT**

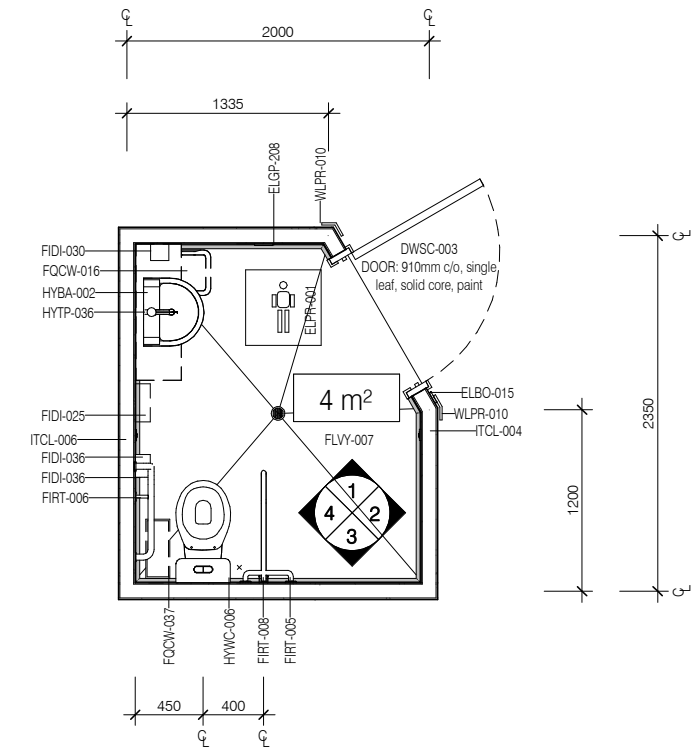
Room Name:

1:50 2.5m 2 1.5 1 0.5 0

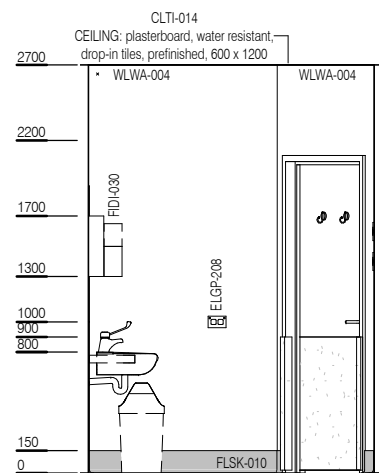
TOILET - PATIENT, 4m²



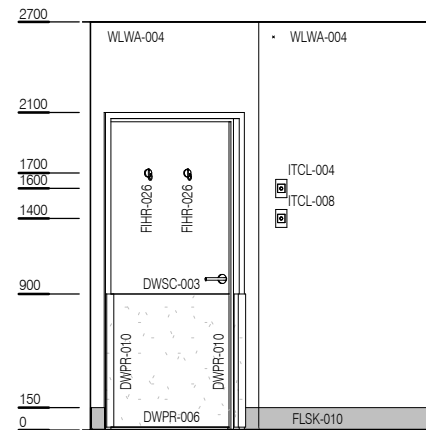
CODE	DESCRIPTION
DWPR-006	DOOR PROTECTION: protection plate, to 900 AFFL, PVC, prefinished
DWPR-010	DOOR PROTECTION: to door frame, PVC, prefinished
ELGP-208	GPO: double, wall mounted
ELPR-001	BODY PROTECTED ELECTRICAL AREA
FIBM-006	MIRROR: fixed, glass
FIDI-025	DISPENSER: paper/hand towel
FIDI-030	DISPENSER: soap
FIDI-036	DISPENSER: toilet paper
FIHR-026	HOOK: coat
FIRT-005	GRAB RAIL: stainless steel
FIRT-006	GRAB RAIL: WC
FIRT-008	GRAB RAIL: WC, hinged
FLSK-010	SKIRTING: vinyl, floor vinyl coved, 150H, prefinished
FLVY-007	FLOOR FINISH: vinyl, seamless, coved, standard slip resistant
FQCW-016	BIN: waste, general, 20L
FQCW-037	BIN: waste, sanitary
HYBA-002	BASIN: ensuite, with vanity unit
HYDR-004	DRAIN: floor waste
HYTP-036	TAPWARE: mixer, basin, lever action
HYWC-006	TOILET SUITE: patient
WLWA-004	WALL FINISH: paint, acrylic, washable
WLWA-007	WALL FINISH: splashback



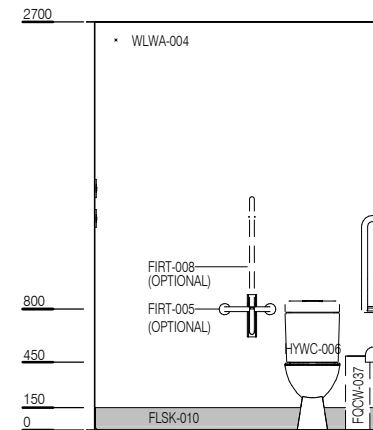
PLAN



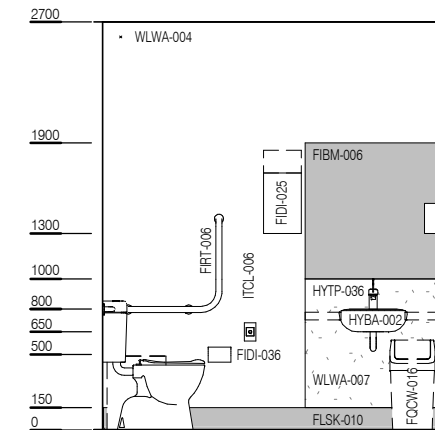
ELEVATION 1



ELEVATION 2



ELEVATION 3



ELEVATION 4



REV	DESCRIPTION	DATE
9	Coding and naming updated	20.03.2017

FOR GUIDANCE

SCALE	RLS Room Code	REV
1 : 50 @ A3	WCPT	9